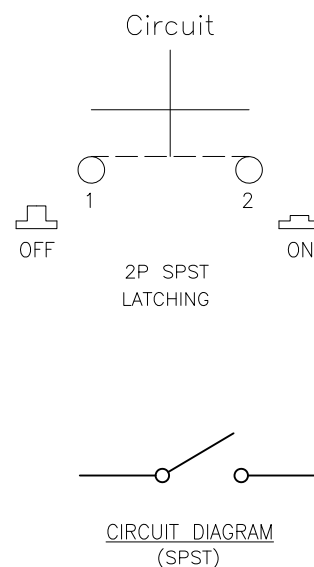
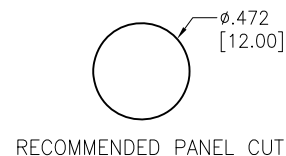
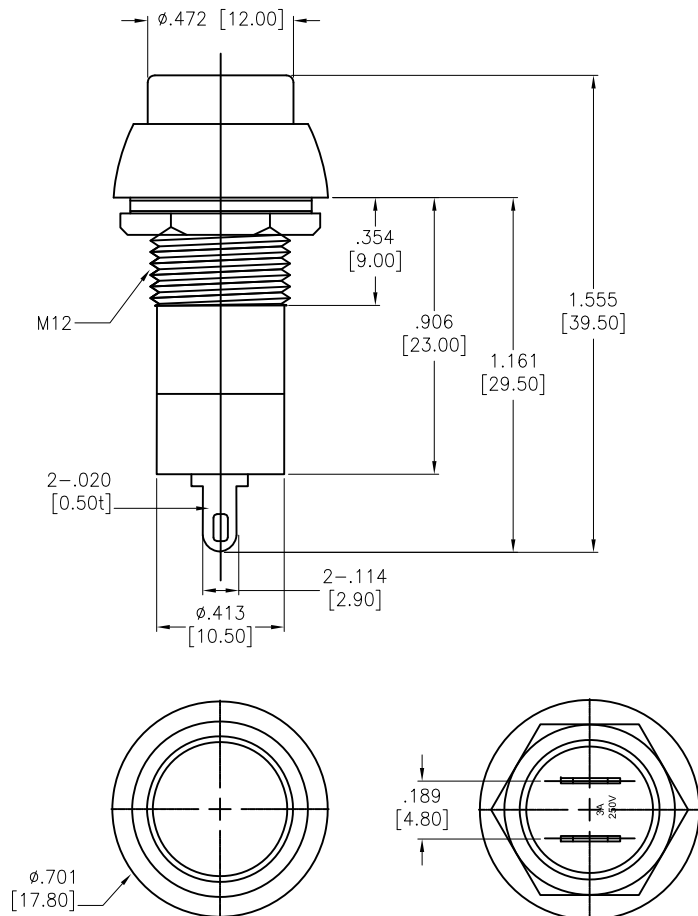


APPROVED: _____
DATE: _____ TITLE: _____

Rev	AWO #	Description	Date	Appr
-		RELEASED	11/25/20	
A		ADDED SPEC.	5/19/21	LH/RC



SW-PB1-1XX-A-P1-X

NO.	Button Color
A	Black
B	Blue
C	Green
D	Red
E	White
F	Yellow

SPECIFICATIONS:

Material:

Housing: ABS, rated UL 94V-0

Bottom: PA66

Button: ABS

Contact: Brass, Silver plated

Spring: Spring steel wire

Electrical:

Rating: 3A, 250VAC

Contact resistance: 50 m Ω max

Insulation resistance: 100 Mohms min (500VDC)

Dielectric withstanding voltage: 1500 VAC for 1 minute

Electrical life: 10,000 Cycles min

Temperature Rating:

Operating temperature: -25°C to +85°C

Environmental:

Lead free, RoHS compliant



UNLESS OTHERWISE SPECIFIED ALL DIMENSIONS ARE INCHES [MM]. TOLERANCES: EXCEPT AS NOTED

INCHES	HOLES
.X $\pm .10$	ϕ .X $\pm .10$
.XX $\pm .020$	ϕ .XX $\pm .015$
.XXX $\pm .015$	ϕ .XXX $\pm .010$

DRAWN	OW	11/25/20
CHECKED	AC	11/25/20
APPROVED		

THIS DRAWING CONTAINS INFORMATION THAT IS PROPRIETARY AND SHOULD NOT BE USED WITHOUT PRIOR WRITTEN PERMISSION FROM ADAM TECH

SW-PB1-1XX-A-P1-X

DZ= ON-OFF Latching
BS= OFF-ON Momentary

ADAM
TECH

909 Rahway Avenue,
Union, NJ 07083
Phone: 908-687-5000
Fax: 908-687-5710

TITLE
SWITCH, PLASTIC PUSH BUTTON, SPST
SOLDER TYPE

SIZE X	PART NO. SW-PB1-1XX-A-P1-X	REV. -
REF: S00204C	SCALE: NTS	SHEET 1 OF 1

Mouser Electronics

Authorized Distributor

Click to View Pricing, Inventory, Delivery & Lifecycle Information:

[Adam Tech:](#)

[SW-PB1-1DZ-A-P1-A](#)