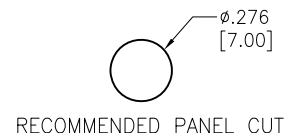
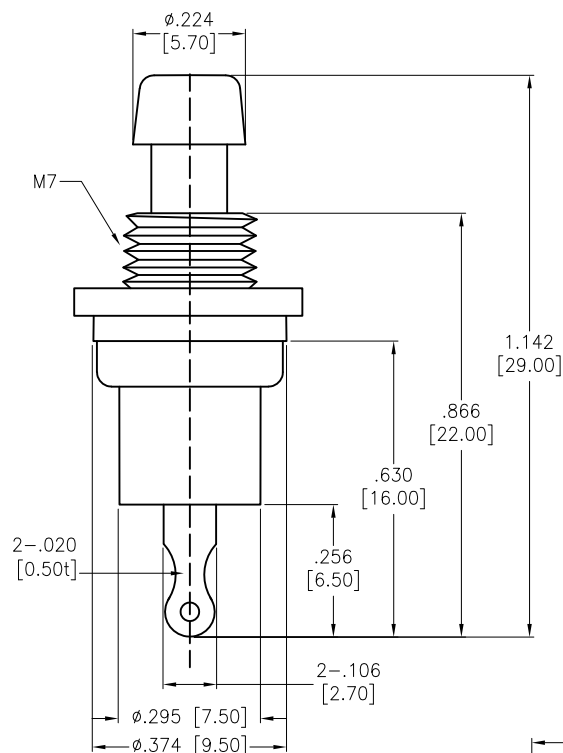
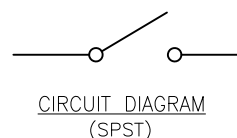
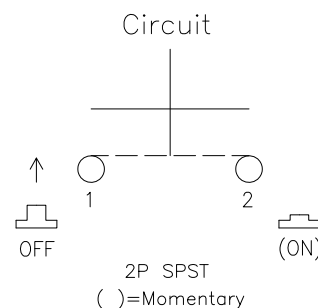


APPROVED: _____
DATE: _____ TITLE: _____

Rev	AWO #	Description	Date	Appr
-		RELEASED	11/23/20	
A		ADDED SPEC.	5/19/21	LH/RC



RECOMMENDED PANEL CUT



SW-PB1-1BS-A-PK1-X

NO.	Button Color
A	Black
B	Blue
C	Green
D	Red
E	White
F	Yellow

SPECIFICATIONS:

Material:

Housing: Brass, Nickel plated

Bottom: PBT

Button: POM

Contact: Brass, Silver plated

Spring: Spring steel wire

Electrical:

Rating: 0.5A, 250VAC

Contact resistance: 50 mΩ max

Insulation resistance: 100 Mohms min (500VDC)

Dielectric withstanding voltage: 1500 VAC for 1 minute

Electrical life: 10,000 Cycles min

Temperature Rating:

Operating temperature: -25°C to +85°C

Environmental:

Lead free, RoHS compliant



UNLESS OTHERWISE SPECIFIED ALL DIMENSIONS ARE INCHES [MM]. TOLERANCES: EXCEPT AS NOTED

INCHES	HOLES
.X ±.10	ØX ±.10
.XX ±.020	ØXX ±.015
.XXX ±.015	ØXXX ±.010

DRAWN	OW	11/23/20
CHECKED	AC	11/23/20
APPROVED		

THIS DRAWING CONTAINS INFORMATION THAT IS PROPRIETARY AND SHOULD NOT BE USED WITHOUT PRIOR WRITTEN PERMISSION FROM ADAM TECH

ADAM
TECH

909 Rahway Avenue,
Union, NJ 07083
Phone: 908-687-5000
Fax: 908-687-5710

TITLE SWITCH, PLASTIC PUSH BUTTON, SPST
OFF-MOMENTRAY, SOLDER TYPE

SIZE X	PART NO. SW-PB1-1BS-A-PK1-X	REV. -
REF: 800204C	SCALE: NTS	SHEET 1 OF 1

Mouser Electronics

Authorized Distributor

Click to View Pricing, Inventory, Delivery & Lifecycle Information:

[Adam Tech:](#)

[SW-PB1-1BS-A-PK1-A](#)