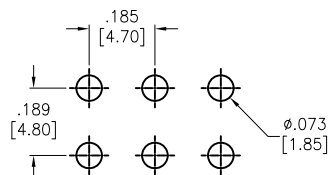
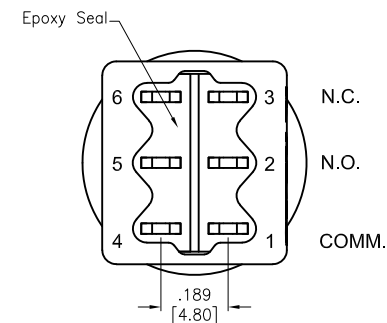
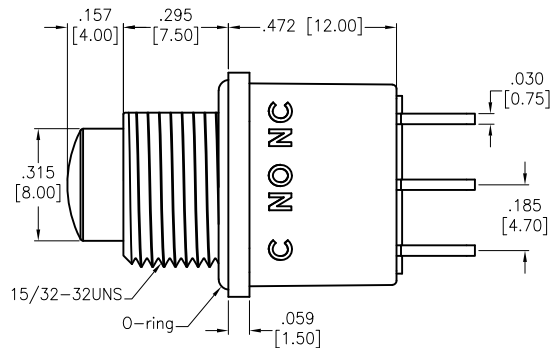
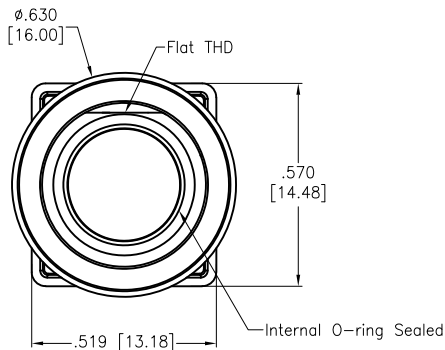
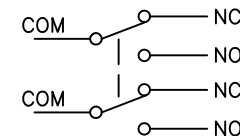
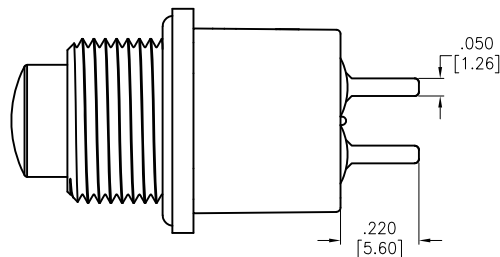


APPROVED: _____
DATE: _____ TITLE: _____

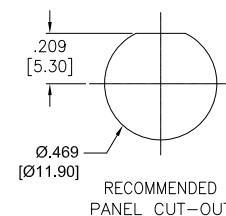
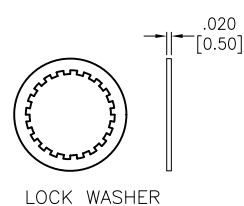
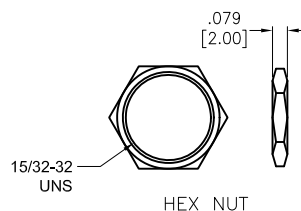
| Rev | AWO # | Description | Date | Appr |
|-----|-------|-------------|---------|------|
| - | | RELEASED | 2/20/21 | |



RECOMMENDED PCB LAYOUT



CIRCUIT DIAGRAM
(DPDT) ON-MOMENTARY



SPECIFICATIONS:

Material:

Movable Contact: Copper Alloy, Silver Plated

Terminal: Copper Alloy, Silver Plated

Bushing&Plunger: Brass, Nickel Plated, Color: Black

Electrical:

Voltage rating: 120VAC or 38VDC

Current rating: 1 Amps

Contact resistance: 10 mΩ max

Insulation resistance: 1,000 Mohms min

Dielectric withstanding voltage: 1,500V RMS @Sea level

Mechanical:

Waterproof: IP68

Temperature Rating:

Operating temperature: -30°C to +85°C

Environmental:

Lead free, RoHS compliant



UNLESS OTHERWISE SPECIFIED
ALL DIMENSIONS ARE INCHES [MM]
TOLERANCES: EXCEPT AS NOTED
INCHES HOLES
.X ± .10 Ø.X ± .10
.XX ± .020 Ø.XX ± .015
.XXX ± .015 Ø.XXX ± .010

APPROVALS

| DRAWN | LH | DATE |
|----------|----|---------|
| CHECKED | AC | 2/20/21 |
| APPROVED | | |

ADAM
TECH

909 Rahway Avenue,
Union, NJ 07083
Phone: 908-687-5000
Fax: 908-687-5710

TITLE
SEALED PUSHBUTTON SWITCH, WATERPROOF-IP68
DPDT, ON-MOMENTARY, SILVER PLATED, PCB TYPE

| SIZE | PART NO. | REV. |
|-------|------------------|------------|
| X | SW-PB10-DBB2QE-4 | - |
| REF: | S00198T | SCALE: NTS |
| SHEET | 1 | OF 1 |

Mouser Electronics

Authorized Distributor

Click to View Pricing, Inventory, Delivery & Lifecycle Information:

[Adam Tech:](#)

[SW-PB10-DBB2QE-4](#)