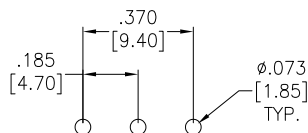
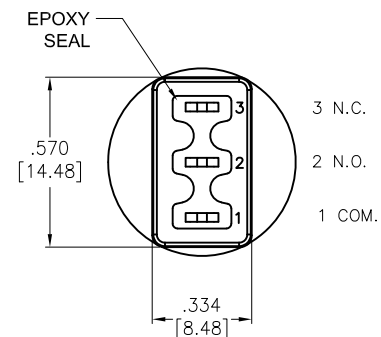
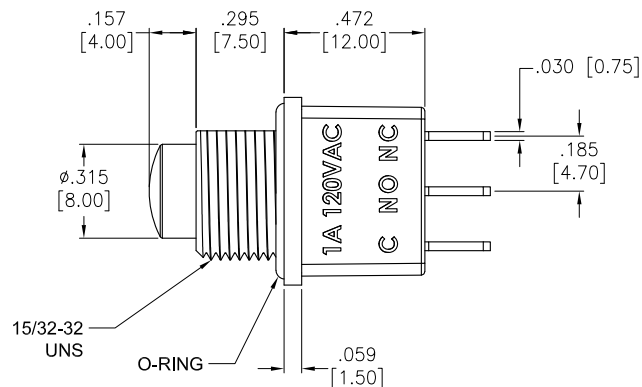
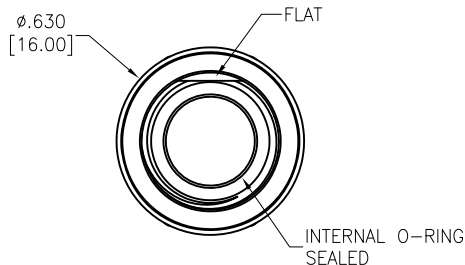
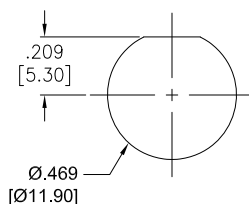


APPROVED: _____
DATE: _____ TITLE: _____

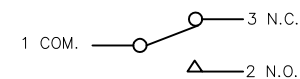
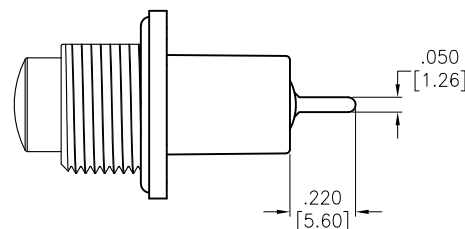
Rev	AWO #	Description	Date	Appr
-		RELEASED	1/26/21	
A		ADDED SPEC.	6/21/21	WX/RC



RECOMMENDED
PCB LAYOUT



RECOMMENDED
PANEL CUT-OUT



CIRCUIT DIAGRAM
(SPDT)

SPECIFICATIONS:

Material:

Case: DAP, Rated UL94V-0

Plunger: Brass, color Black w/ O-Ring

Bushing: Brass, color Black w/ O-Ring

Movable Contact: Copper Alloy, Silver Plated

Terminal: Copper Alloy, Silver Plated

Electrical:

Rating: 1A @ 120VAC or 38V DC

Contact resistance: 10 mΩ max

Insulation resistance: 1,000 Mohms min

Dielectric withstanding voltage: 1,500V RMS @Sea level

Life: 50,000 cycles at full load

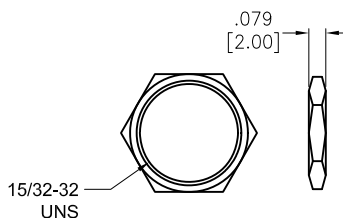
Temperature Rating:

Operating temperature: -30°C to +85°C

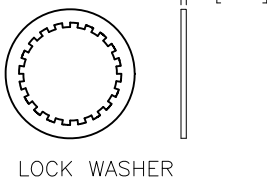
Environmental:

Sealed IP68 Rated

Lead free, RoHS compliant



HEX NUT



LOCK WASHER

BUTTON POSITION		
FUNCTION	ON	MOM
TERMINALS	1-3	1-2

UNLESS OTHERWISE SPECIFIED
ALL DIMENSIONS ARE INCHES [MM]
TOLERANCES: EXCEPT AS NOTED
INCHES HOLES
.X ±.10 Ø.X ±.10
.XX ±.020 Ø.XX ±.015
.XXX ±.015 Ø.XXX ±.010

APPROVALS		DATE
DRAWN	LH	1/26/21
CHECKED	AC	1/26/21
APPROVED		

ADAM
TECH

909 Rahway Avenue,
Union, NJ 07083
Phone: 908-687-5000
Fax: 908-687-5710

TITLE
HIGH PERFORMANCE PUSH BUTTON SWITCH,
SPDT, ON-MOM, SILVER PLATED, PCB TAILS

SIZE	PART NO.	REV.
X	SW-PB10-CBB2QE-4	A
REF:	S00198T	SCALE: NTS
SHEET 1 OF 1		

Mouser Electronics

Authorized Distributor

Click to View Pricing, Inventory, Delivery & Lifecycle Information:

[Adam Tech:](#)

[SW-PB10-CBB2QE-4](#)