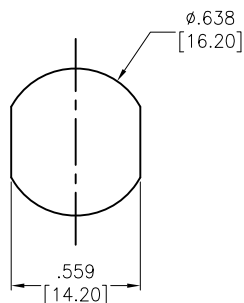
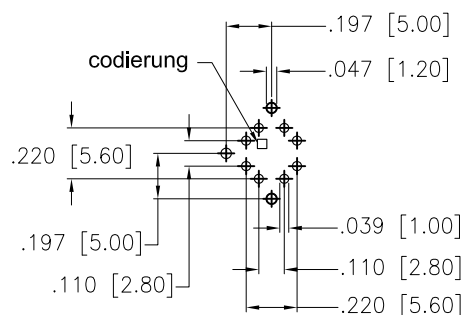


APPROVED: \_\_\_\_\_  
DATE: \_\_\_\_\_ TITLE: \_\_\_\_\_

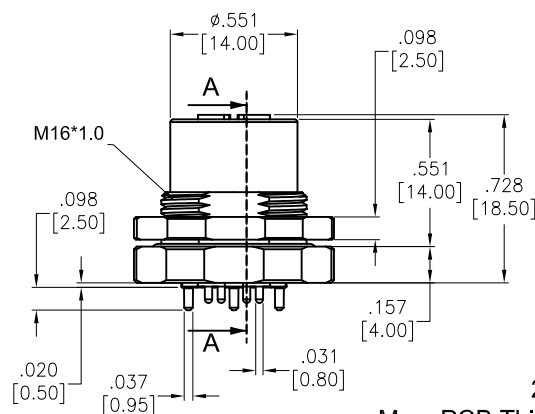
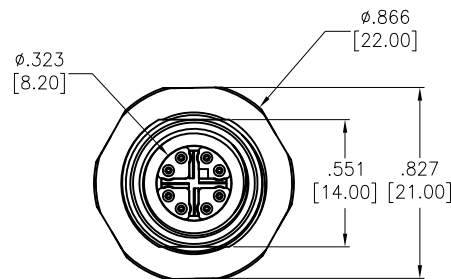
Rev	AWO #	Description	Date	Appr
-		RELEASED	3/5/18	
A		UPDATE DRAWING	5/8/19	AY/KC



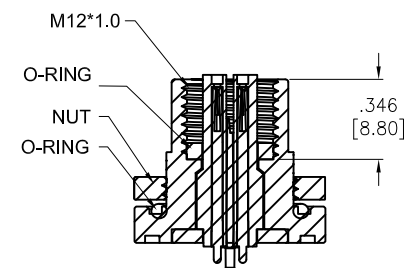
RECOMMENDED PANEL CUT



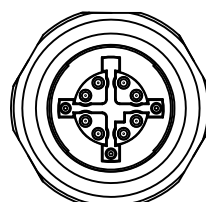
RECOMMENDED PCB LAYOUT



2.3 mm  
Max. PCB Thickness



SECTION A-A



SD-MMX08-FFTPH-PX0-001  
7=IP67

SHELL	COPPER ALLOY, NICKEL PLATED	
METAL PARTS	COPPER ALLOY	
CONTACT	COPPER ALLOY, CONTACT AREA: 30u" GOLD	
INSULATOR	THERMOSETTING POLYMER	BLACK
PART NAME	DESCRIPTION	COLOR

SPECIFICATIONS:

Electrical:

Operation voltage: 48 VAC (RMS)

Current rating: 0.5 Amp max

Contact resistance: 5 mohms max

Insulation resistance: 100 Mohms min @ 500 VDC

Dielectric withstanding voltage: 500 VAC for 1 minute

Temperature Rating:

-25°C to +85°C

Environmental:

Lead free, RoHS compliant.



UNLESS OTHERWISE SPECIFIED  
ALL DIMENSIONS ARE INCHES [MM]  
TOLERANCES: EXCEPT AS NOTED

INCHES	HOLES
.X ± .10	Ø.X ± .10
.XX ± .020	Ø.XX ± .015
.XXX ± .015	Ø.XXX ± .010

APPROVALS		DATE
DRAWN	AY	3/5/18
CHECKED	KC	3/5/18
APPROVED		

**ADAM**  
**TECH**  
**INTERCONNECTS**

909 Rahway Avenue,  
Union, NJ 07083  
Phone: 908-687-5000  
Fax: 908-687-5710

TITLE  
WATERPROOF CONNECTOR, FEMALE, M12  
STRAIGHT PCB TYPE, X CODING

SIZE X	PART NO. SD-MMX08-FFTPH-PX0-001	REV. A
REF: S00013T	SCALE: NTS	SHEET 1 OF 1

# Mouser Electronics

Authorized Distributor

Click to View Pricing, Inventory, Delivery & Lifecycle Information:

[Adam Tech:](#)

[SD-MMX08-FFTPH-PX0-001](#)