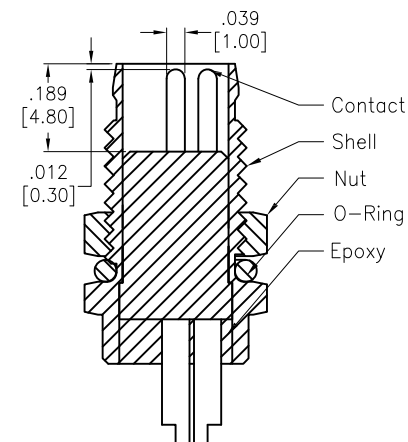
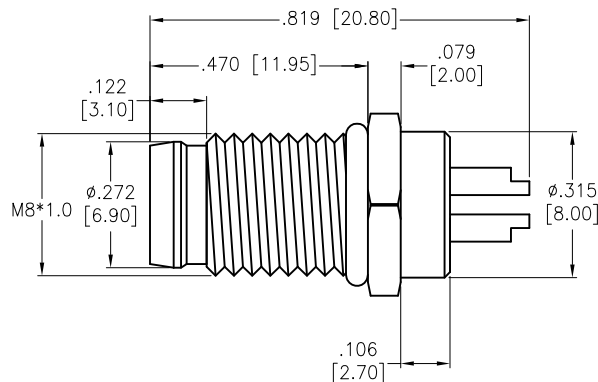
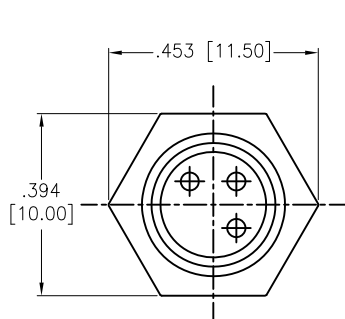
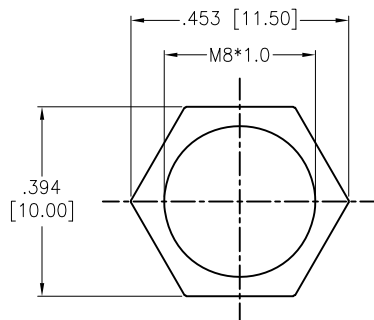


APPROVED: \_\_\_\_\_  
DATE: \_\_\_\_\_ TITLE: \_\_\_\_\_

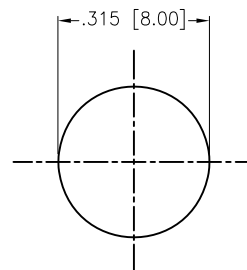
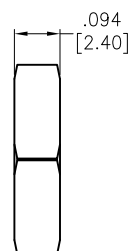
Rev	AWO #	Description	Date	Appr
-		RELEASED	10/19/16	
A		REDRAWN AND UPDATED	10/2/23	



SD-MMEXXX-MMTPH-SX0-000  
7=IP67



Nut



RECOMMENDED PANEL CUT

SD-MMEXXX-MMTPH-SX0-000

HOUSING	PBT	BLACK
NUT	BRASS, NICKEL PLATED	
O-RING	NBR	BLACK
CONTACT	BRASS, 10u" GOLD PLATED	
SHELL	BRASS, NICKEL PLATED	
PART NAME	DESCRIPTION	COLOR

SPECIFICATIONS:

Electrical:

Voltage rating: 60V

Current rating: 4A

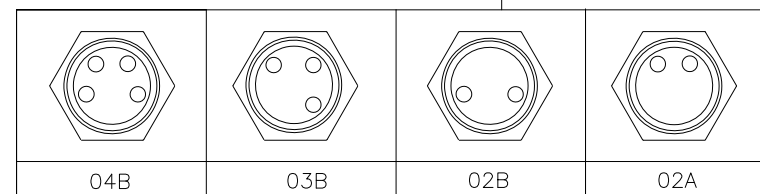
Temperature Rating:

Operating temperature: -20°C to +85°C

Environmental:

Waterproof: IP67

Lead free, RoHS compliant.



UNLESS OTHERWISE SPECIFIED ALL DIMENSIONS  
ARE INCHES [MM]. TOLERANCES: EXCEPT AS NOTED

INCHES	HOLES
.X ± .10	ØX ± .10
.XX ± .020	ØXX ± .015
.XXX ± .015	ØXXX ± .010

DRAWN	HR	10/19/16
CHECKED	CK	10/19/16
APPROVED		

THIS DRAWING CONTAINS INFORMATION THAT IS PROPRIETARY  
AND SHOULD NOT BE USED WITHOUT PRIOR WRITTEN  
PERMISSION FROM ADAM TECH

**ADAM**  
**TECH**

909 Rahway Avenue,  
Union, NJ 07083  
Phone: 908-687-5000  
Fax: 908-687-5710

TITLE WATERPROOF CONNECTOR, MALE, M8  
SCREW MOUNT, SOLDER TYPE, 2 THRU 4 PIN

SIZE X	PART NO. SD-MMEXXX-MMTPH-SX0-000	REV. A
REF: S00298T	SCALE: NTS	SHEET 1 OF 2

6

5

4

3

2

1

APPROVED: \_\_\_\_\_

DATE: \_\_\_\_\_ TITLE: \_\_\_\_\_

Rev

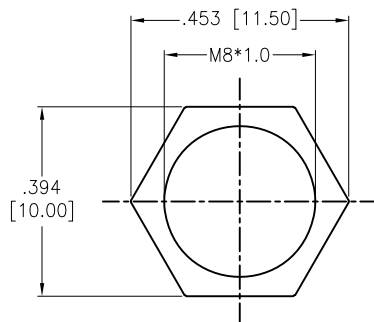
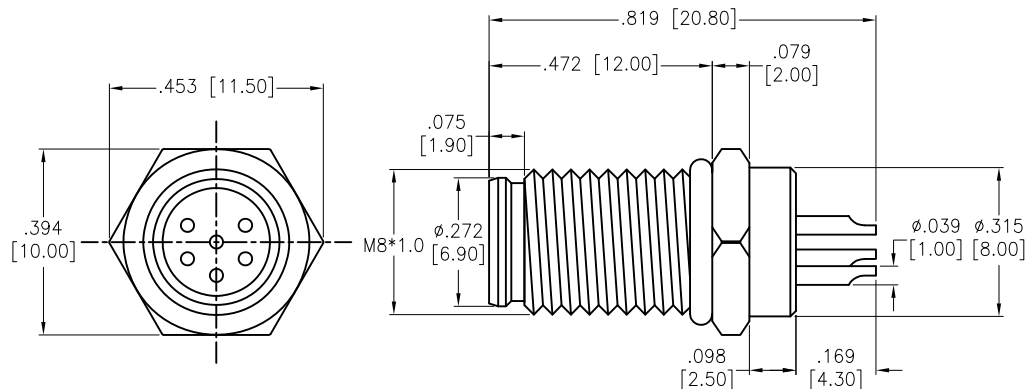
AWO #

Description

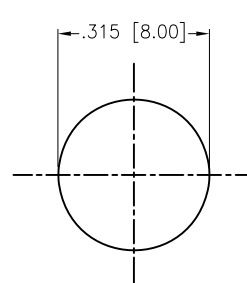
Date

Appr

SEE SHT 1 OF 2 FOR REVISION



Nut

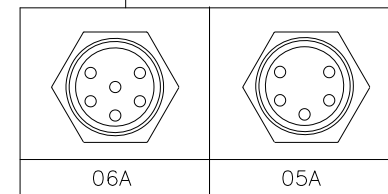


RECOMMENDED PANEL CUT

SD-MMEXXX-MMTPH-SX0-000

7=IP67

SD-MMEXXX-MMTPH-SX0-000



HOUSING	PBT	BLACK
NUT	BRASS, NICKEL PLATED	
O-RING	NBR	BLACK
CONTACT	BRASS, 10u" GOLD PLATED	
SHELL	BRASS, NICKEL PLATED	
PART NAME	DESCRIPTION	COLOR

## SPECIFICATIONS:

## Electrical:

Voltage rating: 60V

Current rating: 1A

Temperature Rating:

Operating temperature: -40°C to +105°C

## Environmental:

Waterproof: IP67

Lead free, RoHS compliant.

UNLESS OTHERWISE SPECIFIED ALL DIMENSIONS  
ARE INCHES [MM]. TOLERANCES: EXCEPT AS NOTED

INCHES	HOLES
.X ± .10	ØX ± .10
.XX ± .020	ØXX ± .015
.XXX ± .015	ØXXX ± .010

DRAWN HR 10/19/16

CHECKED CK 10/19/16

APPROVED

THIS DRAWING CONTAINS INFORMATION THAT IS PROPRIETARY  
AND SHOULD NOT BE USED WITHOUT PRIOR WRITTEN  
PERMISSION FROM ADAM TECH**ADAM**  
**TECH**909 Rahway Avenue,  
Union, NJ 07083  
Phone: 908-687-5000  
Fax: 908-687-5710TITLE WATERPROOF CONNECTOR, MALE, M8  
SCREW MOUNT, SOLDER TYPE, 5 AND 6 PIN

SIZE X PART NO. SD-MMEXXX-MMTPH-SX0-000 REV. A

REF: S00298T SCALE: NTS SHEET 2 OF 2

6

5

4

3

2

1

# Mouser Electronics

Authorized Distributor

Click to View Pricing, Inventory, Delivery & Lifecycle Information:

[Adam Tech:](#)

[SD-MME03B-MMTPH-S70-000](#) [SD-MME06A-MMTPH-S70-000](#) [SD-MME02B-MMTPH-S70-000](#) [SD-MME05A-MMTPH-S70-000](#) [SD-MME04B-MMTPH-S70-000](#)