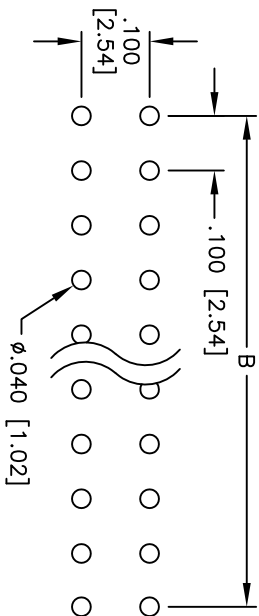
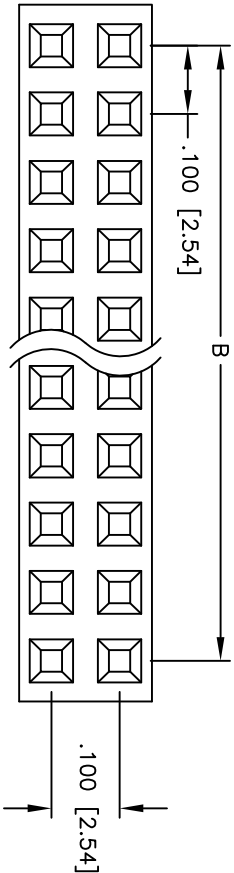


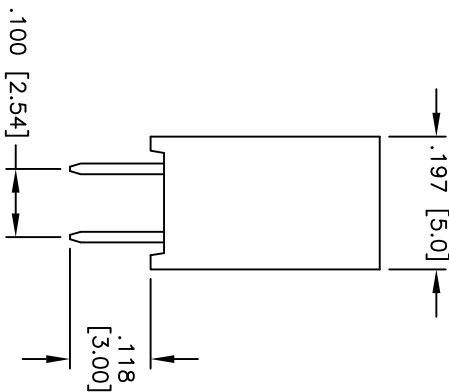
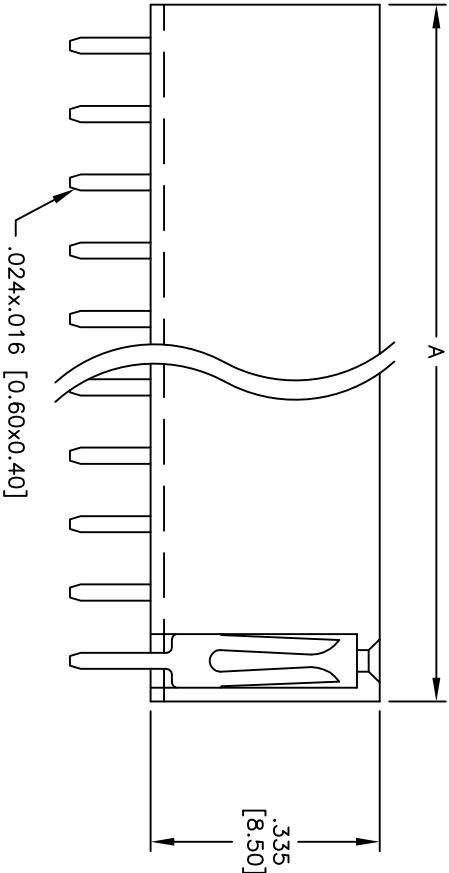
Rev	AWO #	Description	Date	Appr
-		RELEASED	5/31/05	

APPROVED: _____

DATE: _____ TITLE: _____



RECOMMENDED
PCB LAYOUT



SPECIFICATIONS:

Material: Insulator: PBT, glass reinforced, rated UL 94V-0
Insulator color: Black
Contacts: Brass
Plating: Gold flash over Nickel underplate overall
Electrical: Operating voltage: 250 VAC max.
Current rating: 3 Amps max.
Contact resistance: 20 mohms max. initial
Insulation resistance: 5,000 Mohms min.
Dielectric withstanding voltage: 1,000 VAC for 1 minute
Temperature Rating: Operating temperature: -40°C to +105°C
Environmental: Lead free, RoHS compliant

Positions: 02 thru 80
A = .100 [2.54] x No. of Positions per Row + .020 [0.50]
B = .100 [2.54] x No. of Spaces

ADAM TECH

909 Rahway Avenue, Union, NJ 07083
Phone: 908-687-5000 Fax: 908-687-5710

TITLE: .100 x .100 DUAL ROW RECEPTACLE STRIP
.335 [8.50] HEIGHT

UNLESS OTHERWISE SPECIFIED ALL DIMENSIONS ARE INCHES [MM] TOLERANCES: EXCEPT AS NOTED				INCHES				Holes			
.X	± .10	ØXX	± .10	.XX	± .020	ØXXX	± .015	.XXX	± .015	ØXXX	± .010
APPROVALS				DATE							
DRAWN				SS				5/31/05			
CHECKED											
APPROVED											
SIZE				PART NO.				REV.			
X				RS2-XX-G				-			
REF:				SCALE: NTS				SHEET 1 OF 1			



Mouser Electronics

Authorized Distributor

Click to View Pricing, Inventory, Delivery & Lifecycle Information:

[Adam Tech:](#)

[RS2-04-G](#) [RS2-20-G](#) [RS2-08-G](#) [RS2-14-G](#) [RS2-18-G](#) [RS2-16-G](#) [RS2-12-G](#) [RS2-50-G](#) [RS2-06-G](#) [RS2-10-G](#)
[RS2-A5-14-G-HT](#)