

6

5

4

3

2

1

APPROVED: _____

DATE: _____ TITLE: _____

Rev

AWO #

Description

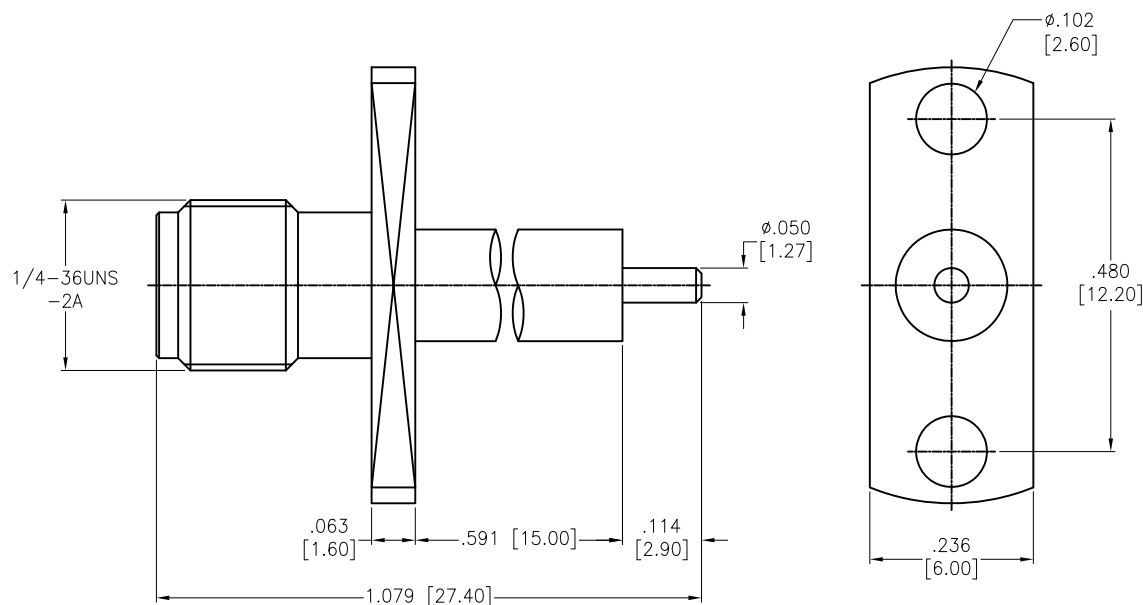
Date

Appr

-

RELEASED

7/20/16



INSULATOR	PTFE	WHITE
CONTACT PIN	BRASS	GOLD
INSULATOR	PTFE	WHITE
BODY	BRASS	GOLD
DESCRIPTION	MATERIAL	FINISH

SPECIFICATIONS:

Electrical:

Nominal Impedance: 50 ohms

Frequency range: DC-18 GHz

Working voltage: 335 VOLTS max.

Proof voltage: 1,000 VOLTS

Temperature Rating:

Operating temperature: -65°C to +165°C

Environmental:

Lead free, RoHS compliant.



UNLESS OTHERWISE SPECIFIED
ALL DIMENSIONS ARE INCHES [MM]
TOLERANCES: EXCEPT AS NOTED
INCHES HOLES

.X ± .10 Ø.X ± .10
.XX ± .020 Ø.XX ± .015
.XXX ± .015 Ø.XXX ± .010

APPROVALS

DATE

DRAWN

AY

7/20/16

CHECKED

SY

7/20/16

APPROVED

ADAM TECH

909 Rahway Avenue, Union, NJ 07083

Phone: 908-687-5000 Fax: 908-687-5710

TITLE

RF CONNECTOR, SMA STR 2 HOLES
PANEL RECEPT JACK

SIZE

X

PART NO.

RF2-156-T-00-50-G

REV.

-

REF: S00277T

SCALE: NTS

SHEET 1 OF 1

Mouser Electronics

Authorized Distributor

Click to View Pricing, Inventory, Delivery & Lifecycle Information:

[Adam Tech:](#)

[RF2-156-T-00-50-G](#)