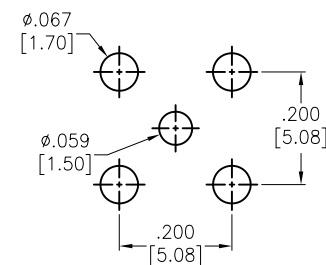
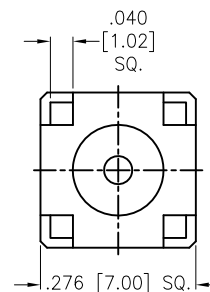
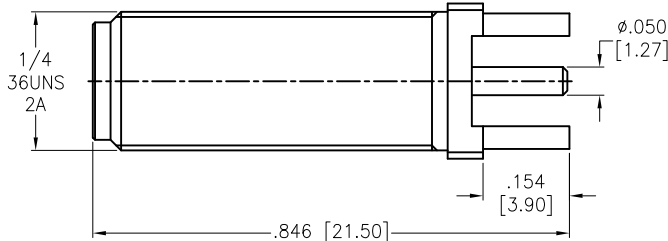
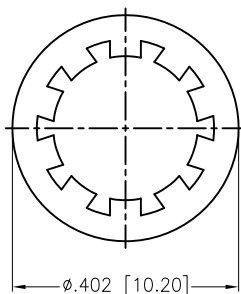
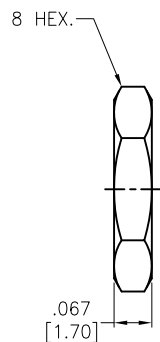


6 5 4 3 2 1

APPROVED: \_\_\_\_\_

DATE: \_\_\_\_\_ TITLE: \_\_\_\_\_

Rev	AWO #	Description	Date	Appr
-		RELEASED	4/20/16	



RECOMMENDED PCB LAYOUT

HEX NUT	BRASS	GOLD
WASHER	STEEL	GOLD
CONTACT PIN	BRASS	GOLD
INSULATOR	PTFE	WHITE
BARREL	BRASS	GOLD
DESCRIPTION	MATERIAL	FINISH

**SPECIFICATIONS:**

**Electrical:**

Nominal Impedance: 50 ohms  
Frequency range: DC 0–18 GHz  
Working voltage: 335 Volts max  
Proof voltage: 1000 Volts  
Temperature Rating:  
Operating temperature: –65°C to +165°C  
**Environmental:**  
Lead free, RoHS compliant.



UNLESS OTHERWISE SPECIFIED ALL DIMENSIONS ARE INCHES [MM] TOLERANCES: EXCEPT AS NOTED INCHES HOLES .X ± .10 Ø.X ± .10 .XX ± .020 Ø.XX ± .015 .XXX ± .015 Ø.XXX ± .010		<b>ADAM TECH</b> 909 Rahway Avenue, Union, NJ 07083 Phone: 908-687-5000 Fax: 908-687-5710	
		TITLE SMA JACK EDGE CARD MOUNT PCB, STRAIGHT	
APPROVALS	DATE	SIZE	PART NO.
DRAWN	HR	X	RF2-152-T-00-50-G-HDW
CHECKED	MW		
APPROVED			
		REF: S00277T	SCALE: NTS
		SHEET 1 OF 1	

# Mouser Electronics

Authorized Distributor

Click to View Pricing, Inventory, Delivery & Lifecycle Information:

[Adam Tech:](#)

[RF2-152-T-00-50-G-HDW](#)