

6

5

4

3

2

1

APPROVED: _____

DATE: _____ TITLE: _____

Rev

AWO #

Description

Date

Appr

-

RELEASED

7/20/16

D

D

C

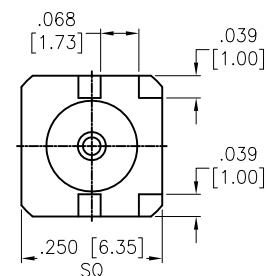
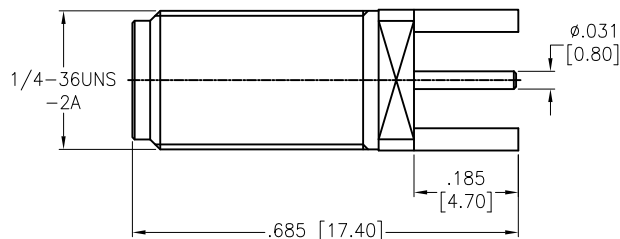
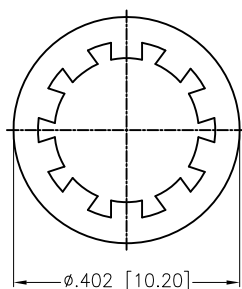
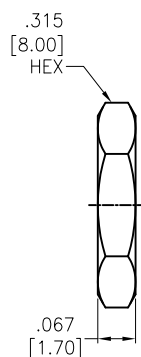
C

B

B

A

A



HEX NUT	BRASS	GOLD
WASHER	S50C	GOLD
CONTACT PIN	BRASS	GOLD
INSULATOR	PTFE	WHITE
BODY	BRASS	GOLD
DESCRIPTION	MATERIAL	FINISH

SPECIFICATIONS:**Electrical:**

Nominal Impedance: 50 ohms
Frequency range: DC 0-18 GHz
Working voltage: 335 VOLTS max
Proof voltage: 1,000 VOLTS
Temperature Rating:
Operating temperature: -65°C to +165°C
Environmental:
Lead free, RoHS compliant.



MAX. BOARD THICKNESS=1.6mm

MAX. PANEL THICKNESS=3.2mm

UNLESS OTHERWISE SPECIFIED
ALL DIMENSIONS ARE INCHES [MM]
TOLERANCES: EXCEPT AS NOTED
INCHES HOLES
.X ± .10 Ø.X ± .10
.XX ± .020 Ø.XX ± .015
.XXX ± .015 Ø.XXX ± .010

APPROVALS

DATE

DRAWN

AY

7/20/16

CHECKED

SY

7/20/16

APPROVED

ADAM TECH

909 Rahway Avenue, Union, NJ 07083
Phone: 908-687-5000 Fax: 908-687-5710

TITLE

SMA END LAUNCH BULKHEAD JACK

SIZE

X

PART NO.

RF2-145A-T-17-50-G-HDW

REV.

-

REF: S00277T

SCALE: NTS

SHEET 1 OF 1

6

5

4

3

2

1

Mouser Electronics

Authorized Distributor

Click to View Pricing, Inventory, Delivery & Lifecycle Information:

[Adam Tech:](#)

[RF2-145A-T-17-50-G-HDW](#)