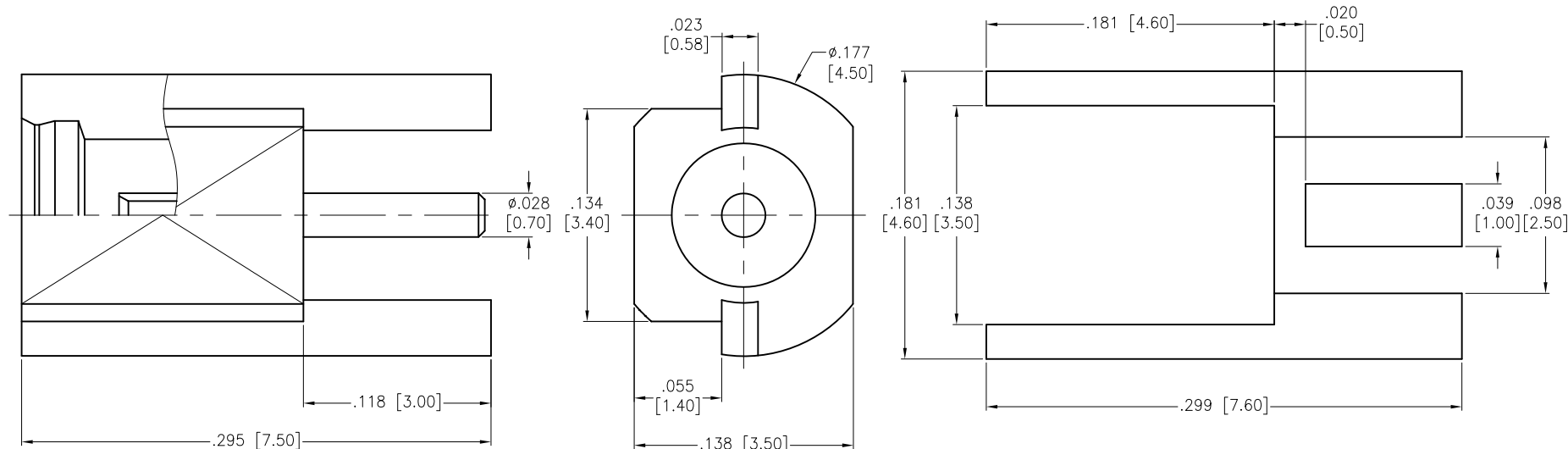


6 5 4 3 2 1

APPROVED: _____
DATE: _____ TITLE: _____

Rev	AWO #	Description	Date	Appr
-		RELEASED	9/12/16	



RECOMMENDED PCB LAYOUT

CONTACT PIN	BE CU	GOLD
INSULATOR	PTFE	WHITE
BODY	BRASS	GOLD
DESCRIPTION	MATERIAL	FINISH

SPECIFICATIONS:

Electrical:

Nominal Impedance: 50 ohms

Frequency range: 0–6 GHz

Working Voltage: 170 VOLTS Max

Proof Voltage: 500 VOLTS

Temperature Rating:

Operating temperature: –55°C to +155°C

Environmental:

Lead free, RoHS compliant.



UNLESS OTHERWISE SPECIFIED ALL DIMENSIONS ARE INCHES [MM] TOLERANCES: EXCEPT AS NOTED INCHES HOLES .X ± .10 Ø.X ± .10 .XX ± .020 Ø.XX ± .015 .XXX ± .015 Ø.XXX ± .010			ADAM TECH 909 Rahway Avenue, Union, NJ 07083 Phone: 908-687-5000 Fax: 908-687-5710	
APPROVALS			DATE	
DRAWN	AY		9/12/16	
CHECKED	LW		9/12/16	
APPROVED				
TITLE			RF CONNECTOR, TYPE MMCX STR. 50 OHM, EDGE CARD MOUNT JACK	
SIZE X			PART NO. RF12-05A-T-00-50-G	REV. -
REF: S00277T			SCALE: NTS	SHEET 1 OF 1

Mouser Electronics

Authorized Distributor

Click to View Pricing, Inventory, Delivery & Lifecycle Information:

[Adam Tech:](#)

[RF12-05A-T-00-50-G](#)