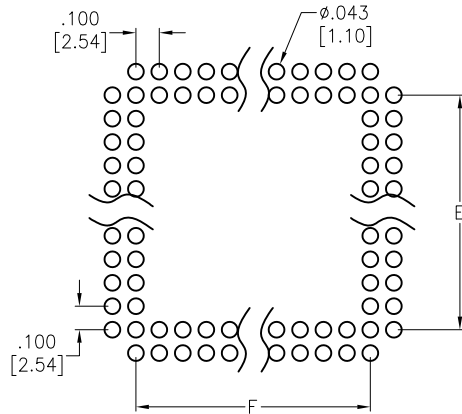
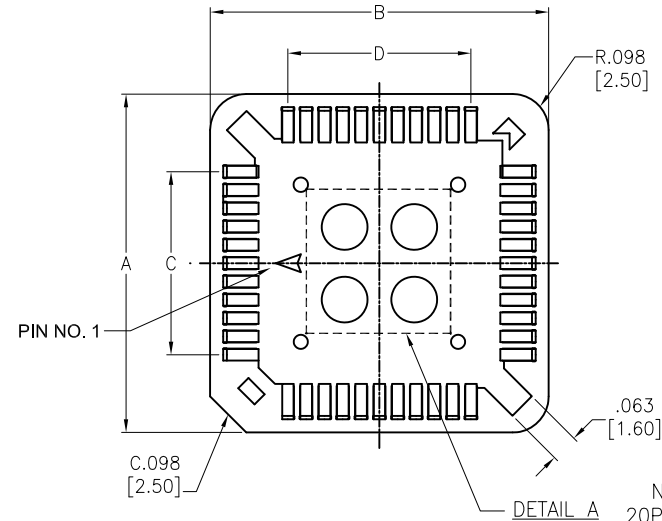
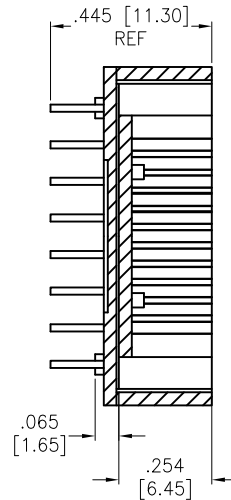


APPROVED: \_\_\_\_\_  
DATE: \_\_\_\_\_ TITLE: \_\_\_\_\_

Rev	AWO #	Description	Date	Appr
-		RELEASED	11/8/04	
A		ADDED PLATING THICKNESS	01/07/14	
B		UPDATE DRAWING	2/25/20	LH/RC
C		ADDED SHT 2 PINOUT	12/28/22	SS



RECOMMENDED PCB LAYOUT



NOTE: DETAIL A  
20P-32P ONE HOLE  
44P-84P FOUR HOLE

POSITIONS	A		B		C		D		E		F	
	INCHES	MM	INCHES	MM	INCHES	MM	INCHES	MM	INCHES	MM	INCHES	MM
20	0.610	15.50	0.610	15.50	0.200	5.08	0.200	5.08	0.200	5.08	0.200	5.08
28	0.710	18.04	0.710	18.04	0.300	7.62	0.300	7.62	0.300	7.62	0.300	7.62
32	0.710	18.04	0.811	20.60	0.300	7.62	0.400	10.16	0.300	7.62	0.400	10.16
44	0.924	23.48	0.924	23.48	0.500	12.70	0.500	12.70	0.500	12.70	0.500	12.70
52	1.018	25.88	1.018	25.88	0.600	15.24	0.600	15.24	0.600	15.24	0.600	15.24
68	1.246	31.66	1.246	31.66	0.800	20.32	0.800	20.32	0.800	20.32	0.800	20.32
84	1.443	36.66	1.443	36.66	1.000	25.40	1.000	25.40	1.000	25.40	1.000	25.40

SPECIFICATIONS:

Material:

Insulator: PBT, glass reinforced, rated UL 94V-0

Insulator color: Black

Contacts: Phosphor Bronze

Plating:

Tin over Nickel underplate overall

Electrical:

Current rating: 1 Amp

Contact resistance: 30 mohms max

Insulation resistance: 1000 Mohms min

Dielectric withstanding voltage: 500 VAC for 1 minute

Temperature Rating:

-50°C to +105°C

Environmental:

Lead free, RoHS compliant.



UNLESS OTHERWISE SPECIFIED  
ALL DIMENSIONS ARE INCHES [MM]  
TOLERANCES: EXCEPT AS NOTED  
INCHES HOLES  
.X ± .10 Ø.X ± .10  
.XX ± .020 Ø.XX ± .015  
.XXX ± .015 Ø.XXX ± .010

APPROVALS

DRAWN

SS

11/8/04

CHECKED

APPROVED

DATE

**ADAM**  
**TECH**  
**INTERCONNECTS**

909 Rahway Avenue,  
Union, NJ 07083  
Phone: 908-687-5000  
Fax: 908-687-5710

TITLE

PLCC SOCKET, 20 ~ 84 POSITION, PCB

SIZE  
X

PART NO.

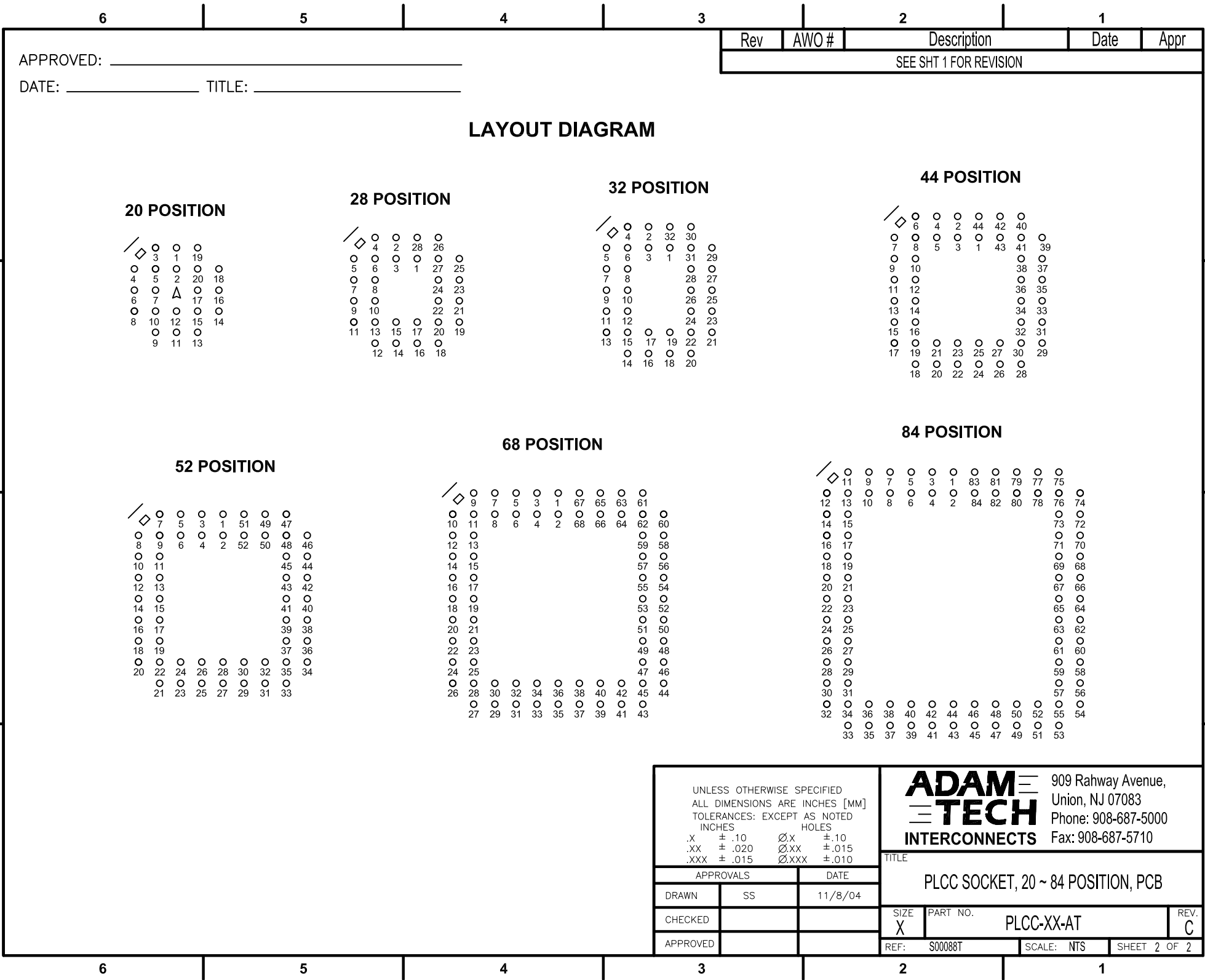
PLCC-XX-AT

REV.  
C

REF: S00088T

SCALE: NTS

SHEET 1 OF 2



# Mouser Electronics

Authorized Distributor

Click to View Pricing, Inventory, Delivery & Lifecycle Information:

[Adam Tech:](#)

[PLCC-52-AT](#)