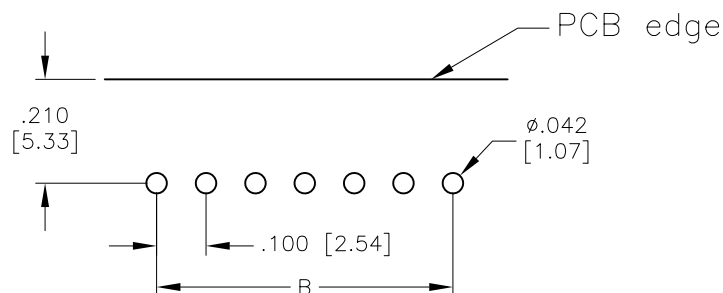
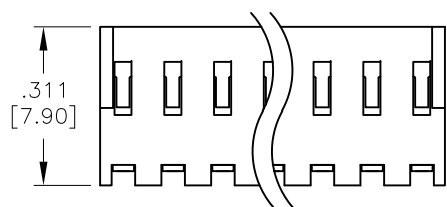
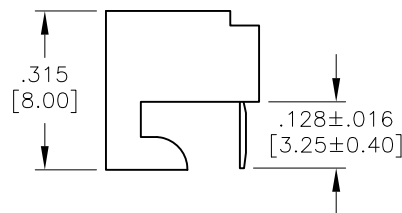
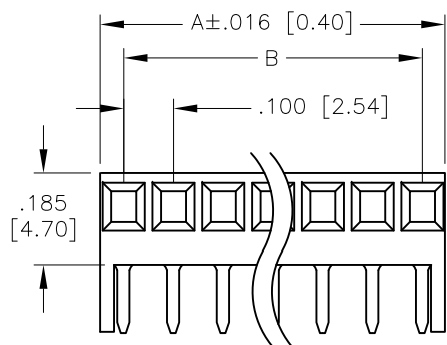


APPROVED: _____
 DATE: _____ TITLE: _____

Rev	AWO #	Description	Date	Appr
-		RELEASED	6/2/05	
A		REDRAWN	10/5/11	
B		UPDATE TOLERANCE	1/29/21	LH/YC



RECOMMENDED
PCB LAYOUT

SPECIFICATIONS:

Material:

Insulator: Nylon, rated UL 94V-0

Insulator color: White

Contacts: Phosphor Bronze

Plating:

Tin over Copper underplate overall

Electrical:

Voltage rating: 250 V

Current rating: 2.5 Amp max.

Contact resistance: 20 mohms max. initial

Insulation resistance: 5000 Mohms min.

Dielectric withstanding voltage: 1,500 VAC for 1 minute

Mechanical:

Recommended PCB thickness: 0.062" (1.57mm)

Temperature Rating:

0°C to +75°C

Environmental:

Lead free, RoHS compliant



Positions: 02 thru 25

A = .100 [2.54] x No. of Spaces + .096 [2.44]

B = .100 [2.54] x No. of Spaces

UNLESS OTHERWISE SPECIFIED
 ALL DIMENSIONS ARE INCHES [MM]
 TOLERANCES: EXCEPT AS NOTED
 INCHES HOLES
 .X ±.10 Ø.X ±.10
 .XX ±.020 Ø.XX ±.015
 .XXX ±.015 Ø.XXX ±.010

APPROVALS		DATE
DRAWN	SS	6/2/05
CHECKED		
APPROVED		

ADAM
TECH

909 Rahway Avenue,
 Union, NJ 07083
 Phone: 908-687-5000
 Fax: 908-687-5710

TITLE
.100 [2.54] PCB CONNECTOR
BOARD HOOKS, SIDE ENTRY

SIZE X	PART NO. PCE-B-XX	REV. B
REF: S00123T	SCALE: NTS	SHEET 1 OF 1

Mouser Electronics

Authorized Distributor

Click to View Pricing, Inventory, Delivery & Lifecycle Information:

[Adam Tech:](#)

[PCE-B-10](#) [PCE-B-06](#) [PCE-B-12](#) [PCE-B-02](#) [PCE-B-03](#) [PCE-B-04](#) [PCE-B-11](#) [PCE-B-07](#) [PCE-B-09](#) [PCE-B-05](#)
[PCE-B-08](#)