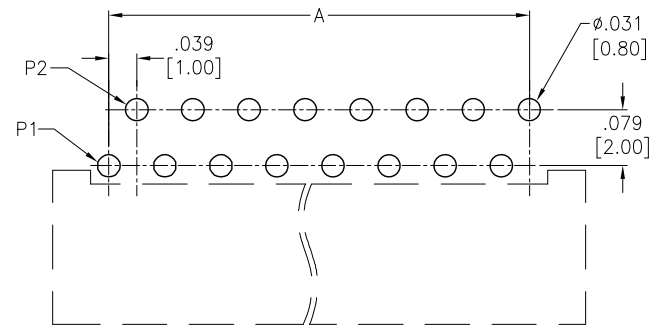
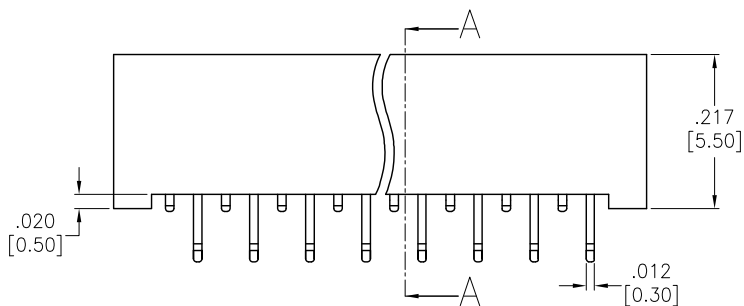
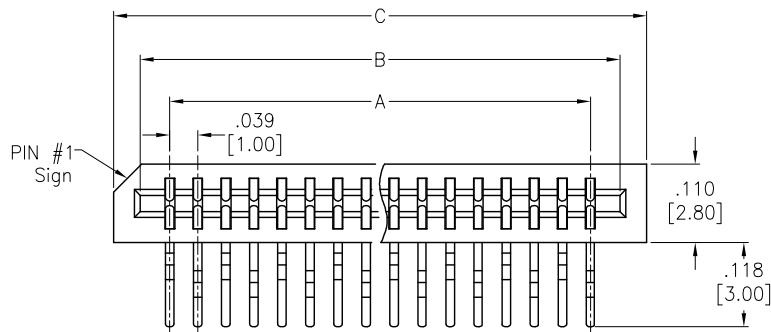


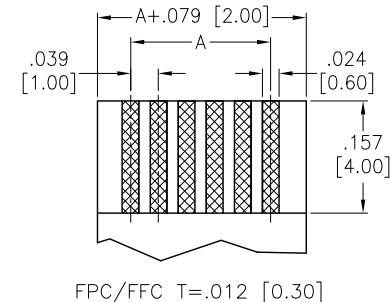
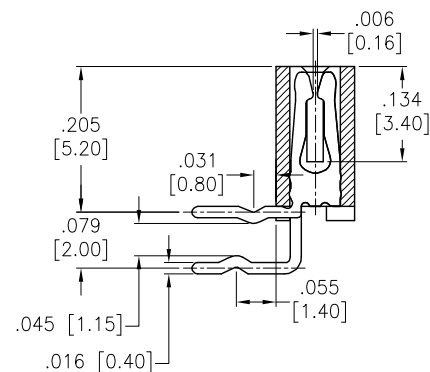
APPROVED: _____

DATE: _____ TITLE: _____

Rev	AWO #	Description	Date	Appr
-		RELEASED	12/10/04	
A		REDRAWN	2/6/15	AY/LL
B		UPDATE DRAWING	12/4/23	LH/LW



RECOMMENDED PCB LAYOUT



SPECIFICATIONS:

Material:

Insulator: Hi-Temp Thermoplastic, rated UL 94V-0

Insulator color: Black

Contacts: Copper Alloy

Plating:

Tin over Nickel underplate overall

Electrical:

Current rating: 1 Amps max

Contact resistance: 30 mohms max initial

Insulation resistance: 500 Mohms min

Dielectric withstanding voltage: 500 VAC for 1 minute

Temperature Rating:

Operating temperature: -25°C to +85°C

Environmental:

Lead free, RoHS compliant



Positions: 2 thru 36

A = .039 [1.00] x No. of Spaces

B = A + .083 [2.10]

C = A + .157 [4.00]

UNLESS OTHERWISE SPECIFIED ALL DIMENSIONS ARE INCHES [MM]. TOLERANCES: EXCEPT AS NOTED

INCHES		HOLES
.X	± .10	Ø.X ±.10
.XX	± .020	Ø.XX ±.015
.XXX	± .015	Ø.XXX ±.010

DRAWN	SS	12/10/04
CHECKED	AY	12/10/04
APPROVED		

THIS DRAWING CONTAINS INFORMATION THAT IS PROPRIETARY AND SHOULD NOT BE USED WITHOUT PRIOR WRITTEN PERMISSION FROM ADAM TECH

ADAM
TECH

909 Rahway Avenue,
Union, NJ 07083
Phone: 908-687-5000
Fax: 908-687-5710

TITLE LIF FLEX CIRCUIT CONNECTOR SIDE ENTRY, 2.00 MM PCB ROW SPACING		REV. B
SIZE X	PART NO. PCB-C-XX-SA-20	
REF: S00165C	SCALE: NTS	SHEET 1 OF 1

Mouser Electronics

Authorized Distributor

Click to View Pricing, Inventory, Delivery & Lifecycle Information:

[Adam Tech:](#)

[PCB-C-18-SA-20](#) [PCB-C-06-SA-20](#) [PCB-C-12-SA-20](#) [PCB-C-16-SA-20](#) [PCB-C-20-SA-20](#) [PCB-C-08-SA-20](#) [PCB-C-11-SA-20](#) [PCB-C-22-SA-20](#) [PCB-C-07-SA-20](#) [PCB-C-10-SA-20](#) [PCB-C-09-SA-20](#) [PCB-C-26-SA-20](#) [PCB-C-04-SA-20](#) [PCB-C-05-SA-20](#)