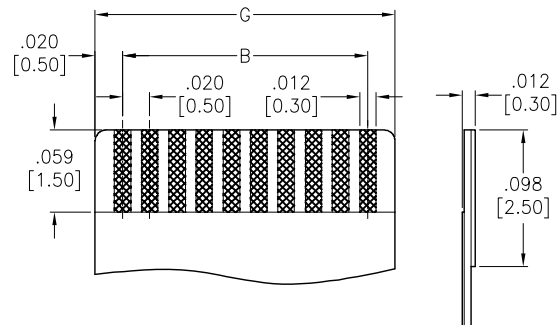
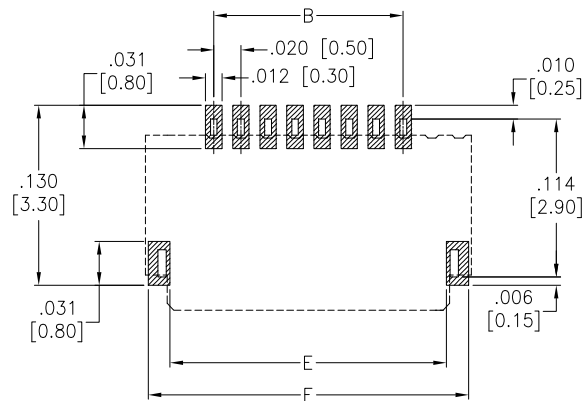
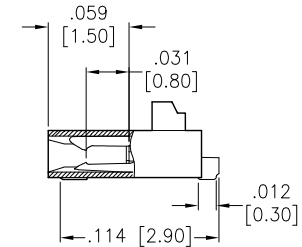
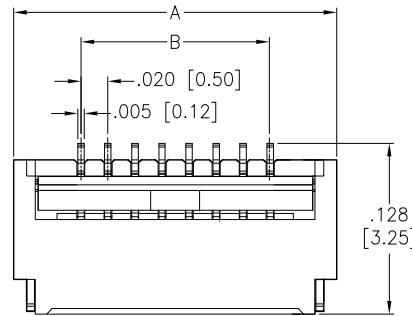


APPROVED: _____
 DATE: _____ TITLE: _____

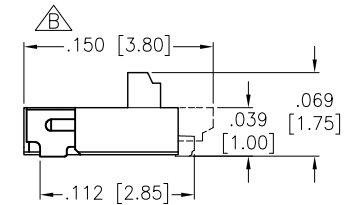
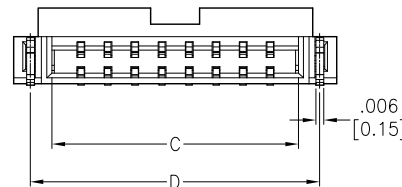
Rev	AWO #	Description	Date	Appr
-		RELEASED	8/20/15	
A		UPDATED SPEC.	11/18/16	HR/IC
B		UPDATED DIM.	1/22/18	AY/NP



Recommended FPC/FFC Dimensions



RECOMMENDED PCB LAYOUT



SPECIFICATIONS:

Material:
 Insulator: Hi-temp thermoplastic (LCP), rated UL 94V-0
 Insulator color: Natural
 Actuator: Hi-temp thermoplastic (LCP), rated UL 94V-0, Color: Black
 Contacts: Copper Alloy
 Holddown: Copper Alloy, Gold plated
 Plating:
 Gold flash over Nickel underplate overall
 Electrical:
 Rated Voltage: 30 VAC/DC max
 Rated Current: 0.2 Amps max
 Contact Resistance: 40 mohms max
 Insulation resistance: 50 Mohms min @ 500 VDC
 Dielectric withstanding voltage: 250 VAC for 1 minut
 Temperature Rating:
 Operating temperature: -25°C to +85°C
 Environmental:
 Lead free, RoHS compliant



PACKAGED ON TAPE & REEL

Positions: 4 thru 50

A = .020 [0.50] x No. of Spaces +.098 [2.50]
 B = .020 [0.50] x No. of Spaces
 C = .020 [0.50] x No. of Spaces +.042 [1.07]
 D = .020 [0.50] x No. of Spaces +.074 [1.88]
 E = .020 [0.50] x No. of Spaces +.063 [1.60]
 F = .020 [0.50] x No. of Spaces +.094 [2.40]
 G = .020 [0.50] x No. of Spaces +.039 [1.00]

UNLESS OTHERWISE SPECIFIED
 ALL DIMENSIONS ARE INCHES [MM]
 TOLERANCES: EXCEPT AS NOTED
 INCHES HOLES
 .X ±.10 Ø.X ±.10
 .XX ±.020 Ø.XX ±.015
 .XXX ±.015 Ø.XXX ±.010

APPROVALS		DATE
DRAWN	AY	8/20/15
CHECKED	GC	8/20/15
APPROVED		

**ADAM
 TECH
 INTERCONNECTS**

909 Rahway Avenue,
 Union, NJ 07083
 Phone: 908-687-5000
 Fax: 908-687-5710

TITLE ZIF FLEX CIRCUIT CONNECTOR, SMT TYPE
 SIDE ENTRY, DUAL CONTACT

SIZE X	PART NO. PCA-6MA-XX-HD-3-G-T/R	REV. B
REF: S00165C	SCALE: NTS	SHEET 1 OF 1

Mouser Electronics

Authorized Distributor

Click to View Pricing, Inventory, Delivery & Lifecycle Information:

[Adam Tech:](#)

[PCA-6MA-10-HD-3-G-T/R](#) [PCA-6MA-12-HD-3-G-T/R](#) [PCA-6MA-24-HD-3-G-T/R](#) [PCA-6MA-20-HD-3-G-T/R](#) [PCA-6MA-06-HD-3-G-T/R](#) [PCA-6MA-04-HD-3-G-T/R](#) [PCA-6MA-08-HD-3-G-T/R](#)