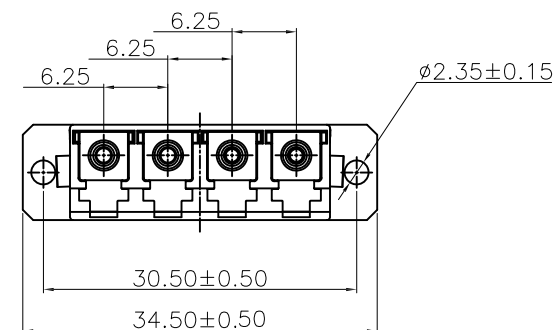
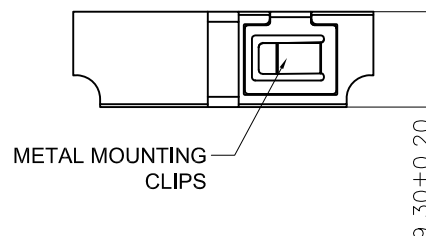
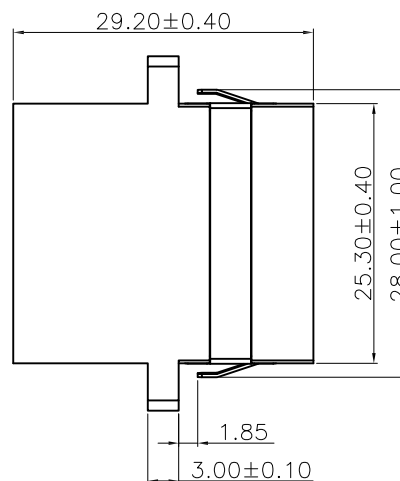
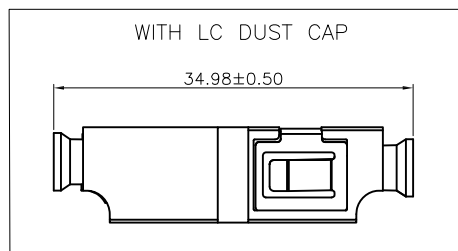


6 5 4 3 2 1

APPROVED: \_\_\_\_\_  
DATE: \_\_\_\_\_ TITLE: \_\_\_\_\_

Rev	AWO #	Description	Date	Appr
-		RELEASED	9/8/20	
A		UPDATE SPEC.	10/12/22	WX/KL



PART NUMBER	DESCRIPTION	HOUSING COLOR	CAP COLOR
OPLA4ANNC1NA	LC APC, 4 PORTS, LONG EARS, W/O MOUNTING CLIPS, LC DUST CAP	PEI 7737C Green	PP White
OPLA4ANNC1PA	LC APC, 4 PORTS, LONG EARS, W/ MOUNTING CLIPS, LC DUST CAP	PEI 7737C Green	PP White
OPLB4ANNC1NA	LC PC, 4 PORTS, LONG EARS, W/O MOUNTING CLIPS, LC DUST CAP	PEI 2184C Blue	PP White
OPLB4ANNC1PA	LC PC, 4 PORTS, LONG EARS, W/ MOUNTING CLIPS, LC DUST CAP	PEI 2184C Blue	PP White

**SPECIFICATIONS:**

Material:  
Housing: PEI, rated UL 94V-0, Color: See Chart  
Cap: PP, rated UL 94V-0, Color: White  
Mounting clips: SUS Stainless steel  
Sleeve: Zirconia ceramic  
Electrical:

Standards of IEC 61754-20, YD/T 1272.1-2003  
Repeatability: 500 min times  
Insertion loss: 0.2dB max  
Interchangeability: 0.2dB  
Temperature Rating:  
Operating temperature: -40°C to +85°C  
Environmental:  
Lead free, RoHS compliant.



UNLESS OTHERWISE SPECIFIED ALL DIMENSIONS  
ARE INCHES [MM]. TOLERANCES: EXCEPT AS NOTED

INCHES	HOLES
.X ±.10	ØX ±.10
.XX ±.020	ØXX ±.015
.XXX ±.015	ØXXX ±.010

DRAWN	OW	9/8/20
CHECKED	JL	9/8/20
APPROVED		

THIS DRAWING CONTAINS INFORMATION THAT IS PROPRIETARY  
AND SHOULD NOT BE USED WITHOUT PRIOR WRITTEN  
PERMISSION FROM ADAM TECH

**ADAM  
TECH**

909 Rahway Avenue,  
Union, NJ 07083  
Phone: 908-687-5000  
Fax: 908-687-5710

TITLE  
OPTICAL LC ADAPTERS, APC&PC, 4 PORT,  
CERAMIC, LONG EARS, WITH LC DUST CAP

SIZE X	PART NO. OPLX4ANNC1XA	REV. A
REF: S00005C	SCALE: NTS	SHEET 1 OF 1

# Mouser Electronics

Authorized Distributor

Click to View Pricing, Inventory, Delivery & Lifecycle Information:

[Adam Tech:](#)

[OPLB4ANNC1PA](#)