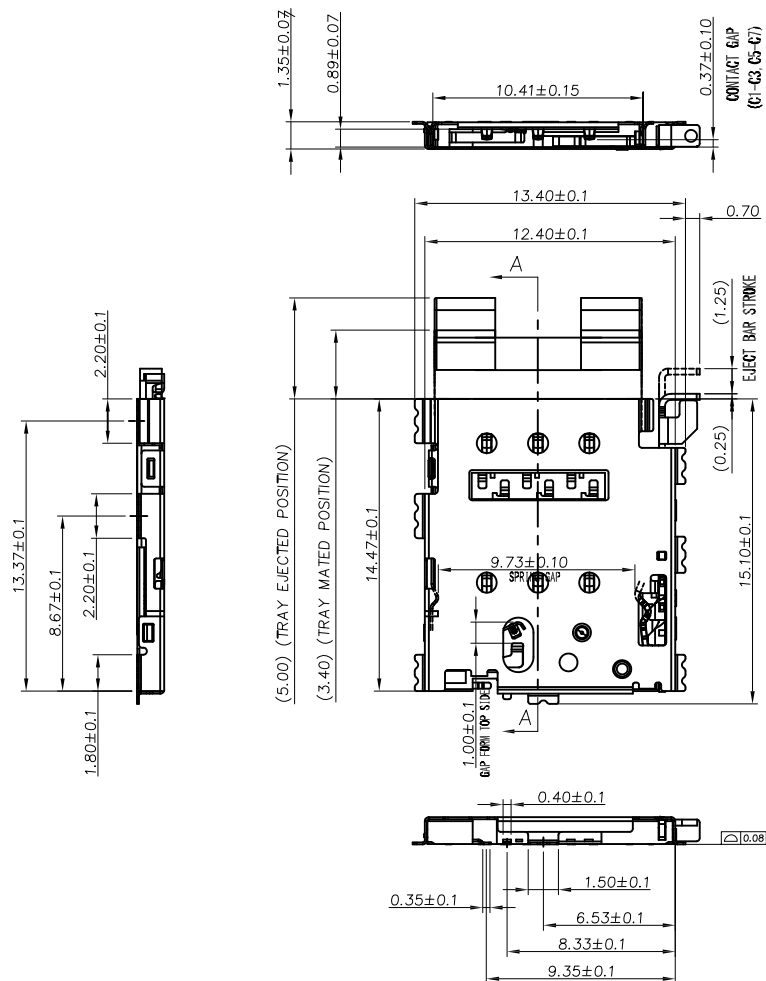


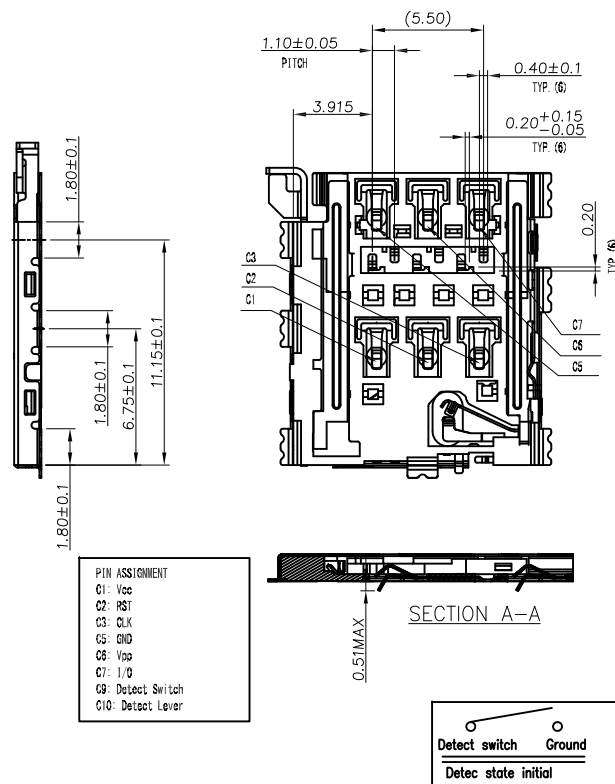
DATE: _____ TITLE: _____



Environmental:
Lead free, RoHS compliant



Rev	AWO #	Description	Date	Appr
-		RELEASED	3/29/16	
A		UPDATED DRAWING	7/18/17	HR/RT
B		UPDATED DRAWING	7/19/17	HR/MY
C		UPDATED DRAWING	11/10/20	LH/DH
D		TRAY COLOR CHG'D FROM BLACK TO WHITE	5/4/21	SS
E		UPDATED DRAWING	5/11/21	LH/RC
F		UPDATED DRAWING	7/23/21	LH/LL1
G		UPDATED PACKING	11/12/21	WX/RC



MM		ANGLE	
.X	± 0.30	.X	± 3°
.XX	± 0.20	.XX	± 1°
.XXX	± 0.10		

DRAWN	HR	3/29/16
CHECKED	LW	3/29/16
APPROVED		

THIS DRAWING CONTAINS INFORMATION THAT IS PROPRIETARY
AND SHOULD NOT BE USED WITHOUT PRIOR WRITTEN
PERMISSION FROM ADAM TECH

ADAM
TECH

909 Rahway Avenue,
Union, NJ 07083
Phone: 908-687-5000
Fax: 908-687-5710

TITLE	NANO SIM CARD CONNECTOR 6 PIN, GOLD PLATED, SMT TYPE
-------	---

SIZE Y	PART NO. NSCC-C-06-G-SMT-SW-T/R
-----------	------------------------------------

REF:	S00275T
------	---------

SCALE: NTS

SHEET 1 OF 5

REV
G

6

5

4

3

2

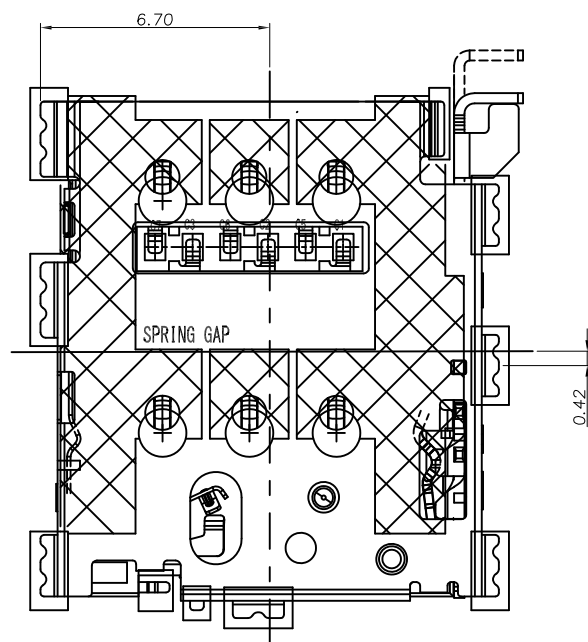
1

APPROVED: _____

DATE: _____ TITLE: _____

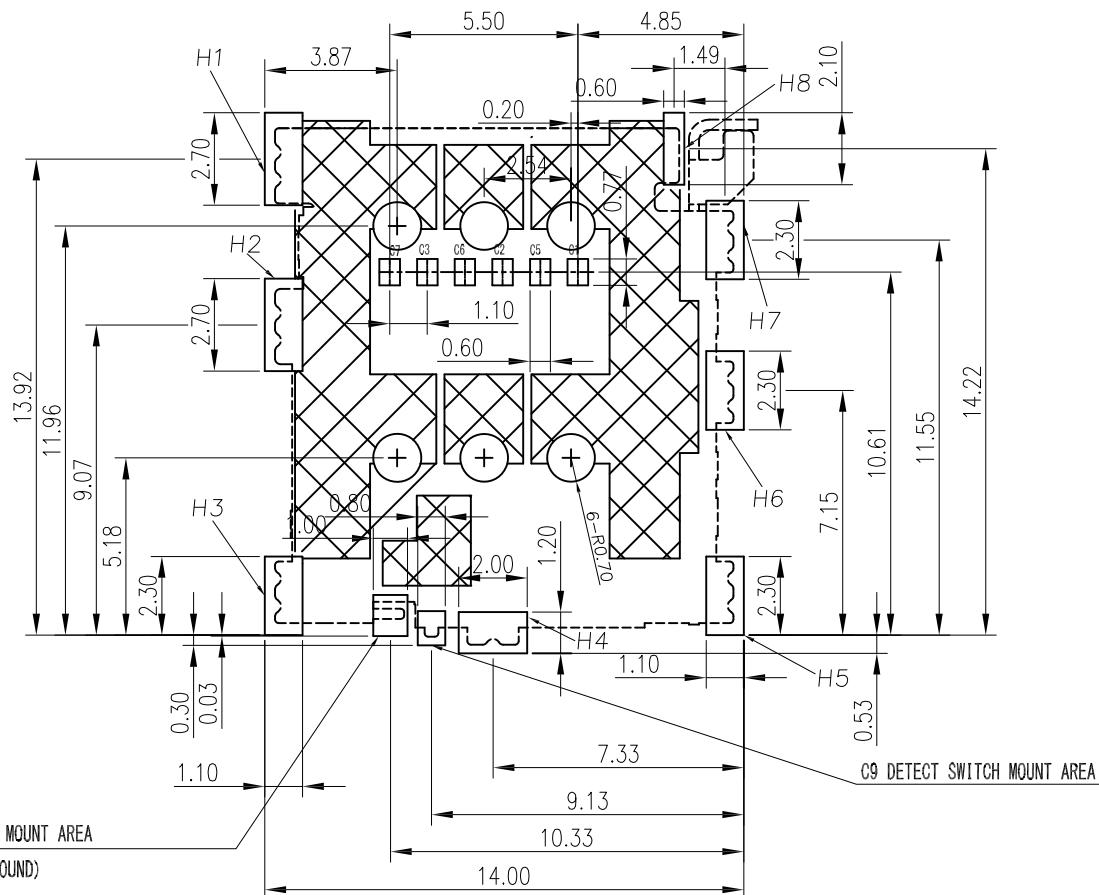
Rev AWO # Description Date Appr

SEE SHT 1 OF 5 FOR REVISION



SIM CARD PIN ASSIGNMENT

C1	Supply voltage Vcc
C2	Reset (RST)
C3	Clock CLK
C5	GND
C6	Programming voltage Vpp
C7	I/O
C9	DETECT SWITCH MOUNT AREA
C10	Vss: GROUND

DETECT LEVER MOUNT AREA
C10 (Vss: GROUND)UNLESS OTHERWISE SPECIFIED ALL DIMENSIONS
ARE MILLIMETERS. TOLERANCES: EXCEPT AS NOTED

MM	ANGLE
.X ± 0.30	.X ± 3°
.XX ± 0.20	.XX ± 1°
.XXX ± 0.10	

DRAWN HR 3/29/16

CHECKED LW 3/29/16

APPROVED

THIS DRAWING CONTAINS INFORMATION THAT IS PROPRIETARY
AND SHOULD NOT BE USED WITHOUT PRIOR WRITTEN
PERMISSION FROM ADAM TECH**ADAM**
TECH909 Rahway Avenue,
Union, NJ 07083
Phone: 908-687-5000
Fax: 908-687-5710TITLE
NANO SIM CARD CONNECTOR
6 PIN, GOLD PLATED, SMT TYPE

SIZE X PART NO. NSCC-C-06-G-SMT-SW-T/R REV. G

REF: S00275T SCALE: NTS SHEET 2 OF 5

6

5

4

3

2

1

6

5

4

3

2

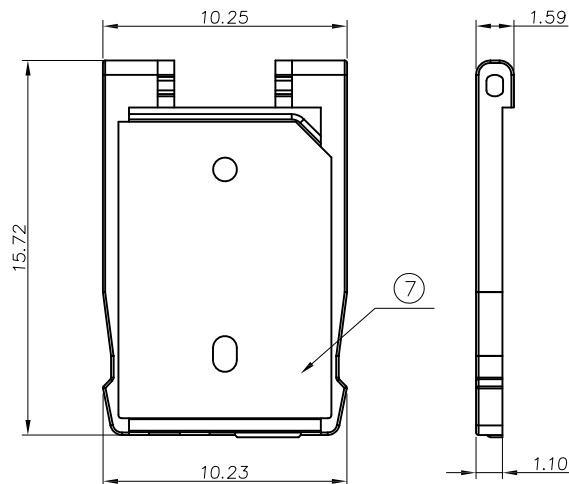
1

APPROVED: _____

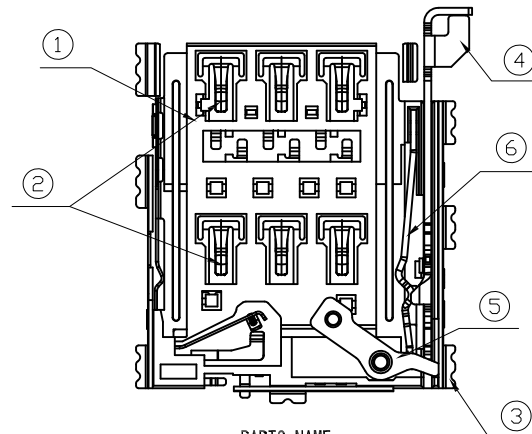
DATE: _____ TITLE: _____

Rev AWO # Description Date Appr

SEE SHT 1 OF 5 FOR REVISION



APPLICABLE TRAY



PARTS NAME

(Shell is displayed in the chain line.)

No.	NAME	MATERIAL	FINISH
①	HOUSING	LCP_S475 UL94V-0, WHITE	N/A
②	CONTACT	COPPER ALLOY (CWT322-ESH, T=0.1)	CONTACT AREA: GOLD 0.2 MICROMETER MINIMUM TAIL AREA: SEPARATED GOLD PLATING 0.02 MICROMETER MINIMUM UNDER PLATING: NICKEL 1.0 MICROMETER MINIMUM
③	SHELL	STAINLESS STEEL (SUS301-H, T=0.1)	CONTACT AREA: GOLD 0.2 MICROMETER MINIMUM TAIL AREA: SEPARATED GOLD PLATING 0.02 MICROMETER MINIMUM
④	LEVER	STAINLESS STEEL (SUS301-H, T=0.3)	N/A
⑤	CAM	STAINLESS STEEL (SUS301-1/2H, T=0.5)	N/A
⑥	LATCH	STAINLESS STEEL (SUS301-H, T=0.25)	N/A
⑦	TRAY	NYLON 4160+SUS301	N/A

Environmental:
Lead free, RoHS compliantUNLESS OTHERWISE SPECIFIED ALL DIMENSIONS
ARE MILLIMETERS. TOLERANCES: EXCEPT AS NOTED

MM	ANGLE
.X ± 0.30	.X ± 3°
.XX ± 0.20	.XX ± 1°
.XXX ± 0.10	

DRAWN HR 3/29/16

CHECKED LW 3/29/16

APPROVED

THIS DRAWING CONTAINS INFORMATION THAT IS PROPRIETARY
AND SHOULD NOT BE USED WITHOUT PRIOR WRITTEN
PERMISSION FROM ADAM TECH**ADAM
TECH**909 Rahway Avenue,
Union, NJ 07083
Phone: 908-687-5000
Fax: 908-687-5710TITLE
NANO SIM CARD CONNECTOR
6 PIN, GOLD PLATED, SMT TYPESIZE X PART NO. NSCC-C-06-G-SMT-SW-T/R REV. G
REF: S00275T SCALE: NTS SHEET 3 OF 5

6

5

4

3

2

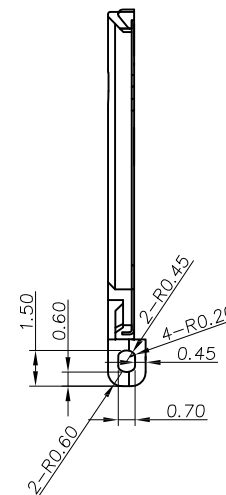
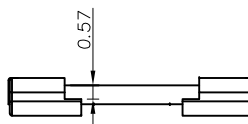
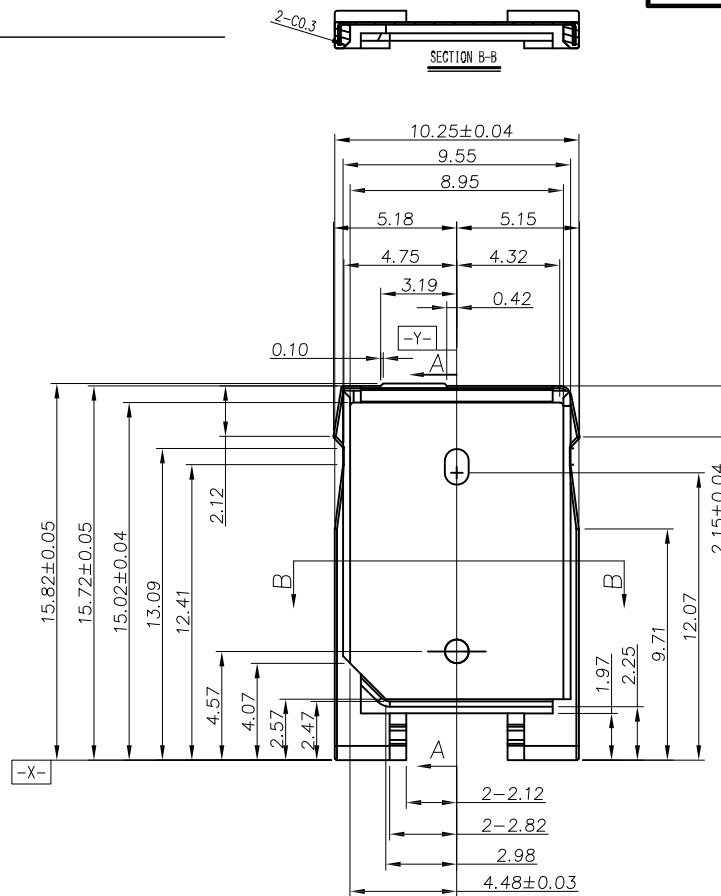
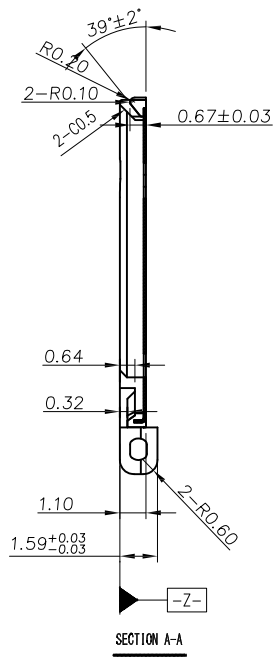
1

APPROVED: _____

DATE: _____ TITLE: _____

Rev AWO # Description Date Appr

SEE SHT 1 OF 5 FOR REVISION



UNLESS OTHERWISE SPECIFIED ALL DIMENSIONS ARE MILLIMETERS. TOLERANCES: EXCEPT AS NOTED

MM	ANGLE
.X ± 0.30	.X $\pm 3^\circ$
.XX ± 0.20	.XX $\pm 1^\circ$
.XXX ± 0.10	

DRAWN	HR	3/29/16
CHECKED	LW	3/29/16
APPROVED		

THIS DRAWING CONTAINS INFORMATION THAT IS PROPRIETARY AND SHOULD NOT BE USED WITHOUT PRIOR WRITTEN PERMISSION FROM ADAM TECH

ADAM
TECH

909 Rahway Avenue,
Union, NJ 07083
Phone: 908-687-5000
Fax: 908-687-5710

TITLE	
NANO SIM CARD CONNECTOR 6 PIN, GOLD PLATED, SMT TYPE	
SIZE X	PART NO. NSCC-C-06-G-SMT-SW-T/R
REF: S00275T	SCALE: NTS

REV.
G

SHEET 4 OF 5

6

5

4

3

2

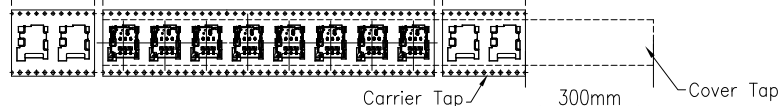
1

APPROVED: _____

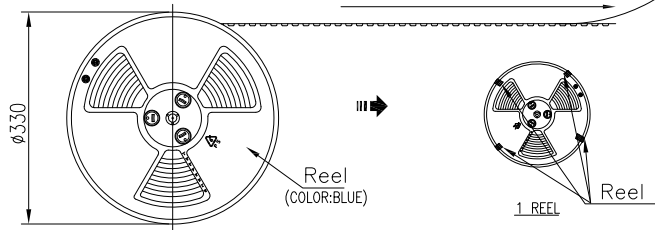
DATE: _____ TITLE: _____

THE END APPROXIMATELY
15PCS EMPTY CARRIER

PACKING 1000PCS PRODUCT

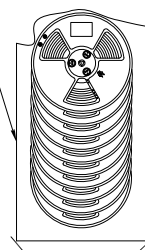
FIRST APPROXIMATELY
15PCS EMPTY CARRIER

PEELING FORCE DIRECTION

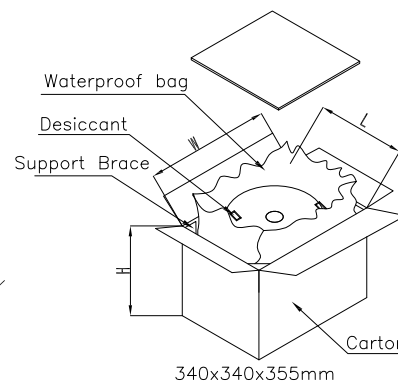


Waterproof bag

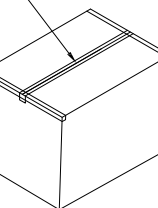
Reel is fixed with tape



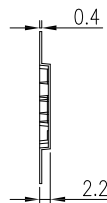
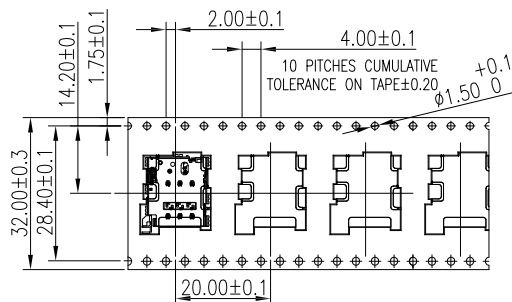
TOTAL 9 REEL



ADHESIVE TAPE



SHIPPING CARTON



PCS/REEL	REEL/CARTON	TOTAL
1,000 PCS	9 PCS	9,000 PCS

D

D

C

C

B

B

A

A

THE END APPROXIMATELY
15PCS EMPTY CARRIER

PACKING 1000PCS PRODUCT

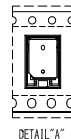


300mm

SEE DETAIL "A"

FIRST APPROXIMATELY
15PCS EMPTY CARRIER

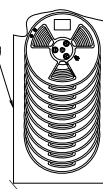
Cover Tap



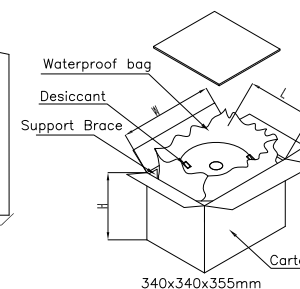
DETAIL "A"

PCS/REEL	REEL/CARTON	TOTAL
1,000 PCS	9 PCS	9,000 PCS

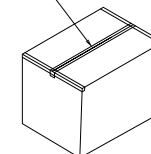
Waterproof bag



TOTAL 9 REEL



ADHESIVE TAPE



SHIPPING CARTON

UNLESS OTHERWISE SPECIFIED ALL DIMENSIONS
ARE MILLIMETERS. TOLERANCES: EXCEPT AS NOTED

MM	ANGLE
.X ± 0.30	.X ± 3°
.XX ± 0.20	.XX ± 1°
.XXX ± 0.10	

DRAWN	HR	3/29/16
CHECKED	LW	3/29/16
APPROVED		

THIS DRAWING CONTAINS INFORMATION THAT IS PROPRIETARY
AND SHOULD NOT BE USED WITHOUT PRIOR WRITTEN
PERMISSION FROM ADAM TECH
ADAM
TECH

 909 Rahway Avenue,
 Union, NJ 07083
 Phone: 908-687-5000
 Fax: 908-687-5710

 TITLE
 NANO SIM CARD CONNECTOR
 6 PIN, GOLD PLATED, SMT TYPE

SIZE X	PART NO. NSCC-C-06-G-SMT-SW-T/R	REV. G
REF: S00275T	SCALE: NTS	SHEET 5 OF 5

6

5

4

3

2

1

Mouser Electronics

Authorized Distributor

Click to View Pricing, Inventory, Delivery & Lifecycle Information:

[Adam Tech:](#)

[NSCC-C-06-G-SMT-SW-T/R](#)