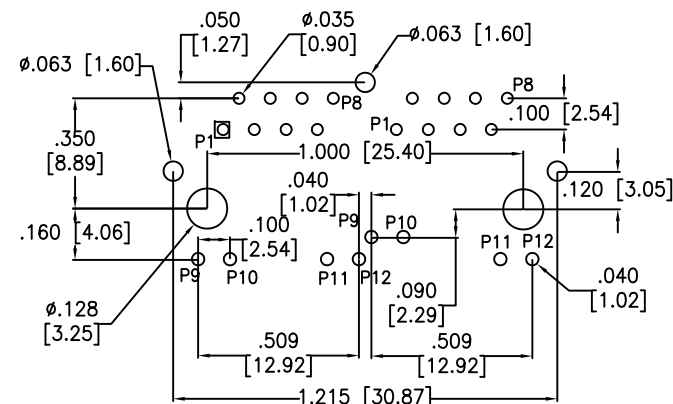
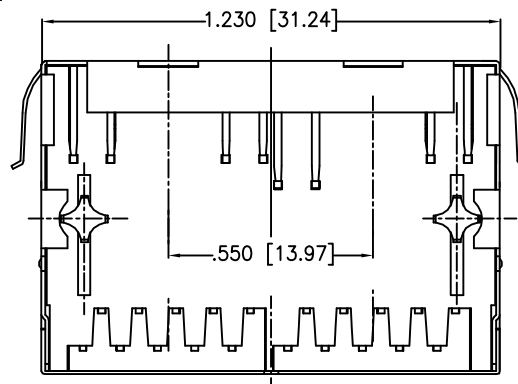
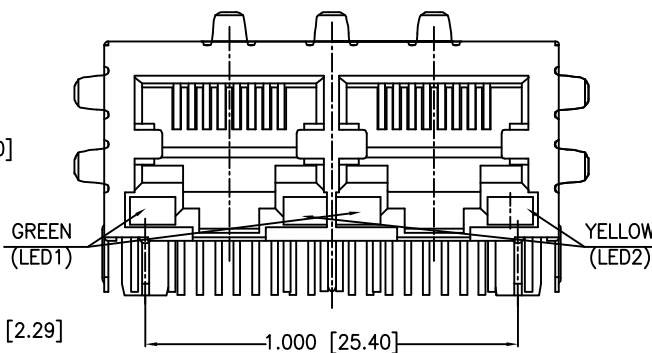
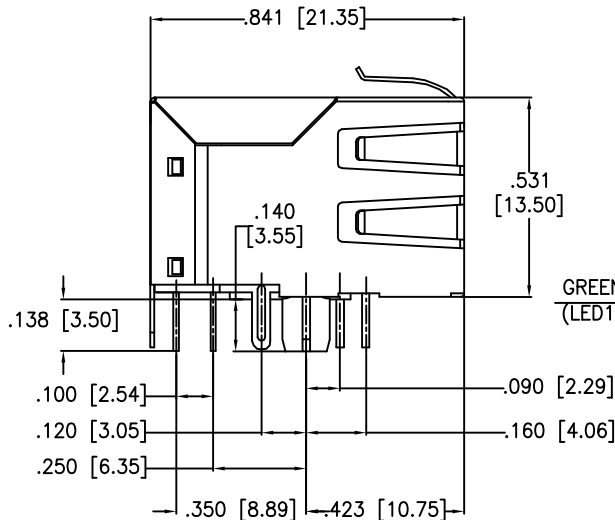


APPROVED: _____
DATE: _____ TITLE: _____

Rev	AWO #	Description	Date	Appr
-		RELEASED	3/4/10	
A		CORRECTED PCB LAYOUT	4/12/10	AY/LW
B		UPDATED DRAWING	7/29/16	AY/MY



RECOMMENDED PCB LAYOUT

SPECIFICATIONS:

Material:

Housing: PA66, rated UL 94V-0, Color: Black

Insert: PBT, rated UL 94V-0, Color: Black

Contacts: Copper Alloy

Shield: Copper Alloy, Nickel plated

Plating:

Round contact

Gold over Nickel underplate overall

Flat contact

Gold over Nickel underplate on contact area,

Tin over Nickel underplate on solder tails

(See chart for thickness)

Electrical:

Voltage rating: 150 VAC

Contact Resistance: 20 mohms max

Insulation resistance: 500 Mohms min

Dielectric withstanding voltage: 1500 VAC or 2250VDC for 1 minute

Temperature Rating:

Operating temperature: 0°C to +70°C

Environmental:

Lead free, RoHS compliant.

X	PLATING
0	15 µin Gold
1	30 µin Gold
2	50 µin Gold
6	6 µin Gold

UNLESS OTHERWISE SPECIFIED
ALL DIMENSIONS ARE INCHES [MM]
TOLERANCES: EXCEPT AS NOTED
INCHES HOLES
.X ± .10 Ø.X ± .10
.XX ± .020 Ø.XX ± .015
.XXX ± .015 Ø.XXX ± .010

APPROVALS		DATE
DRAWN	SS	3/4/10
CHECKED		
APPROVED		

ADAM TECH

909 Rahway Avenue, Union, NJ 07083

Phone: 908-687-5000 Fax: 908-687-5710

TITLE
MODULAR JACK GANGED, 2 PORT, 8P8C
W/ LED1 GREEN, LED2 YELLOW

SIZE	PART NO.	REV.
X	MTJG-2-88TX1-FSD-PG-LH-M4	B
REF:	S00005C	SCALE: NTS
SHEET 1 OF 2		



6

5

4

3

2

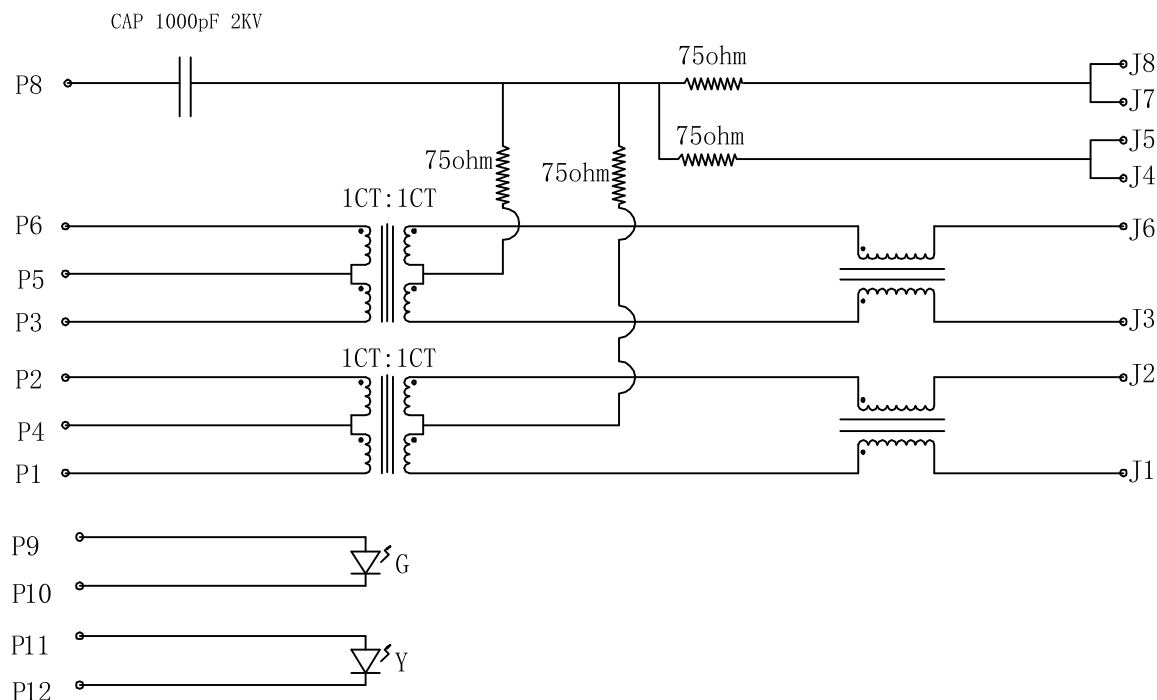
1

APPROVED: _____

DATE: _____ TITLE: _____

Rev AWO # Description Date Appr

SEE SHT 1 OF 2 FOR REVISION



ELECTRICAL SPECIFICATIONS

- Turns Ratio: (P1 ~ P2) : (J1 ~ J2) 1:1 $\pm 3\%$
(P3 ~ P6) : (J3 ~ J6) 1:1 $\pm 3\%$
- Inductance: (P1 ~ P2) 350uH min. @ 0.1V, 100KHZ, 8mA DC Bias
(P3 ~ P6) 350uH min. @ 0.1V, 100KHZ, 8mA DC Bias
- Leakage Inductance: P1 ~ P2 (with J1 and J2 Short): 0.35uH Max. @ 1 MHZ
P3 ~ P6 (with J3 and J6 Short): 0.35uH Max. @ 1 MHZ
- Interwinding Capacitor: (P1 ~ P2) : (J1 ~ J2): 35pF max. @ 1MHZ
(P3 ~ P6) : (J3 ~ J6): 35pF max @ 1mhz
- DC Resistance: (J1 ~ J2) : (J3 ~ J6): 1.2 Ohms Max.
- Return Loss: 1MHZ to 30MHZ: -18dB MIN
30MHZ to 60MHZ: $-(18-20\text{LOG}(f/30))\text{dB}$ MIN (WHERE f IS IN MHZ)
60MHZ to 80MHZ: -12dB MIN
- Dielectric Withstanding: (P1~P2) : (J1~J2): (P3~P4) : (J3~J6) : 1500VAC or 2250VDC
- Insertion Loss: 1MHZ TO 100MHZ : -1.2dB MAX
- Cross Talk: 1MHZ to 100MHZ: -30dB MIN
- Common to Common mode attenuation: 1MHZ TO 100MHZ: -30dB MIN

UNLESS OTHERWISE SPECIFIED
ALL DIMENSIONS ARE INCHES [MM]
TOLERANCES: EXCEPT AS NOTED
INCHES HOLES

.X	$\pm .10$	$\varnothing .X$	$\pm .10$
.XX	$\pm .020$	$\varnothing .XX$	$\pm .015$
.XXX	$\pm .015$	$\varnothing .XXX$	$\pm .010$

APPROVALS

DATE

DRAWN

SS

3/4/10

CHECKED

APPROVED

ADAM TECH

909 Rahway Avenue, Union, NJ 07083
Phone: 908-687-5000 Fax: 908-687-5710

TITLE

MODULAR JACK GANGED, 2 PORT, 8P8C
W/ LED1 GREEN, LED2 YELLOW

SIZE

X

PART NO.

MTJG-2-88TX1-FSD-PG-LH-M4

REV.

B

REF:

S00005C

SCALE: NTS

SHEET 1 OF 2

6

5

4

3

2

1

Mouser Electronics

Authorized Distributor

Click to View Pricing, Inventory, Delivery & Lifecycle Information:

[Adam Tech:](#)

[MTJG-2-88TX1-FSD-PG-LH-M4](#)