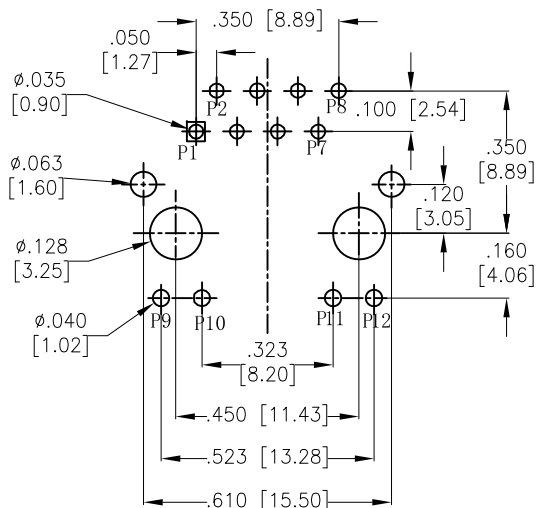


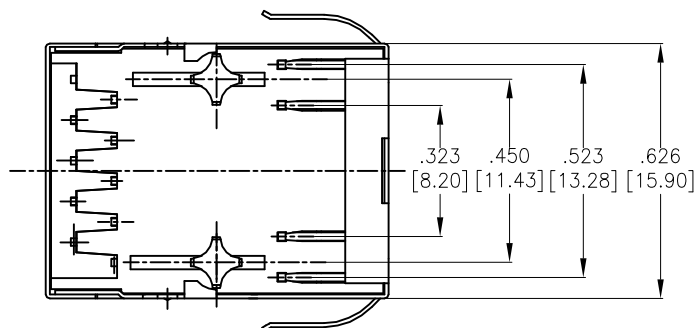
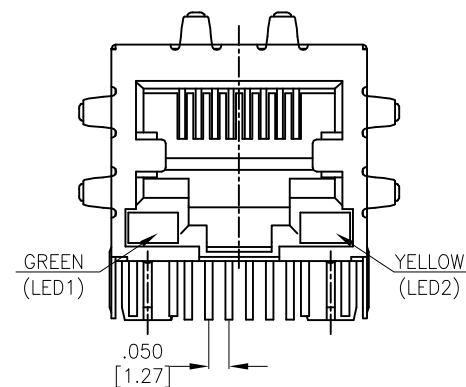
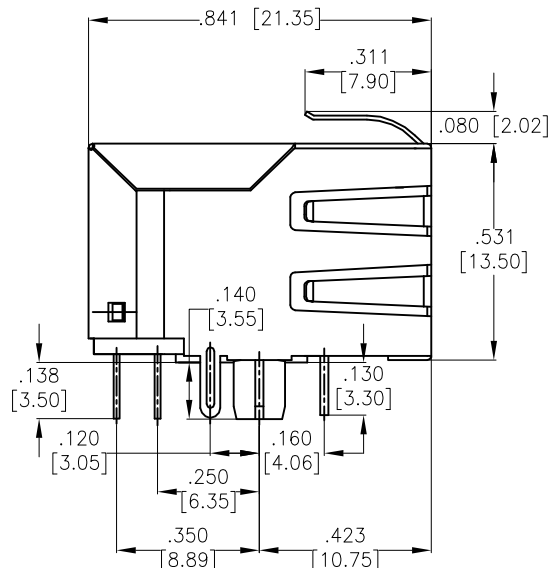
APPROVED: \_\_\_\_\_

DATE: \_\_\_\_\_ TITLE: \_\_\_\_\_

| Rev | AWO # | Description     | Date    | Appr  |
|-----|-------|-----------------|---------|-------|
| -   |       | RELEASED        | 5/21/12 |       |
| A   |       | UPDATED DRAWING | 11/1/16 | HR/AT |



RECOMMENDED PCB LAYOUT



| X | PLATING     |
|---|-------------|
| 0 | 15 µin Gold |
| 1 | 30 µin Gold |
| 2 | 50 µin Gold |
| 6 | 6 µin Gold  |

SPECIFICATIONS:

Material:

Insulator: Thermoplastic, rated UL 94V-0

Insulator color: Black

Contacts: Copper Alloy

Shield: Copper Alloy, Nickel plated

Plating:

Round contact

Gold over Nickel underplate overall

Flat contact

Gold over Nickel underplate on contact area,

Tin over Nickel underplate on solder tails

(See chart for thickness)

Electrical:

Voltage rating: 150 VAC

Contact resistance: 20 mohms max

Insulation resistance: 500 Mohms min

Dielectric withstanding voltage: 1500VAC or 2250VDC

Temperature Rating:

Operating temperature: 0°C to +70°C

Environmental:

Lead free, RoHS compliant.



UNLESS OTHERWISE SPECIFIED  
ALL DIMENSIONS ARE INCHES [MM]  
TOLERANCES: EXCEPT AS NOTED  
INCHES HOLES  
.X ±.10 Ø.X ±.10  
.XX ±.020 Ø.XX ±.015  
.XXX ±.015 Ø.XXX ±.010

| APPROVALS |    | DATE    |
|-----------|----|---------|
| DRAWN     | AY | 5/21/12 |
| CHECKED   | AC | 5/21/12 |
| APPROVED  |    |         |

**ADAM TECH**

909 Rahway Avenue, Union, NJ 07083

Phone: 908-687-5000 Fax: 908-687-5710

TITLE  
MODULAR JACK GANGED, 1 PORT, 8P8C  
W/ LED1 GREEN, LED 2 YELLOW

| SIZE         | PART NO.               | REV.         |
|--------------|------------------------|--------------|
| X            | MTJ-88TX1-FSD-PG-LH-M4 | A            |
| REF: S00005C |                        | SCALE: NTS   |
|              |                        | SHEET 1 OF 2 |

6

5

4

3

2

1

APPROVED: \_\_\_\_\_

DATE: \_\_\_\_\_ TITLE: \_\_\_\_\_

Rev

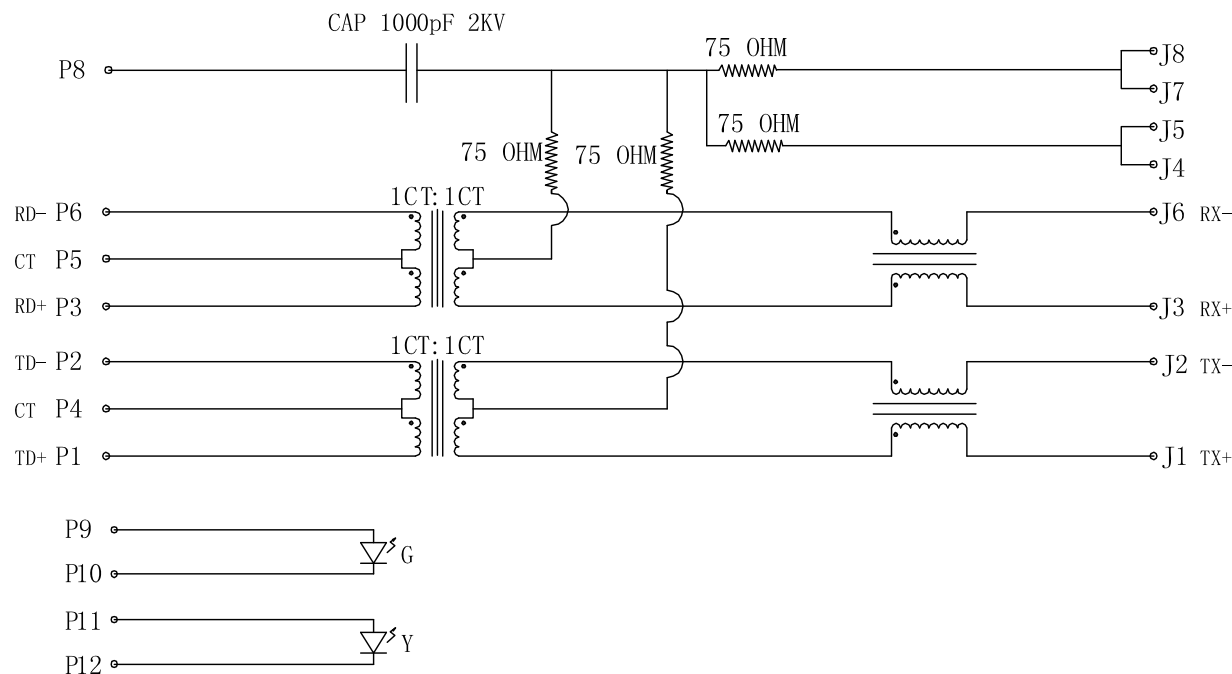
AWO #

Description

Date

Appr

SEE SHT 1 OF 2 FOR REVISION



## ELECTRICAL SPECIFICATIONS:

- Turns Ratio: (P1 ~ P2) : (J1 ~ J2) 1:1  $\pm 3\%$   
(P3 ~ P6) : (J3 ~ J6) 1:1  $\pm 3\%$
- Inductance: (P1 ~ P2) and (P3 ~ P6) 350uH min. @ 0.1V, 100KHZ, 8mA DC Bias
- Leakage Inductance: P1 ~ P2 (with J1 and J2 Short): 0.35uH Max @ 1 MHZ  
P3 ~ P6 (with J3 and J6 Short): 0.35uH Max @ 1 MHZ
- Interwinding Capacitance: (P1 ~ P2) : (J1 ~ J2): 35pF Max. @ 1MHZ  
(P3 ~ P6) : (J3 ~ J6): 35pF Max @ 1MHZ
- DC Resistance:(J1 ~ J2):(J3 ~ J6) :1.2 Ohms Max
- Return Loss: 1MHZ to 30MHZ: -18dB Min  
30MHZ to 60MHZ:  $-(18-20\log(f/30))$ dB Min (whrer f is in MHZ)  
60MHZ to 80MHZ: -12dB Min
- Dielectric Withstanding: (P1~P2) : (J1~J2) : 1500VAC or 2250VDC  
(P3~P6) : (J3~J6) : 1500VAC or 2250VDC
- Insertion Loss: 1MHZ TO 100MHZ : -1.2dB Max
- Cross Talk: 1MHZ to 100MHZ: -30dB Min
- Common to Common mode Attenuation 1MHZ to 100MHZ: -30dB Min

UNLESS OTHERWISE SPECIFIED  
ALL DIMENSIONS ARE INCHES [MM]  
TOLERANCES: EXCEPT AS NOTED  
INCHES HOLES  
.X  $\pm .10$   $\varnothing$ .X  $\pm .10$   
.XX  $\pm .020$   $\varnothing$ .XX  $\pm .015$   
.XXX  $\pm .015$   $\varnothing$ .XXX  $\pm .010$

APPROVALS

DATE

DRAWN

AY

5/21/12

CHECKED

AC

5/21/12

APPROVED

**ADAM TECH**

909 Rahway Avenue, Union, NJ 07083  
Phone: 908-687-5000 Fax: 908-687-5710

TITLE  
MODULAR JACK GANGED, 1 PORT, 8P8C  
W/ LED1 GREEN, LED 2 YELLOW

SIZE

PART NO.

REV.

X

MTJ-88TX1-FSD-PG-LH-M4

A

REF: S00005C

SCALE: NTS

SHEET 2 OF 2

6

5

4

3

2

1

# Mouser Electronics

Authorized Distributor

Click to View Pricing, Inventory, Delivery & Lifecycle Information:

[Adam Tech:](#)

[MTJ-88TX1-FSD-PG-LH-M4](#)