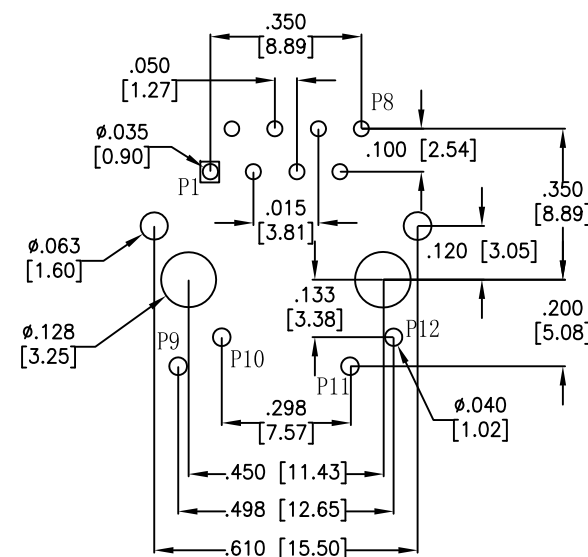
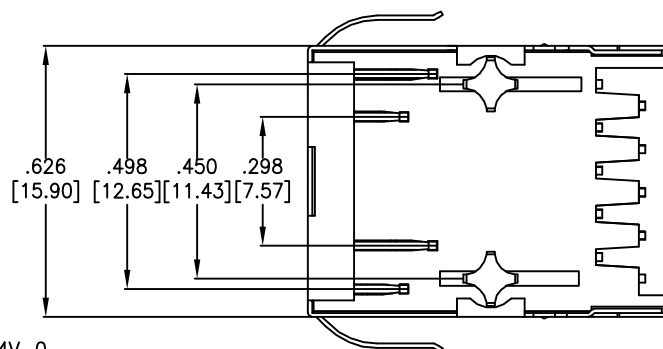
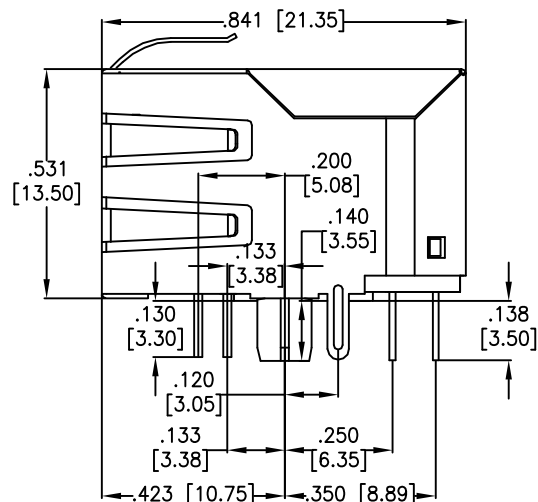
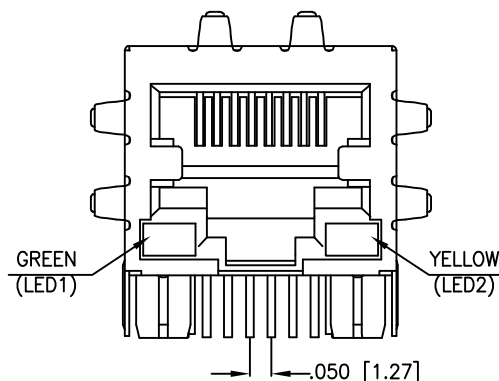


APPROVED: _____

DATE: _____ TITLE: _____

Rev	AWO #	Description	Date	Appr
-		RELEASED	4/22/15	
A		REVISED DIM.	10/23/15	HR/MY



RECOMMENDED PCB LAYOUT
(COMPONENT SIDE)

SPECIFICATIONS:

Material:

Insulator: PBT, glass reinforced, rated UL 94V-0

Insulator color: Black

Contacts: Copper Alloy

Shield: Copper Alloy, Nickel plated

Plating:

Round contact

Gold over Nickel underplate overall

Flat contact

Gold over Nickel underplate on contact area,

Tin over Nickel underplate on solder tails

(See chart for thickness)

Electrical:

Operating voltage: 150 VAC max

Contact Resistance: 20 mohms max

Insulation resistance: 500 Mohms min

Dielectric withstanding voltage: 1500 VAC for 1 minute

Temperature Rating:

Operating temperature: 0°C to +70°C

Environmental:

Lead free, RoHS compliant.

X	PLATING
0	15 µin Gold
1	30 µin Gold
2	50 µin Gold

UNLESS OTHERWISE SPECIFIED
ALL DIMENSIONS ARE INCHES [MM]
TOLERANCES: EXCEPT AS NOTED
INCHES HOLES
.X ±.10 Ø.X ±.10
.XX ±.020 Ø.XX ±.015
.XXX ±.015 Ø.XXX ±.010

APPROVALS		DATE
DRAWN	HR	4/22/15
CHECKED	LL	4/22/15
APPROVED		

ADAM TECH

909 Rahway Avenue, Union, NJ 07083

Phone: 908-687-5000 Fax: 908-687-5710

TITLE
MODULAR JACK GANGED, 1 PORT, 8P8C
W/LED1 GREEN, LED2 YELLOW

SIZE	PART NO.	REV.
X	MTJ-88TX1-FSD-PG-D1LH-M4C	A
REF: S00005C	SCALE: NTS	SHEET 1 OF 2



6

5

4

3

2

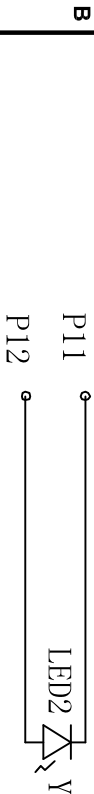
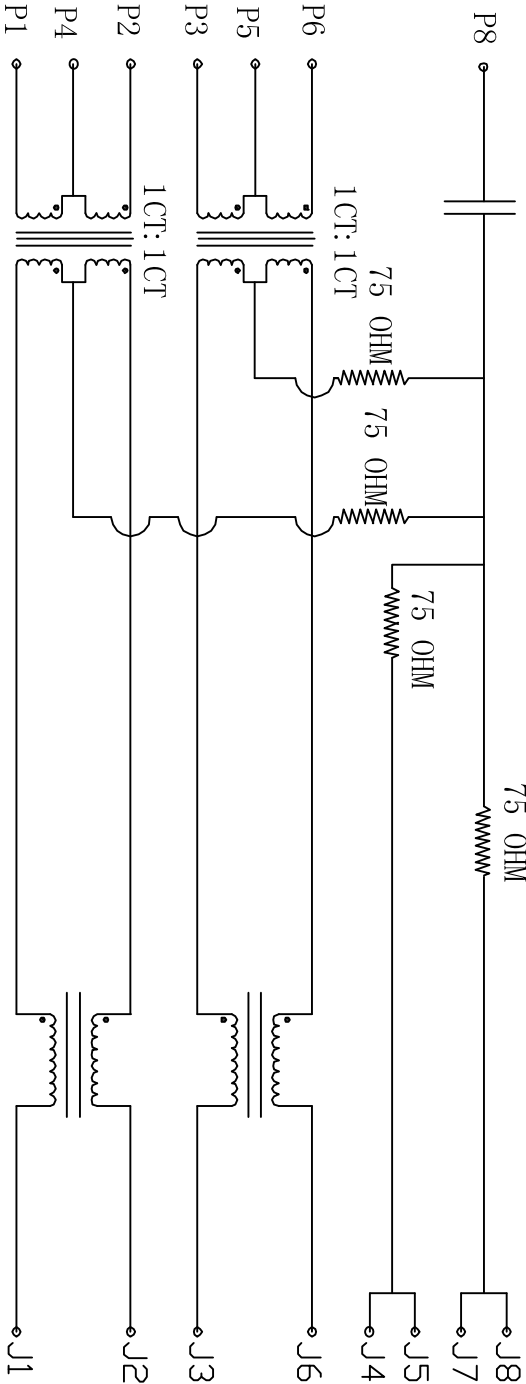
1

Rev	AWO #	Description	Date	Appr
SEE SHT 1 OF 2 FOR REVISION				

APPROVED: _____

DATE: _____ TITLE: _____

D CAP 1000pF 2KV



ELECTRICAL SPECIFICATIONS

- Turns Ratio: (P1 ~ P2) : (J1 ~ J2) 1:1 ±3% (P3 ~ P6) : (J3 ~ J6) 1:1 ±3%
- Inductance: (P1 ~ P2) AND (P3 ~ P6) 350uH min. @ 0.1V, 100KHz, 8mA DC Bias
- Leakage Inductance: P1 ~ P2 (with J1 and J2 Short): 0.35uH Max. @ 1 MHz P3 ~ P6 (with J3 and J6 Short): 0.35uH Max. @ 1 MHz
- Interwinding Capacitor: (P1 ~ P2) : (J1 ~ J2): 35pF max. @ 1MHz (P3 ~ P6) : (J3 ~ J6): 35pF max @ 1MHz
- DC Resistance: (J1 ~ J2) : (J3 ~ J6): 1.2 Ohms Max.
- Return Loss: 1 to 30MHz: -18dB min 30 to 60MHz: -12dB min 60 to 80MHz: -(18-20log(f/30))dB Min (Where f is in MHz)
- Dielectric Withstanding: (P1~P2) : (J1~J2): 1500VAC or 2250VDC (P3~P6) : (J3~J6): 1500VAC or 2250VDC
- Insertion Loss: 1MHz TO 100MHz : -1.2dB Max.
- Cross Talk: 1MHz to 100MHz: -30dB min.
- Common to Common mode Attenuation 1MHz to 100MHz: -30dB min.

A

B

C

D

A

B

C

D

ADAM TECH

909 Rahway Avenue, Union, NJ 07083
Phone: 908-687-5000 Fax: 908-687-5710

MODULAR JACK GANGED, 1 PORT, 8P8C
W/ LED1 GREEN, LED 2 YELLOW

UNLESS OTHERWISE SPECIFIED ALL DIMENSIONS ARE INCHES [MM] TOLERANCES: EXCEPT AS NOTED				TITLE			
INCHES .X ± .10 .XX ± .020 .XXX ± .015				HOLES Ø.X ± .10 Ø.XX ± .015 Ø.XXX ± .010			
APPROVALS				DATE			
DRAWN	HR	4/22/15		SIZE PART NO.			
CHECKED	LL	4/22/15		MTJ-88TX1-FSD-PG-D1LH-M4C			
APPROVED				REV.			
REF: S0006C				SCALE: NTS SHEET 2 OF 2			

ADAM TECH	
909 Rahway Avenue, Union, NJ 07083	
Phone: 908-687-5000 Fax: 908-687-5710	
MODULAR JACK GANGED, 1 PORT, 8P8C	
W/ LED1 GREEN, LED 2 YELLOW	

6

5

4

3

2

1

Mouser Electronics

Authorized Distributor

Click to View Pricing, Inventory, Delivery & Lifecycle Information:

[Adam Tech:](#)

[MTJ-88TX1-FSD-PG-D1LH-M4C](#)