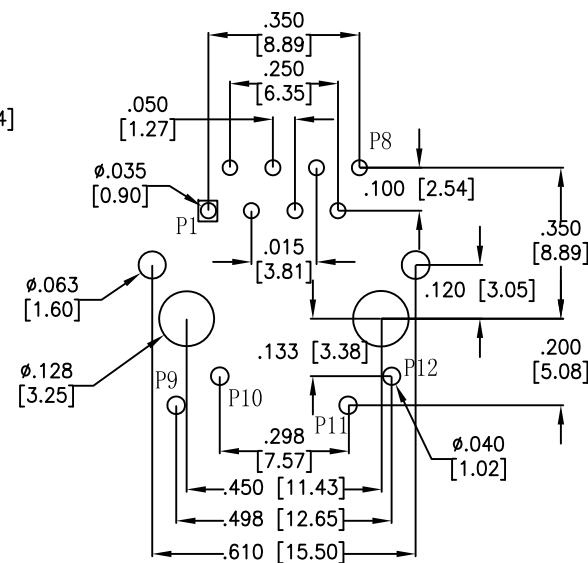
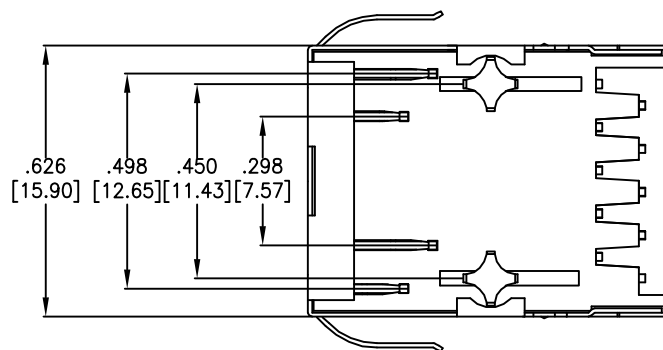
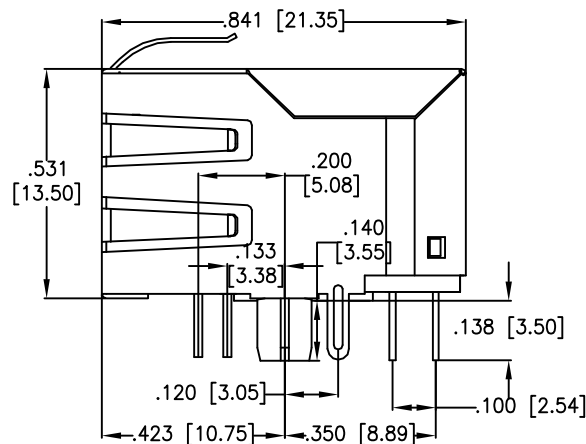
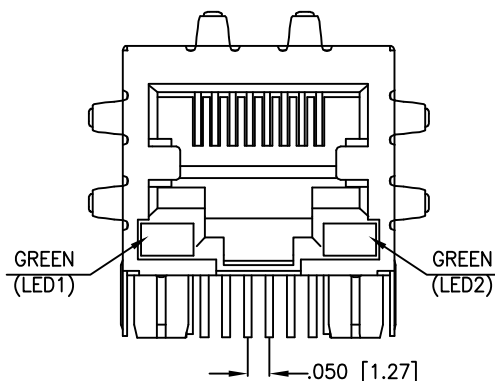


APPROVED: _____

DATE: _____ TITLE: _____

Rev	AWO #	Description	Date	Appr
-		RELEASED	11/21/12	



RECOMMENDED PCB LAYOUT
(COMPONENT SIDE)

SPECIFICATIONS:

Material:

Insulator: PBT, glass reinforced, rated UL 94V-0

Insulator color: Black

Contacts: Copper Alloy

Shield: Copper Alloy, Nickel plated

Plating:

Round contact

Gold over Nickel underplate overall

Flat contact

Gold over Nickel underplate on contact area,

Tin over Nickel underplate on solder tails

(See chart for thickness)

Electrical:

Operating voltage: 150 VAC max

Contact Resistance: 20 mohms max

Insulation resistance: 500 Mohms min

Dielectric withstanding voltage: 1500 VAC for 1 minute

Temperature Rating:

Operating temperature: 0°C to +70°C

Environmental:

Lead free, RoHS compliant.

X	PLATING
0	15 µin Gold
1	30 µin Gold
2	50 µin Gold

UNLESS OTHERWISE SPECIFIED
ALL DIMENSIONS ARE INCHES [MM]
TOLERANCES: EXCEPT AS NOTED
INCHES HOLES
.X ± .10 Ø.X ± .10
.XX ± .020 Ø.XX ± .015
.XXX ± .015 Ø.XXX ± .010

APPROVALS		DATE
DRAWN	AY	11/21/12
CHECKED	CC	11/21/12
APPROVED		

ADAM TECH

909 Rahway Avenue, Union, NJ 07083

Phone: 908-687-5000 Fax: 908-687-5710

TITLE
MODULAR JACK GANGED, 1 PORT, 8P8C
W/LED1 GREEN, LED2 GREEN

SIZE	PART NO.	REV.
X	MTJ-88TX1-FSD-PG-D1LD-M4	-
REF:	S00005C	SCALE: NTS
SHEET 1 OF 2		

6

5

4

3

2

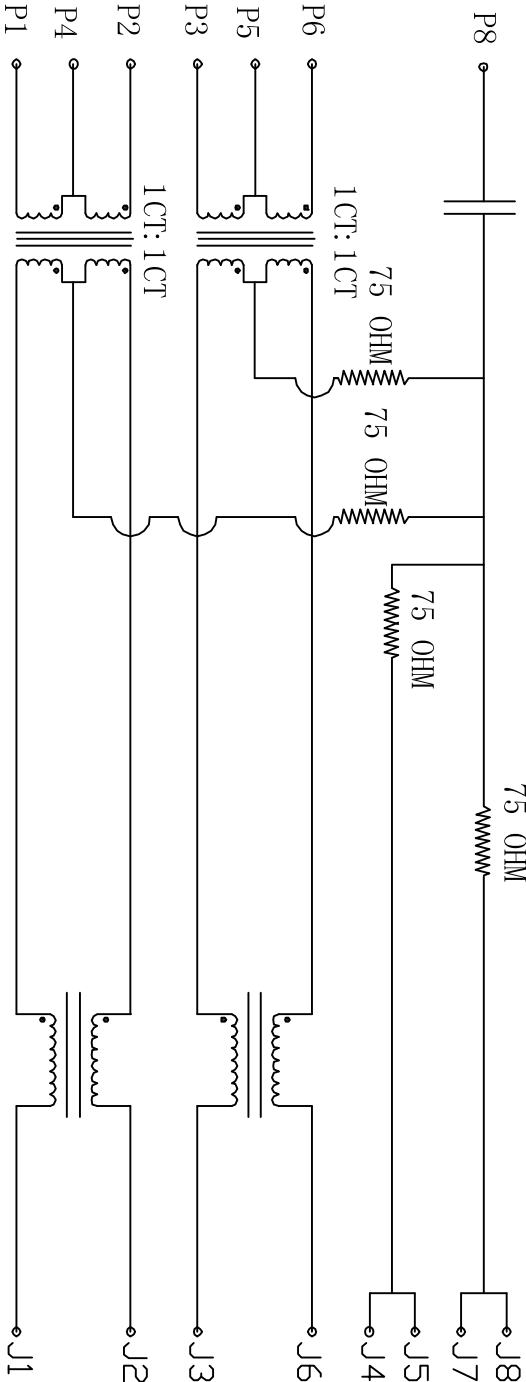
1

Rev	AWO #	Description	Date	Appr
SEE SHT 1 OF 2 FOR REVISION				

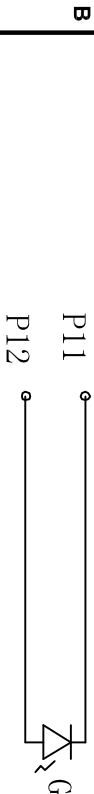
APPROVED: _____

DATE: _____ TITLE: _____

D CAP 1000pF 2KV



C



B

ELECTRICAL SPECIFICATIONS

- Turns Ratio: (P1 ~ P2) : (J1 ~ J2) 1:1 ±3%
(P3 ~ P6) : (J3 ~ J6) 1:1 ±3%
- Inductance: (P1 ~ P2) 350uH min. @ 0.1V, 100KHZ, 8mA DC Bias
(P3 ~ P6) 350uH min. @ 0.1V, 100KHZ, 8mA DC Bias
- Leakage Inductance: P1 ~ P2 (with J1 and J2 Short): 0.35uH Max. @ 1 MHZ
P3 ~ P6 (with J3 and J6 Short): 0.35uH Max. @ 1 MHZ
- Interwinding Capacitor: (P1 ~ P2) : (J1 ~ J2): 35pF max. @ 1mhz
(P3 ~ P6) : (J3 ~ J6): 35pF max @ 1mhz
- DC Resistance: (J1 ~ J2) : (J3 ~ J6): 1.2 Ohms Max.
- Return Loss: 1MHZ to 30MHZ: -18dB min
30MHZ to 60MHZ: -12dB min
60MHZ to 80MHZ: -18dB min
- Dielectric Withstanding: (P1~P2): 1500VAC or 2250VDC
(P3~P6) : (J3~J6): 1500VAC or 2250VDC
- Insertion Loss: 1MHZ TO 100MHZ : -1.2dB Max.
- Cross Talk: 1MHZ to 100MHZ : -30dB min.
- Common to Common mode Attenuation 1MHZ to 100MHZ: -30dB min.

A

UNLESS OTHERWISE SPECIFIED ALL DIMENSIONS ARE IN INCHES [MM] TOLERANCES: EXCEPT AS NOTED		ADAM TECH	
INCHES		909 Rahway Avenue, Union, NJ 07083	
HOLES		Phone: 908-687-5000 Fax: 908-687-5710	
.X ± .10		MODULAR JACK GANGED, 1 PORT, 8P8C	
.XX ± .020		W/ LED1 GREEN, LED 2 GREEN	
.XXX ± .015		TITLE	
APPROVALS		DATE	
DRAWN		AY	
CHECKED		CC	
APPROVED		11/21/12	

A

6

5

4

3

2

1

DRAWN		AY		11/21/12	
CHECKED		CC		11/21/12	
APPROVED		X		11/21/12	
REF: S0005C		SCALE: NTS		SHEET 2 OF 2	

Mouser Electronics

Authorized Distributor

Click to View Pricing, Inventory, Delivery & Lifecycle Information:

[Adam Tech:](#)

[MTJ-88TX1-FSD-PG-D1LD-M4](#)