

6

5

4

3

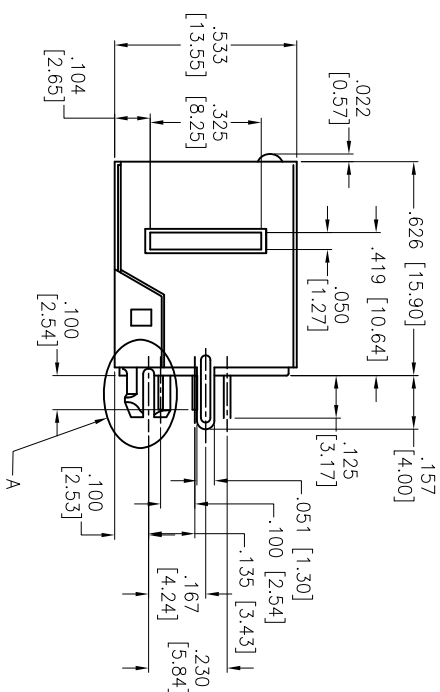
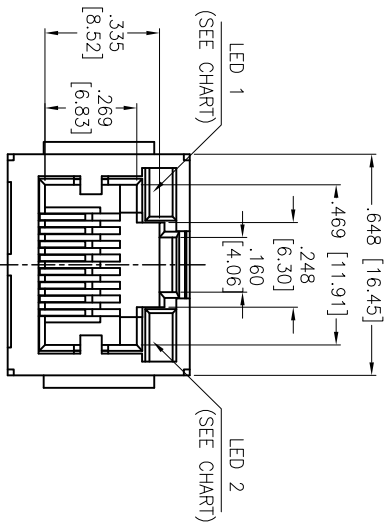
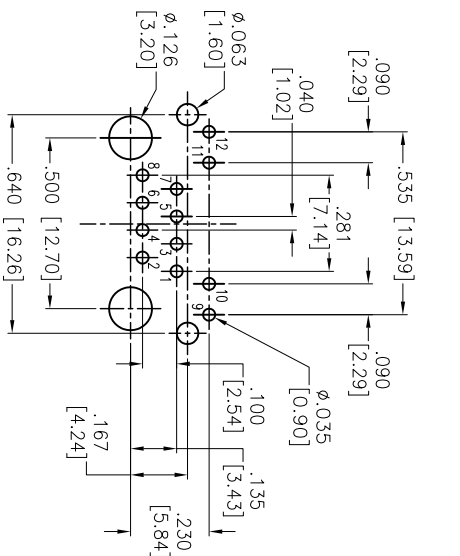
2

1

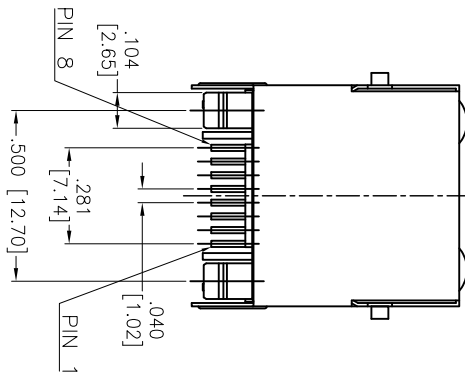
APPROVED: _____

DATE: _____ TITLE: _____

Rev	AWO #	Description	Date	Appr
-		RELEASED	12/19/13	
A		UPDATE DRAWING	4/11/16	AV/CH



RECOMMENDED PCB LAYOUT



Part Number	LED 1 Color	LED 2 Color
MTJ-88DX1-FSQ-LD	Green	Green
MTJ-88DX1-FSQ-LG	Yellow	Green
MTJ-88DX1-FSQ-LH	Green	Yellow
MTJ-88DX1-FSQ-LP	Yellow/Green	Yellow/Green
MTJ-88DX1-FSQ-LV	Green	Yellow/Green
MTJ-88DX1-FSQ-L16	Green/Yellow	Green/Yellow

SPECIFICATIONS:

Material:

Insulator: PA46, Glass reinforced, rated UL 94V-0

Insulator color: Black

Contacts: Phosphor Bronze

Shell: Brass, Nickel Plated

LED solder tail: Steel, Tin plated

Plating:

Round contact

Gold over Nickel underplate overall

Flat contact

Gold over Nickel underplate on contact area,

Tin over Copper underplate on solder tails

Electrical:

Voltage rating: 150 VAC max

Current rating: 1.5 Amps max

Contact resistance: 20 mohms max

Insulation resistance: 500 Mohms min @ 500 VDC

Dielectric withstanding voltage: 1,500 VRMS for 1 minute

Temperature Rating:

Operating temperature: -40°C to +85°C

Environmental:

Lead free, RoHS compliant.



ADAM TECH

909 Railway Avenue, Union, NJ 07083

Phone: 908-687-5000 Fax: 908-687-5710

MODULAR TELEPHONE JACK, 8P9C,

W/LEDS

UNLESS OTHERWISE SPECIFIED ALL DIMENSIONS ARE INCHES [MM] TOLERANCES: EXCEPT AS NOTED INCHES Holes				DATE			
.X	± .10	ØX	± .10	.XXX	± .015	ØXXX	± .010
.XX	± .020	ØXX	± .015	.XXX	± .015	ØXXX	± .010
.XXX	± .015	ØXXX	± .010	.XXX	± .015	ØXXX	± .010
APPROVALS				DATE			
DRAWN	HR	12/19/13	SIZE	PART NO.	REV.		
CHECKED	GC	12/19/13	X	MTJ-88DX1-FSQ-LX	A		
APPROVED			REF:	S00065T	SCALE:	NIS	SHEET 1 OF 1

Mouser Electronics

Authorized Distributor

Click to View Pricing, Inventory, Delivery & Lifecycle Information:

[Adam Tech:](#)

[MTJ-88ARX1-LH](#)