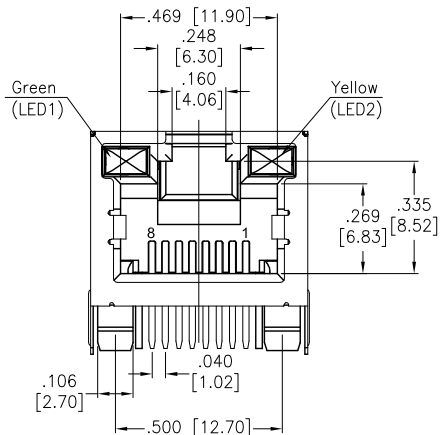
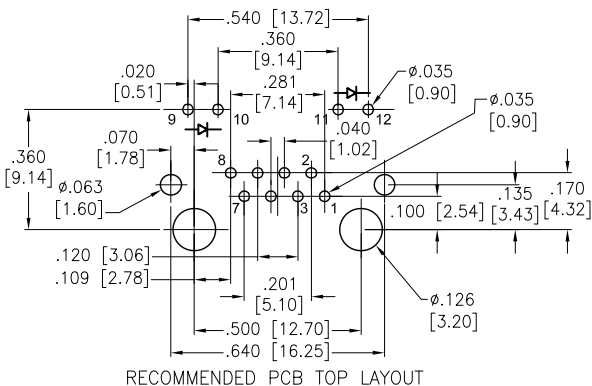
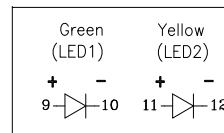
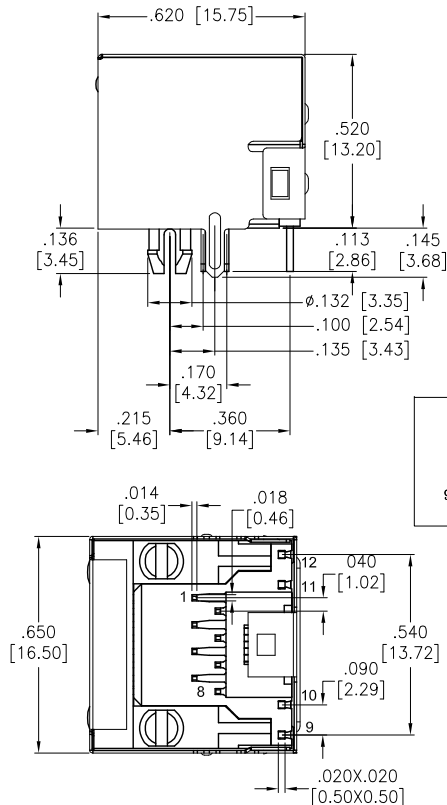


APPROVED: _____

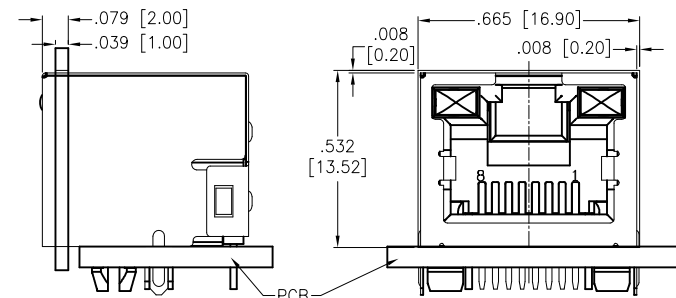
DATE: _____ TITLE: _____



X	PLATING
0	15 µin Gold
1	30 µin Gold
2	50 µin Gold
6	6 µin Gold



RECOMMENDED PCB TOP LAYOUT



RECOMMENDED PANEL CUTOUT AND JACK LOCATION

SPECIFICATIONS:

Material:
Insulator: PBT, glass reinforced, rated UL 94V-0
Insulator color: Black
Contacts: Phosphor Bronze
Shield: Brass, Nickel plated
Contacts Plating:
Round contact
Gold over Nickel underplate overall
Flat contact
Gold over Nickel underplate on contact area,
Tin over Nickel underplate on solder tails
(See chart for thickness)

Electrical:

Voltage rating: 150 VAC rms
Current rating: 1.5 Amps max
Contact resistance: 20 mohms max. initial
Insulation resistance: 1000 Mohms min @ 500 VDC
Dielectric withstanding voltage:
Contact to Contact: 1,000 VDC or AC Peak for 1 minute
Contact to Screen and Test panel: 1,500 VDC or AC Peak for 1 minute

Temperature Rating:

Operating temperature: -40°C to +85°C
Environmental:
Lead free, RoHS compliant.



Rev	AWO #	Description	Date	Appr
-		Released	8/4/06	
A		Added LED CHART	9/3/10	SS
B		REDRAWN	11/15/11	
C		ADDED TOP VIEW TO PCB LAYOUT	12/15/11	
D		ADDED PANEL CUTOUT AND JACK LOCATION	8/14/12	
E		REVISED HEIGHT DIMENSION	8/21/12	
F		UPDATE SHAPE	9/11/14	AY/NP
G		UPDATE SPEC.	3/13/15	AY/CH
H		UPDATE SPEC.	4/13/15	HR/LW
I		UPDATE SPEC.	6/17/16	HR/CH
J		ADDED LED POLARITY	7/8/20	SS

UNLESS OTHERWISE SPECIFIED ALL DIMENSIONS ARE MM [INCHES] TOLERANCES: EXCEPT AS NOTED		ADAM TECH 909 Rahway Avenue, Union, NJ 07083 Phone: 908-687-5000 Fax: 908-687-0214	
.X ± .10 [2.54]	Ø.X ± .10 [2.54]	TITLE MODULAR TELEPHONE JACK, R/A, 8P8C W/ LED1 GREEN, LED2 YELLOW	
.XX ± .020 [.51]	Ø.XX ± .015 [.38]	SIZE X	PART NO. MTJ-88ARX1-FSM-LH
.XXX ± .015 [.38]	Ø.XXX ± .010 [.25]	REV. J	REF: S00005C
APPROVALS DRAWN SLS		DATE 8/4/06	
CHECKED		SCALE: NTS	
APPROVED		SHEET 1 OF 1	

Mouser Electronics

Authorized Distributor

Click to View Pricing, Inventory, Delivery & Lifecycle Information:

[Adam Tech:](#)

[MTJ-88ARX1-FSM-LH](#)