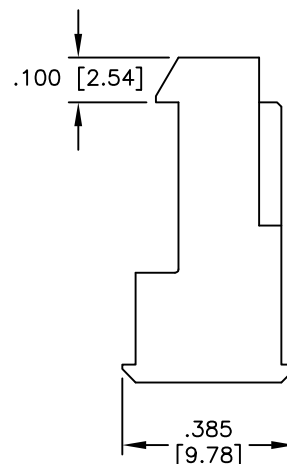
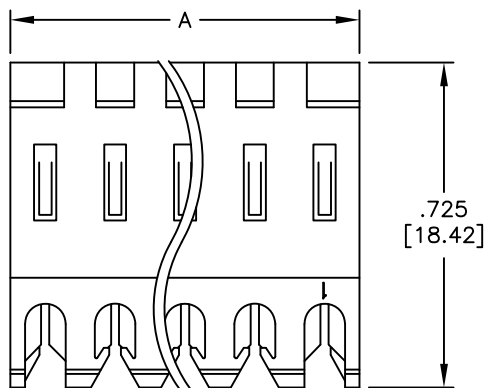
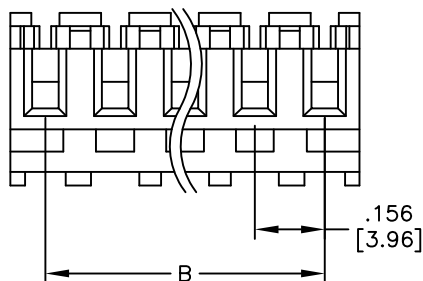


APPROVED: \_\_\_\_\_  
 DATE: \_\_\_\_\_ TITLE: \_\_\_\_\_

Rev	AWO #	Description	Date	Appr
-		RELEASED	2/21/06	
A		REDRAWN	1/19/10	
B		ADDED MAX WIRE INSULATION O.D.	10/1/19	



.090" [2.28mm] MAX OUTER INSULATION DIA.

PART NUMBER	WIRE SIZE	COLOR
MTD-B-XX-A-1	18 AWG	ORANGE
MTD-B-XX-B-1	20 AWG	YELLOW
MTD-B-XX-C-1	22 AWG	RED
MTD-B-XX-D-1	24 AWG	WHITE
MTD-B-XX-E-1	26 AWG	BLUE

#### SPECIFICATIONS:

Material:  
 Insulator: Nylon 66, rated UL 94V-2

Insulator color: (See chart)

Contacts: Phosphor Bronze

Plating:

Tin over Copper underplate overall

Electrical:

Operating voltage: 250 VAC max.

Current rating: 7 Amps max.

Contact resistance: 10 mohms max. initial

Insulation resistance: 1,000 Mohms min.

Dielectric withstanding voltage: 1,500 VAC for 1 minute

Temperature Rating:

Operating temperature: -40°C to +105°C

Environmental:

Lead free, RoHS compliant



Positions: 2 thru 18

A = .156 [3.96] x No. of Positions

B = .156 [3.96] x No. of Spaces

UNLESS OTHERWISE SPECIFIED ALL DIMENSIONS ARE INCHES [MM] TOLERANCES: EXCEPT AS NOTED INCHES HOLES .X ± .10 Ø.X ± .10 .XX ± .020 Ø.XX ± .015 .XXX ± .015 Ø.XXX ± .010		<b>ADAM TECH</b> 909 Rahway Avenue, Union, NJ 07083 Phone: 908-687-5000 Fax: 908-687-5710	
APPROVALS DRAWN SS 2/21/06 CHECKED APPROVED		TITLE IDC MASS TERMINATION HOUSING, .156" [3.96] SPACING, OPEN END FEED THROUGH	
SIZE X		PART NO. MTD-B-XX-X-1	
REF: S00004T		SCALE: NTS	
SHEET 1 OF 1		REV. B	

# Mouser Electronics

Authorized Distributor

Click to View Pricing, Inventory, Delivery & Lifecycle Information:

[Adam Tech:](#)

[MTD-B-05-B-1](#) [MTD-B-06-A-1](#) [MTD-B-05-C-1](#) [MTD-B-04-B-1](#) [MTD-B-07-B-1](#) [MTD-B-10-B-1](#) [MTD-B-02-B-1](#) [MTD-B-07-A-1](#) [MTD-B-08-C-1](#) [MTD-B-09-C-1](#) [MTD-B-02-C-1](#) [MTD-B-08-A-1](#) [MTD-B-04-C-1](#) [MTD-B-07-C-1](#) [MTD-B-10-C-1](#) [MTD-B-10-A-1](#) [MTD-B-08-B-1](#) [MTD-B-05-A-1](#) [MTD-B-06-B-1](#) [MTD-B-02-A-1](#) [MTD-B-06-C-1](#) [MTD-B-03-B-1](#) [MTD-B-09-A-1](#) [MTD-B-03-A-1](#) [MTD-B-03-C-1](#) [MTD-B-04-A-1](#) [MTD-B-09-B-1](#)