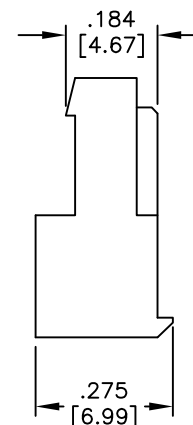
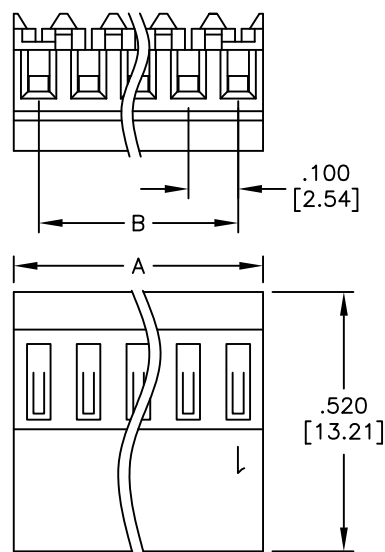


APPROVED: _____
DATE: _____ TITLE: _____

Rev	AWO #	Description	Date	Appr
-		RELEASED	4/12/05	
A		CORRECTION ON FRONT VIEW	01/25/07	
B		REDRAWN	8/21/09	
C		UPDATE SPEC.	10/25/19	AY/KC



PART NUMBER	Wire Size	Insulator Color	Contact resistance
MTD-A-XX-C-2	22 AWG	RED	10mΩ Max
MTD-A-XX-D-2	24 AWG	WHITE	15mΩ Max
MTD-A-XX-E-2	26 AWG	BLUE	20mΩ Max
MTD-A-XX-F-2	28 AWG	GREEN	30mΩ Max

SPECIFICATIONS:

Material:

Insulator: Nylon 66, rated UL 94V-2

Insulator color: See chart

Contacts: Phosphor Bronze

Plating:

Tin over Copper underplate overall

Electrical:

Voltage rating: 250 VAC/DC max.

Current rating: 3A AC/DC.

Contact resistance: See chart.

Insulation resistance: 1000 Mohms min.

Dielectric withstanding voltage: 1500 VAC for 1 minute

Temperature Rating:

Operating temperature: -40°C to +105°C

Environmental:

Lead free, RoHS compliant



Positions: 2 thru 24

A = .100 [2.54] x No. of Positions

B = .100 [2.54] x No. of Spaces

UNLESS OTHERWISE SPECIFIED
ALL DIMENSIONS ARE INCHES [MM]
TOLERANCES: EXCEPT AS NOTED
INCHES HOLES
.X ± .10 Ø.X ± .10
.XX ± .020 Ø.XX ± .015
.XXX ± .015 Ø.XXX ± .010

APPROVALS		DATE
DRAWN	SS	4/12/05
CHECKED		
APPROVED		

ADAM
TECH
INTERCONNECTS

909 Rahway Avenue,
Union, NJ 07083
Phone: 908-687-5000
Fax: 908-687-5710

TITLE			
IDC MASS TERMINATION HOUSING .100 [2.54] SPACING, CLOSED END			
SIZE	PART NO.	REV.	
X	MTD-A-XX-X-2	C	
REF: S00004T	SCALE: NTS	SHEET 1 OF 1	

Mouser Electronics

Authorized Distributor

Click to View Pricing, Inventory, Delivery & Lifecycle Information:

[Adam Tech:](#)

[MTD-A-02-F-2](#) [MTD-A-05-F-2](#) [MTD-A-07-E-2](#) [MTD-A-02-D-2](#) [MTD-A-07-F-2](#) [MTD-A-06-D-2](#) [MTD-A-03-E-2](#) [MTD-A-06-E-2](#) [MTD-A-10-D-2](#) [MTD-A-02-E-2](#) [MTD-A-08-E-2](#) [MTD-A-10-F-2](#) [MTD-A-03-F-2](#) [MTD-A-04-D-2](#) [MTD-A-09-F-2](#) [MTD-A-08-F-2](#) [MTD-A-09-D-2](#) [MTD-A-08-D-2](#) [MTD-A-05-E-2](#) [MTD-A-03-D-2](#) [MTD-A-06-F-2](#) [MTD-A-07-D-2](#) [MTD-A-04-F-2](#) [MTD-A-10-E-2](#) [MTD-A-05-D-2](#) [MTD-A-04-E-2](#) [MTD-A-09-E-2](#)