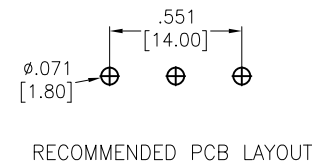
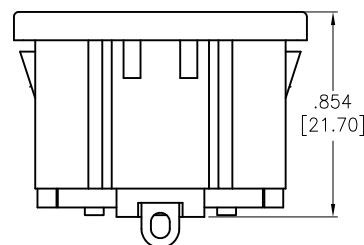
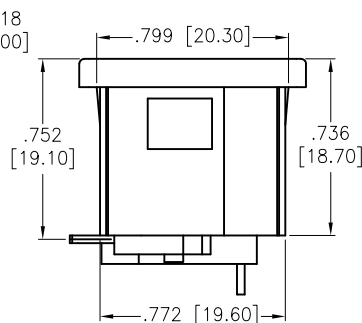
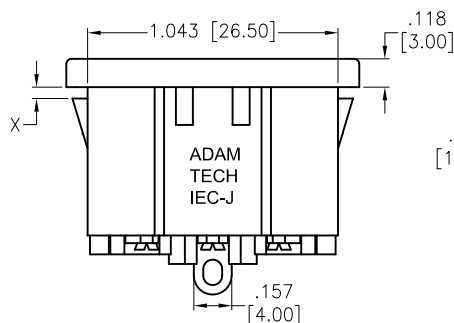
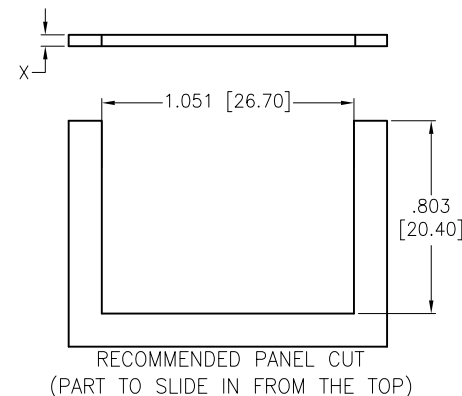
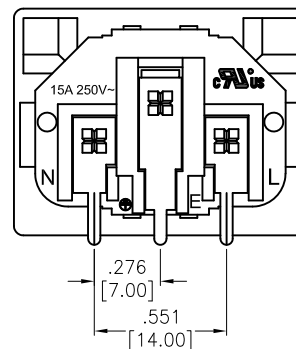
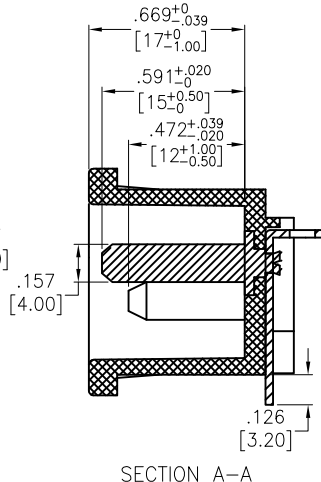
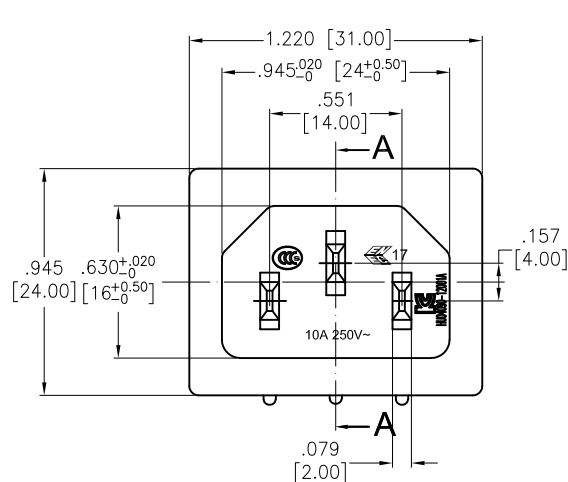


APPROVED: _____
 DATE: _____ TITLE: _____

Rev	AWO #	Description	Date	Appr
-		RELEASED	6/17/05	
A		REDRAWN	11/30/12	
B		UPDATE SPEC.	1/7/21	OW/KC



SPECIFICATIONS:

Material:
 Insulator: Nylon 66, rated UL 94V-0
 Insulator color: Copper Alloy
 Contacts: Copper Alloy
 Plating:
 Nickel over Copper underplate overall
 PCB pins: Tin over Copper underplate
 Electrical:
 Current rating: 15A 250V (C-ULus)
 10A 250V (ENEC & CCC & KC)
 Insulation resistance: 100 Mohms min @ 500 VDC
 Dielectric withstanding voltage: 3,000 VAC for 1 minute
 Environmental:
 Lead free, RoHS compliant



PART NUMBER	DIMENSIONS	
	X	
IEC-J-4-120	.047	[1.20]
IEC-J-4-150	.059	[1.50]
IEC-J-4-200	.079	[2.00]
IEC-J-4-300	.118	[3.00]

<div>UNLESS OTHERWISE SPECIFIED</div> <div>ALL DIMENSIONS ARE INCHES [MM]</div> <div>TOLERANCES: EXCEPT AS NOTED</div> <div>INCHES HOLES</div> <div>.X ±.10 Ø.X ±.10</div> <div>.XX ±.020 Ø.XX ±.015</div> <div>.XXX ±.015 Ø.XXX ±.010</div>		<div>ADAM<div>≡</div>TECH<div>≡</div></div> <div>909 Rahway Avenue, Union, NJ 07083 Phone: 908-687-5000 Fax: 908-687-5710</div>	
APPROVALS		TITLE	
DRAWN	SS	IEC MALE INLET, PANEL MOUNT, RIGHT ANGLE, PCB TAILS	
CHECKED		SIZE X PART NO. IEC-J-4-XXX REV. B	
APPROVED		REF: S00087C SCALE: NTS SHEET 1 OF 1	

Mouser Electronics

Authorized Distributor

Click to View Pricing, Inventory, Delivery & Lifecycle Information:

[Adam Tech:](#)

[IEC-J-4-200](#)