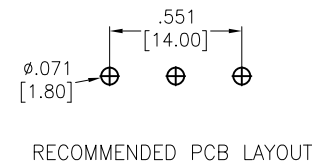
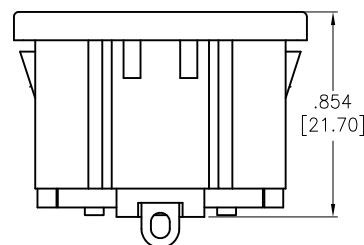
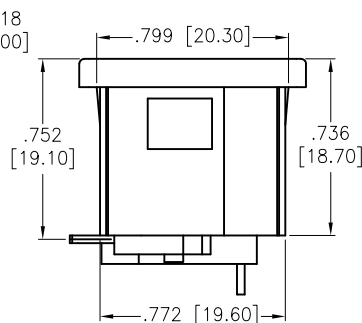
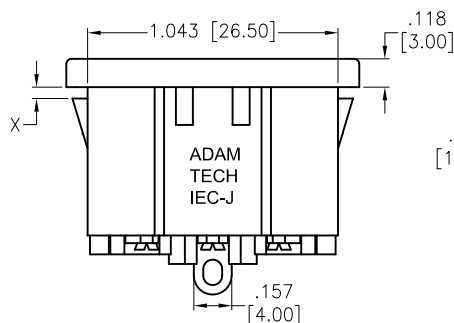
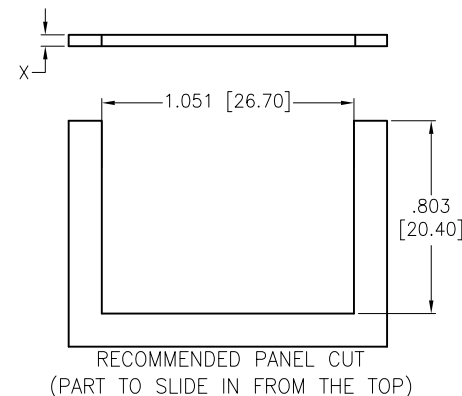
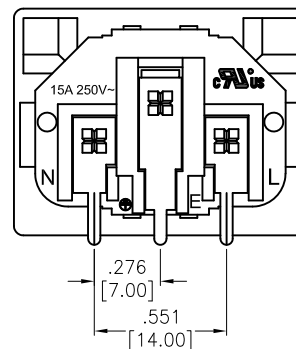
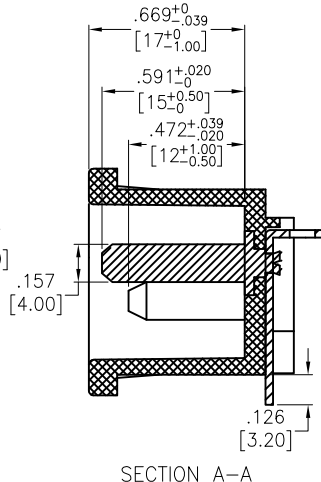
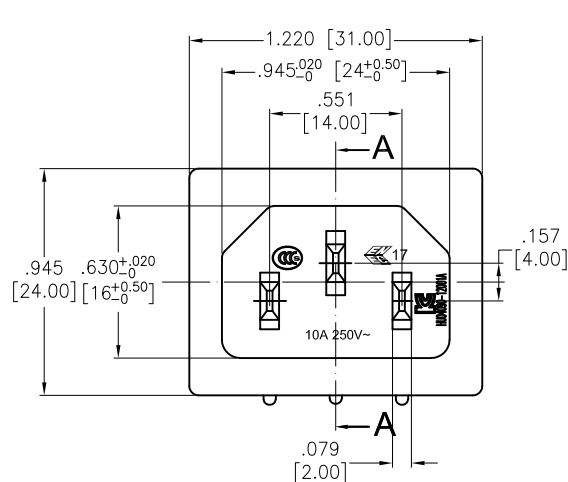


APPROVED: \_\_\_\_\_  
 DATE: \_\_\_\_\_ TITLE: \_\_\_\_\_

Rev	AWO #	Description	Date	Appr
-		RELEASED	6/17/05	
A		REDRAWN	11/30/12	
B		UPDATE SPEC.	1/7/21	OW/KC



#### SPECIFICATIONS:

Material:  
 Insulator: Nylon 66, rated UL 94V-0  
 Insulator color: Copper Alloy  
 Contacts: Copper Alloy  
 Plating:  
 Nickel over Copper underplate overall  
 PCB pins: Tin over Copper underplate  
 Electrical:  
 Current rating: 15A 250V (C-ULus)  
 10A 250V (ENEC & CCC & KC)  
 Insulation resistance: 100 Mohms min @ 500 VDC  
 Dielectric withstanding voltage: 3,000 VAC for 1 minute  
 Environmental:  
 Lead free, RoHS compliant



PART NUMBER	DIMENSIONS	
	X	
IEC-J-4-120	.047	[1.20]
IEC-J-4-150	.059	[1.50]
IEC-J-4-200	.079	[2.00]
IEC-J-4-300	.118	[3.00]

UNLESS OTHERWISE SPECIFIED ALL DIMENSIONS ARE INCHES [MM] TOLERANCES: EXCEPT AS NOTED INCHES                      HOLES .X           ±.10           Ø.X           ±.10 .XX          ±.020          Ø.XX          ±.015 .XXX       ±.015          Ø.XXX       ±.010		<div>ADAM TECH</div> <div>909 Rahway Avenue, Union, NJ 07083 Phone: 908-687-5000 Fax: 908-687-5710</div>	
APPROVALS		TITLE	
DATE		IEC MALE INLET, PANEL MOUNT, RIGHT ANGLE, PCB TAILS	
DRAWN	SS	6/17/05	
CHECKED			
APPROVED			
SIZE X		PART NO. IEC-J-4-XXX	
REF: S00087C		REV. B	
SCALE: NTS		SHEET 1 OF 1	

# Mouser Electronics

Authorized Distributor

Click to View Pricing, Inventory, Delivery & Lifecycle Information:

[Adam Tech:](#)

[IEC-J-4-150](#)