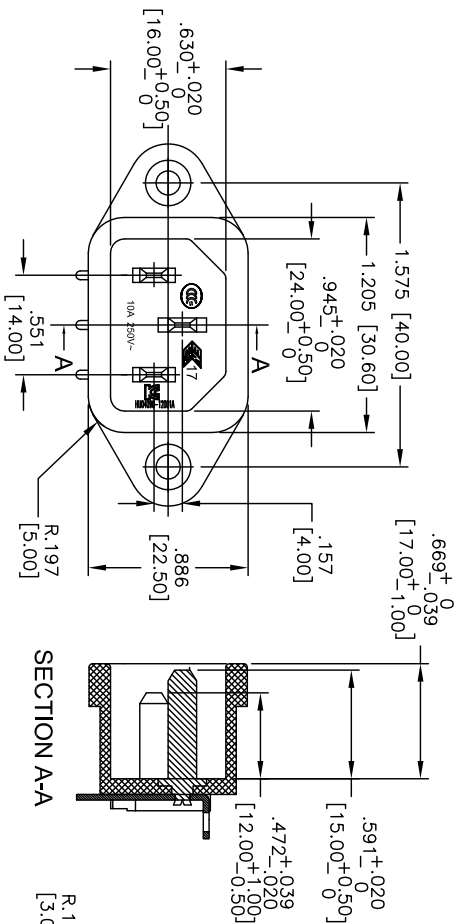
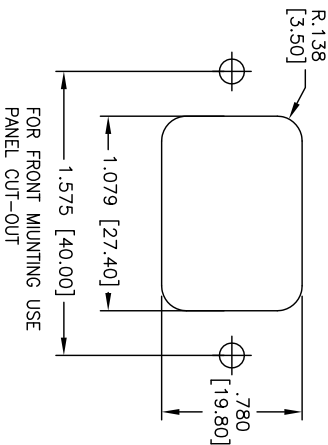
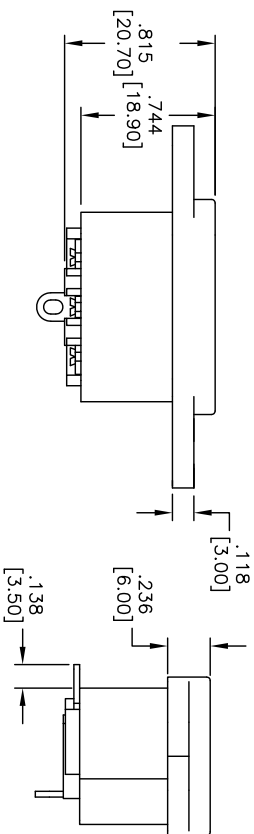
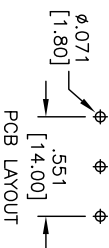
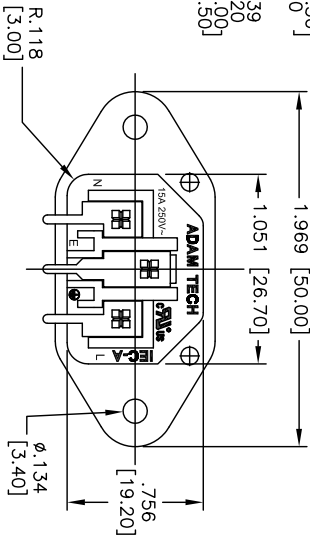


APPROVED: \_\_\_\_\_  
DATE: \_\_\_\_\_ TITLE: \_\_\_\_\_

Rev	AWO #	Description	Date	Appr
-		RELEASED	7/10/07	
A		REDRAWN	7/11/13	



SECTION A-A



FOR FRONT MOUNTING USE  
PANEL CUT-OUT

SPECIFICATIONS:

Material: PBT, rated UL 94V-0  
Insulator color: Black  
Contact: Copper Alloy, Tin Plated  
Pin: Copper Alloy, Nickel Plated  
Electrical:  
Rating: 15A @ 250V C-ULus  
10A @ 250V ENEC & CCC & KC  
Insulation resistance: 100 Mohms min @ 500 VDC  
Dielectric withstanding voltage: 3000 VAC for 1 minute  
Environmental:  
Lead free, RoHS compliant.



**ADAM TECH**

909 Rahway Avenue, Union, NJ 07083  
Phone: 908-687-5000 Fax: 908-687-5710

IEC MALE INLET, FLANGED PANEL MOUNT  
RIGHT ANGLE, PCB TAILS

UNLESS OTHERWISE SPECIFIED ALL DIMENSIONS ARE INCHES [MM] TOLERANCES: EXCEPT AS NOTED				Holes			
INCHES				Holes			
.X				.X			
.XX				.XX			
.XXX				.XXX			
APPROVALS				DATE			
DRAWN				SS			
CHECKED				7/10/07			
APPROVED							
SIZE				PART NO.			
X				IEC-A-4			
REF:				SCALE: NTS			
S00087C				SHEET 1 OF 1			

# Mouser Electronics

Authorized Distributor

Click to View Pricing, Inventory, Delivery & Lifecycle Information:

[Adam Tech:](#)

[IEC-A-4](#)