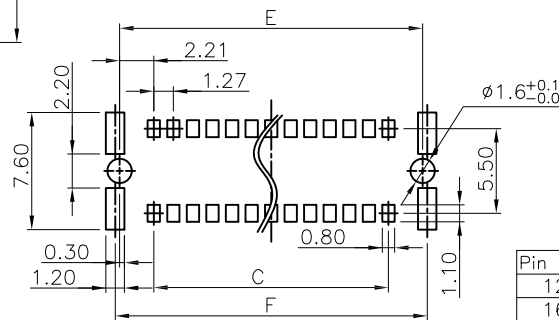
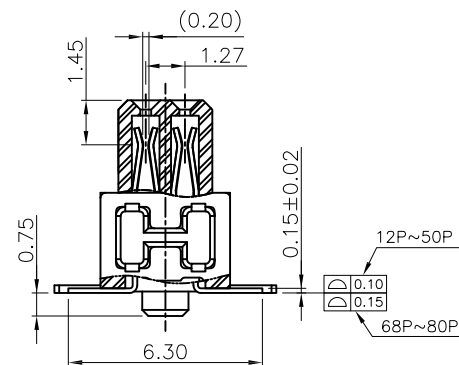
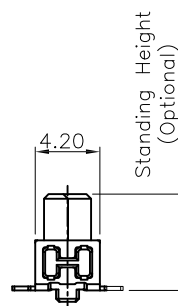
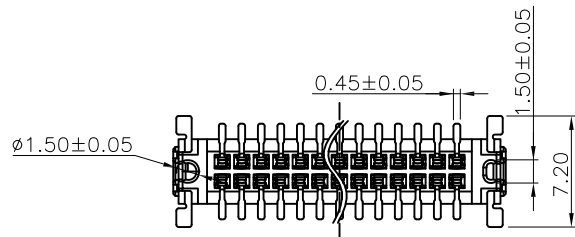
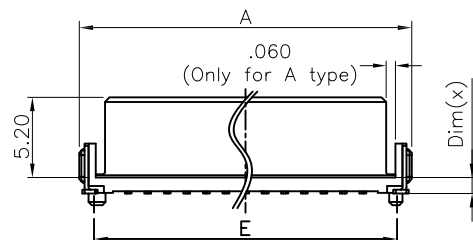
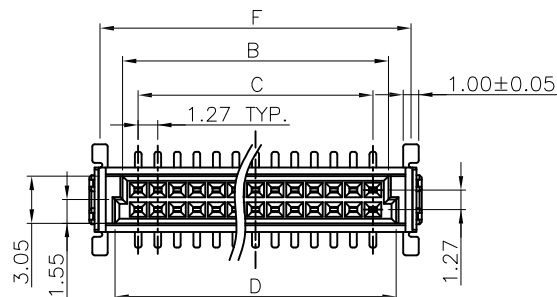


APPROVED: \_\_\_\_\_  
 DATE: \_\_\_\_\_ TITLE: \_\_\_\_\_

Rev	AWO #	Description	Date	Appr
-		RELEASED	3/20/17	
A		UPDATE DRAWING	3/19/20	LH/AC



RECOMMENDED PCB LAYOUT

Pin No.	A	B	C	D	E	F
12	12.70	8.37	6.35	9.37	10.77	11.34
16	15.24	10.91	8.89	11.91	13.31	13.88
20	17.78	13.45	11.43	14.45	15.85	16.42
24	20.32	15.99	13.97	16.99	18.39	18.96
26	21.59	17.26	15.24	18.26	19.66	20.23
30	24.13	19.80	17.78	20.80	22.20	22.77
32	25.40	21.07	19.05	22.07	23.47	24.04
40	30.48	26.15	24.13	27.15	28.55	29.12
50	36.83	32.50	30.48	33.50	34.90	35.47
68	48.26	43.93	41.91	44.93	46.33	46.90
80	55.88	51.55	49.53	52.55	53.95	54.52

#### SPECIFICATIONS:

Material:

Insulator: Hi-temp thermoplastic, rated UL 94V-0

Insulator color: Black

Contacts: Phosphor Bronze

Board Lock: Brass, Tin plated

Plating:

Gold flash over Nickel underplate on contact area,

Tin over Nickel underplate on solder tails

Electrical:

Current rating: 1.2 Amp max

Contact resistance: 25 mohms max

Insulation resistance: 1000 Mohms min

Withstanding voltage: 500 VAC for 1 minute

Temperature Rating:

Operating temperature: -55°C to +125°C

Environmental:

Lead free, RoHS compliant.



PACKAGED ON TAPE & REEL

UNLESS OTHERWISE SPECIFIED  
 ALL DIMENSIONS ARE MILLIMETERS  
 TOLERANCES: EXCEPT AS NOTED  
 MM ANGLE  
 .X ± 0.35  
 .XX ± 0.20  
 .XXX ± 0.10

APPROVALS		DATE
DRAWN	AY	3/20/17
CHECKED	MC	3/20/17
APPROVED		

**ADAM TECH**  
 INTERCONNECTS  
 909 Rahway Avenue,  
 Union, NJ 07083  
 Phone: 908-687-5000  
 Fax: 908-687-5710

TITLE 1.27mm BOARD TO BOARD STACKING CONNECTOR, FEMALE, VERTICAL, SMT TYPE		
SIZE X	PART NO. ESMC-F-XX-SGS-SMT-X-PP-T/R	REV. A
REF: S00242T		SCALE: NTS
		SHEET 1 OF 2

6

5

4

3

2

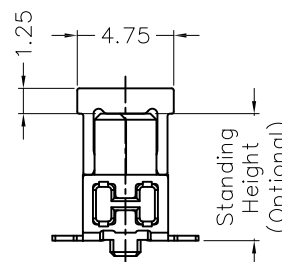
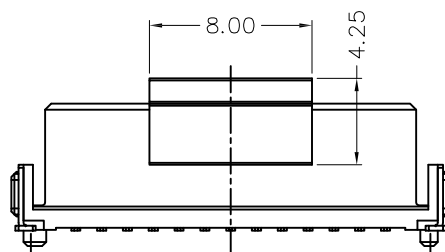
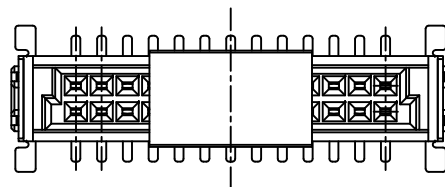
1

APPROVED: \_\_\_\_\_

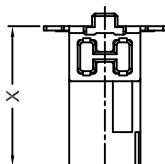
DATE: \_\_\_\_\_ TITLE: \_\_\_\_\_

Rev AWO # Description Date Appr

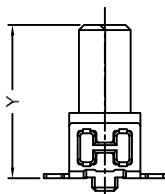
SEE SHT 1 OF 2 FOR REVISION



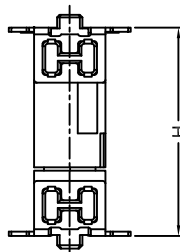
Male Series



Matting →



Female Series



Part No.	Connector Height		Stacking Height
	(Y)Female	(X)Male	H(Matting)
ESMC-F-XX-SGS-SMT-A-PP-T/R	6.25	6.75	8.0
		8.25	9.5
		9.85	11.1
ESMC-F-XX-SGS-SMT-B-PP-T/R	9.05	6.75	10.8
		8.25	12.3
		9.85	13.9
ESMC-F-XX-SGS-SMT-C-PP-T/R	13.65	6.75	15.4
		8.25	16.9
		9.85	18.5

UNLESS OTHERWISE SPECIFIED  
ALL DIMENSIONS ARE MILLIMETERS  
TOLERANCES: EXCEPT AS NOTED  
MM ANGLE  
.X ± 0.35 ± 2°  
.XX ± 0.20  
.XXX ± 0.10

## APPROVALS

DRAWN

AY

## DATE

3/20/17

CHECKED

MC

3/20/17

APPROVED

**ADAM**  
**TECH**  
**INTERCONNECTS**

909 Rahway Avenue,  
Union, NJ 07083  
Phone: 908-687-5000  
Fax: 908-687-5710

TITLE  
1.27mm BOARD TO BOARD STACKING  
CONNECTOR, FEMALE, VERTICAL, SMT TYPE

SIZE

X

PART NO.

ESMC-F-XX-SGS-SMT-X-PP-T/R

REV.

A

REF: S00242T

SCALE: NTS

SHEET 2 OF 2

6

5

4

3

2

1

# Mouser Electronics

Authorized Distributor

Click to View Pricing, Inventory, Delivery & Lifecycle Information:

[Adam Tech:](#)

[ESMC-F-12-SGS-SMT-A-PP-T/R](#) [ESMC-F-68-SGS-SMT-A-PP-T/R](#) [ESMC-F-16-SGS-SMT-A-PP-T/R](#) [ESMC-F-30-SGS-SMT-B-PP-T/R](#) [ESMC-F-40-SGS-SMT-B-PP-T/R](#) [ESMC-F-80-SGS-SMT-B-PP-T/R](#) [ESMC-F-20-SGS-SMT-A-PP-T/R](#) [ESMC-F-16-SGS-SMT-C-PP-T/R](#) [ESMC-F-32-SGS-SMT-B-PP-T/R](#) [ESMC-F-32-SGS-SMT-C-PP-T/R](#) [ESMC-F-50-SGS-SMT-B-PP-T/R](#) [ESMC-F-30-SGS-SMT-A-PP-T/R](#) [ESMC-F-68-SGS-SMT-C-PP-T/R](#) [ESMC-F-16-SGS-SMT-B-PP-T/R](#) [ESMC-F-40-SGS-SMT-A-PP-T/R](#) [ESMC-F-80-SGS-SMT-C-PP-T/R](#) [ESMC-F-20-SGS-SMT-B-PP-T/R](#) [ESMC-F-20-SGS-SMT-C-PP-T/R](#) [ESMC-F-80-SGS-SMT-A-PP-T/R](#) [ESMC-F-12-SGS-SMT-B-PP-T/R](#) [ESMC-F-32-SGS-SMT-A-PP-T/R](#) [ESMC-F-26-SGS-SMT-B-PP-T/R](#) [ESMC-F-50-SGS-SMT-A-PP-T/R](#) [ESMC-F-50-SGS-SMT-C-PP-T/R](#) [ESMC-F-12-SGS-SMT-C-PP-T/R](#) [ESMC-F-30-SGS-SMT-C-PP-T/R](#) [ESMC-F-40-SGS-SMT-C-PP-T/R](#) [ESMC-F-26-SGS-SMT-A-PP-T/R](#) [ESMC-F-26-SGS-SMT-C-PP-T/R](#) [ESMC-F-68-SGS-SMT-B-PP-T/R](#)