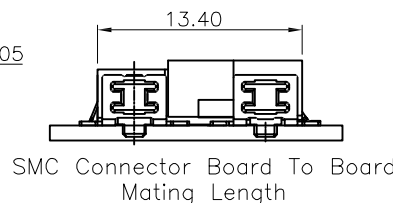
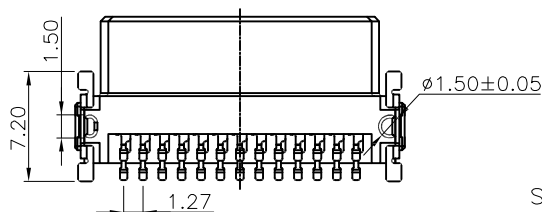
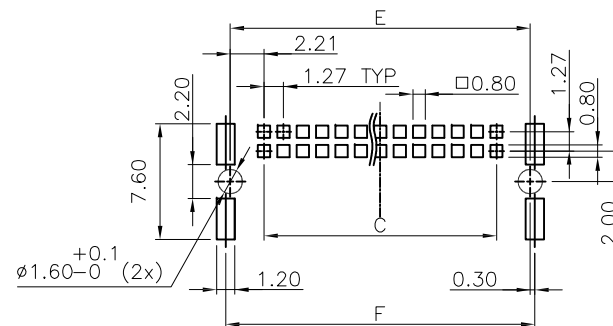
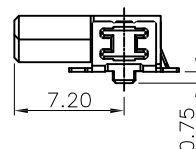
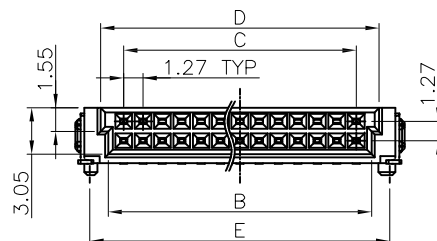
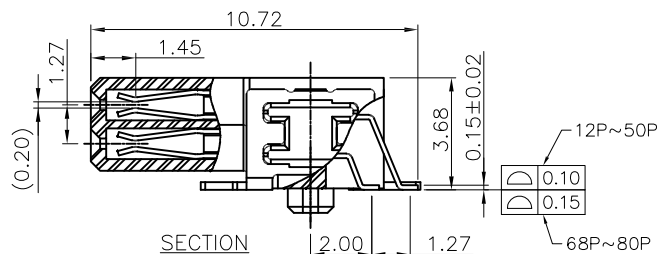
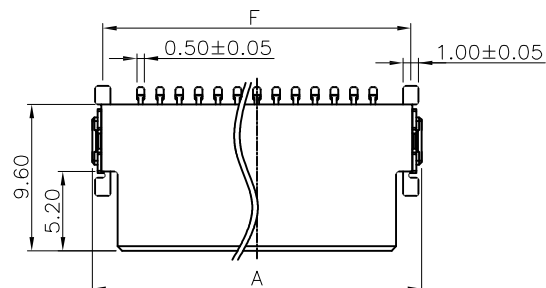


APPROVED: _____
 DATE: _____ TITLE: _____

Rev	AWO #	Description	Date	Appr
-		RELEASED	3/20/17	
A		UPDATE DRAWING	3/18/20	LH/DH



SPECIFICATIONS:

Material:
 Insulator: Hi-temp thermoplastic, rated UL 94V-0
 Insulator color: Black
 Contacts: Phosphor Bronze
 Board Lock: Brass, Tin plated
 Plating:
 Gold flash over Nickel underplate on contact area,
 Tin over Nickel underplate on solder tails
 Electrical:
 Current rating: 1.2 Amp max
 Contact resistance: 25 mohms max
 Insulation resistance: 1000 Mohms min
 Withstanding voltage: 500 VAC for 1 minute
 Temperature Rating:
 Operating temperature: -55°C to +125°C
 Environmental:
 Lead free, RoHS compliant.



PACKAGED ON TAPE & REEL

UNLESS OTHERWISE SPECIFIED ALL DIMENSIONS ARE MILLIMETERS TOLERANCES: EXCEPT AS NOTED MM ANGLE X.X ± 0.35 X.XX ± 0.20 X.XXX ± 0.10		<div>ADAM TECH</div> 909 Rahway Avenue, Union, NJ 07083 Phone: 908-687-5000 Fax: 908-687-5710	
APPROVALS		TITLE	
DRAWN	AY	1.27mm BOARD TO BOARD STACKING CONNECTOR, FEMALE, RIGHT ANGLE, SMT TYPE	
CHECKED	MC	SIZE X PART NO. ESMC-F-XX-SGR-SMT-T/R	
APPROVED		REV. A	
		REF: S00242T	SCALE: NTS
		SHEET 1 OF 1	

Pin No.	A	B	C	D	E	F
12	12.70	8.37	6.35	9.37	10.77	11.34
16	15.24	10.91	8.89	11.91	13.31	13.88
20	17.78	13.45	11.43	14.45	15.85	16.42
26	21.59	17.26	15.24	18.26	19.66	20.23
30	24.13	19.80	17.78	20.80	22.20	22.77
32	25.40	21.07	19.05	22.07	23.47	24.04
40	30.48	26.15	24.13	27.15	28.55	29.12
50	36.83	32.50	30.48	33.50	34.90	35.47
68	48.26	43.93	41.91	44.93	46.33	46.90
80	55.88	51.55	49.53	52.55	53.95	54.52

Mouser Electronics

Authorized Distributor

Click to View Pricing, Inventory, Delivery & Lifecycle Information:

[Adam Tech:](#)

[ESMC-F-68-SGR-SMT-T/R](#) [ESMC-F-32-SGR-SMT-T/R](#) [ESMC-F-26-SGR-SMT-T/R](#) [ESMC-F-50-SGR-SMT-T/R](#)
[ESMC-F-20-SGR-SMT-T/R](#) [ESMC-F-80-SGR-SMT-T/R](#) [ESMC-F-12-SGR-SMT-T/R](#) [ESMC-F-40-SGR-SMT-T/R](#)
[ESMC-F-30-SGR-SMT-T/R](#) [ESMC-F-16-SGR-SMT-T/R](#) [ESMC-F-10-SGR-SMT-T/R](#)