

6

5

4

3

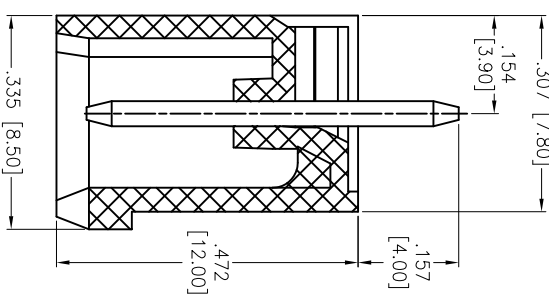
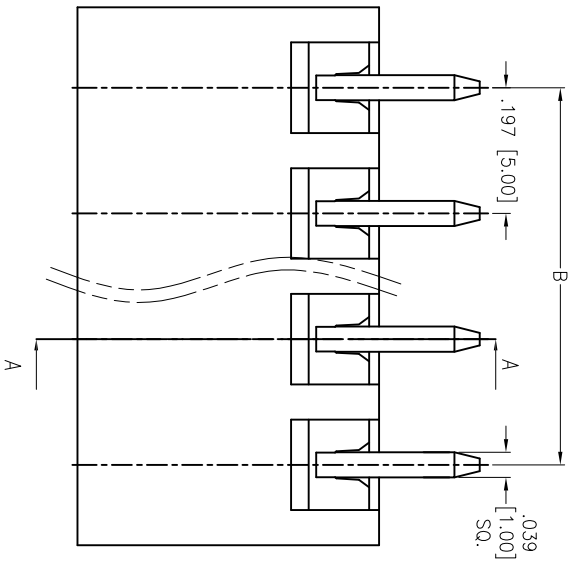
2

1

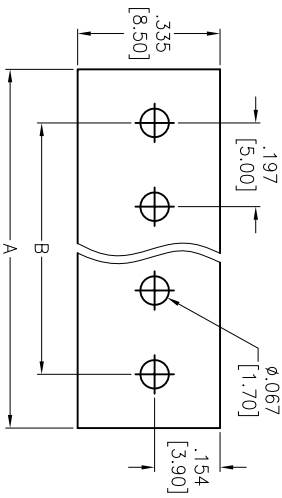
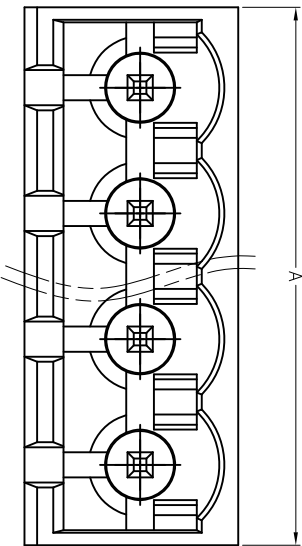
Rev	AWO #	Description	Date	Appr
-		RELEASED	11/24/14	

APPROVED: _____

DATE: _____ TITLE: _____



SECTION A-A



RECOMMENDED PCB LAYOUT

SPECIFICATIONS:

Material: Insulator: PA66, rated UL 94V-0
Insulator color: Green
Contact: Brass, Tin plated.
Electrical:
Operation voltage: 300 VAC max
Current rating: 15 Amps
Contact resistance: 20 mohms max
Insulation resistance: 500 Mohms min @ 500 VDC
Dielectric withstanding voltage: 2,000 VAC for 1 minute
Temperature Rating:
Operating temperature: -40°C to +105°C
Environmental:
Lead free, RoHS compliant.

Positions: 02 thru 24
A = .197 [5.00] x No. of Positions + .055 [1.40]
B = .197 [5.00] x No. of Spaces

ADAM TECH

909 Rahway Avenue, Union, NJ 07083
Phone: 908-687-5000 Fax: 908-687-5710

TERMINAL BLOCK, SOCKETS .197 [5.00] PITCH
VERTICAL, CLOSE TYPE

UNLESS OTHERWISE SPECIFIED ALL DIMENSIONS ARE MM [INCHES] TOLERANCES: EXCEPT AS NOTED INCHES				Holes			
.X	± .10	Ø.X	± .10	.X	± .10	Ø.X	± .10
.XX	± .020	Ø.XX	± .015	.XX	± .015	Ø.XX	± .010
.XXX	± .015	Ø.XXX	± .010	.XXX	± .015	Ø.XXX	± .010
APPROVALS				DATE			
DRAWN	HR	11/24/14		CHECKED	NP	11/24/14	
APPROVED				REF:	S00067C	SCALE: NTS	



A

B

C

D

A

B

C

D

6

5

4

3

2

1

Mouser Electronics

Authorized Distributor

Click to View Pricing, Inventory, Delivery & Lifecycle Information:

[Adam Tech:](#)

[EBPA-02-C-C](#) [EBPA-04-C-C](#) [EBPA-03-C-C](#) [EBPA-05-C-C](#)