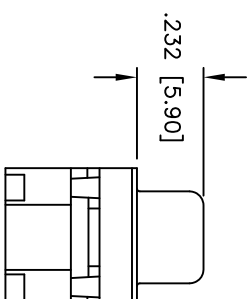
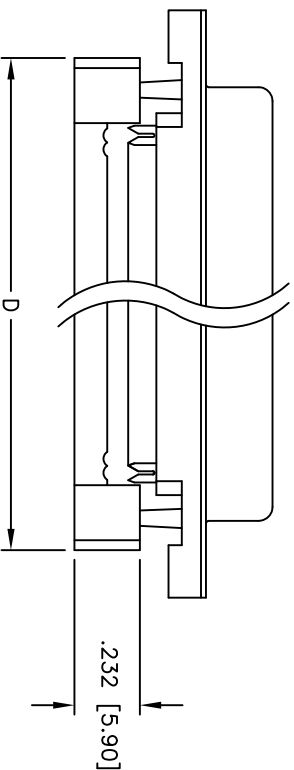
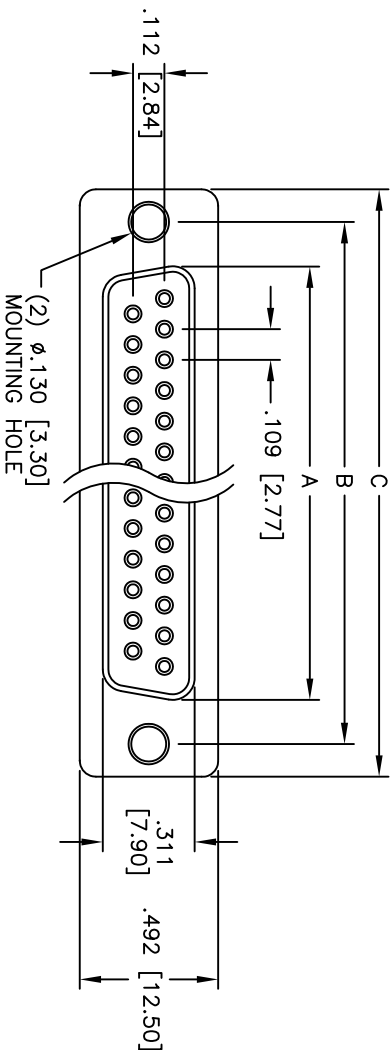


Rev	AWO #	Description	Date	Appr
-		RELEASED	4/25/05	

APPROVED: _____

DATE: _____ TITLE: _____



SPECIFICATIONS:

Material:

Insulator: PBT, glass reinforced, rated UL 94V-0

Insulator color: Black

Contacts: Phosphor Bronze

Shell: Steel, Tin plated

Plating:

Gold flash over Nickel underplate,

Tin over Copper underplate on IDC area

Electrical:

Operating voltage: 250 VAC max

Current rating: 5 Amps max

Contact resistance: 20 mohms max

Insulation resistance: 5,000 Mohms min

Dielectric withstanding voltage: 1,000 VAC for 1 minute

Mechanical:

Recommended cable size: 28-30 AWG

Temperature Rating:

Operating temperature: -65°C to +125°C

Environmental:

Lead free, RoHS compliant

DXXX	NO. OF CONTACTS	DIMENSIONS			
		A	B	C	D
DE09	9	.643 [16.33]	.984 [24.99]	1.213 [30.81]	.883 [22.44]
DA15	15	.971 [24.66]	1.312 [33.32]	1.541 [39.14]	1.213 [30.81]
DB25	25	1.511 [38.38]	1.852 [47.04]	2.088 [53.04]	1.755 [44.57]
DC37	37	2.159 [54.84]	2.500 [63.50]	2.729 [69.32]	2.414 [61.32]

ADAM TECH

909 Railway Avenue, Union, NJ 07083

Phone: 908-687-5000 Fax: 908-687-5710

TITLE

IDC FLAT CABLE D-SUB SOCKET

METAL SHELL, .130 [3.30] MOUNTING HOLES

UNLESS OTHERWISE SPECIFIED ALL DIMENSIONS ARE INCHES [MM] TOLERANCES: EXCEPT AS NOTED		INCHES		HOLES	
.X	± .10	ØX	± .10	ØX	± .10
.XX	± .020	ØXX	± .015	ØXX	± .015
.XXX	± .015	ØXXX	± .010	ØXXX	± .010
APPROVALS		DATE		TITLE	
DRAWN	SS	4/25/05		IDC FLAT CABLE D-SUB SOCKET	
CHECKED				METAL SHELL, .130 [3.30] MOUNTING HOLES	
APPROVED				REV. -	
SIZE		PART NO.		REV.	
X		DXXX-SF-M1		-	
REF:		SCALE: NTS		SHEET 1 OF 1	

ROHS
COMPLIANT

Mouser Electronics

Authorized Distributor

Click to View Pricing, Inventory, Delivery & Lifecycle Information:

[Adam Tech:](#)

[DE09-SF-M1](#) [DC37-SF-M1](#) [DB25-SF-M1](#) [DA15-SF-M1](#)