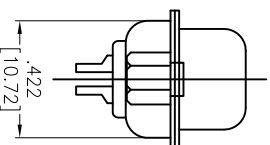
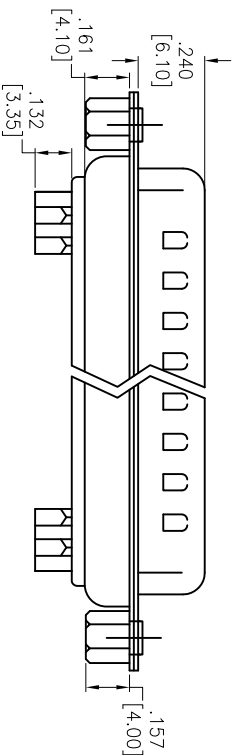
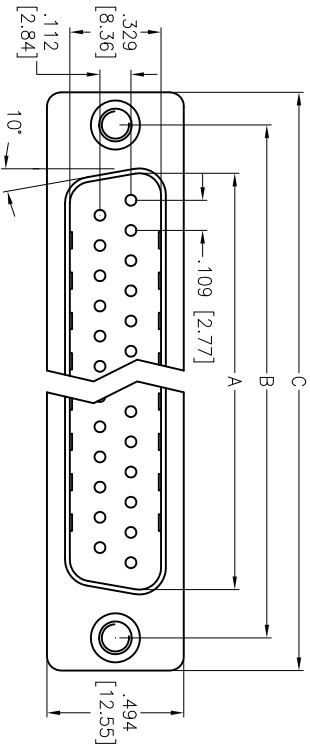


| Rev | AWO # | Description | Date | Appr |
|-----|-------|--------------|----------|------|
| - | | RELEASED | 4/28/05 | |
| A | | REDRAWN | 01/28/13 | |
| B | | REVISED DIM. | 2/26/14 | AY |

APPROVED: _____

DATE: _____ TITLE: _____



| DXXX | NO. OF CONTACTS | DIMENSIONS | | |
|------|-----------------|---------------|---------------|---------------|
| | | A | B | C |
| DE09 | 9 | .666 [16.92] | .984 [24.99] | 1.213 [30.81] |
| DA15 | 15 | .994 [25.25] | 1.312 [33.32] | 1.541 [39.14] |
| DB25 | 25 | 1.534 [38.96] | 1.852 [47.04] | 2.088 [53.04] |
| DC37 | 37 | 2.182 [55.42] | 2.500 [63.50] | 2.729 [69.32] |

ADAM TECH

909 Railway Avenue, Union, NJ 07083
Phone: 908-687-5000 Fax: 908-687-5710

TITLE
D-SUB PLUG, SOLDER CUP
RIVETED #4-40 CLINCH NUTS

| | | | | | |
|---|-----------|---------|--------------|------------|--------------|
| UNLESS OTHERWISE SPECIFIED ALL DIMENSIONS ARE INCHES [MM] TOLERANCES: EXCEPT AS NOTED INCHES .X ± .10 ØXX ± .10 .XX ± .020 ØXXX ± .015 .XXX ± .015 ØXXXX ± .010 | APPROVALS | DATE | SIZE | PART NO. | REV. |
| DRAWN | SS | 4/28/05 | X | DXXX-PD-SL | B |
| CHECKED | | | | | |
| APPROVED | | | REF: S00087T | SCALE: NTS | SHEET 1 OF 1 |

SPECIFICATIONS:
Material:
Insulator: PBT, glass reinforced, rated UL 94V-0
Insulator color: Black
Contacts: Copper Alloy
Shell: Steel, Tin plated
Hardware: Brass, Nickel plated
Plating:
Gold flash over Nickel underplate overall
Electrical:
Operating voltage: 250 VAC max
Current rating: 3 Amps max
Contact resistance: 20 mohms max
Insulation resistance: 1,000 Mohms min
Dielectric withstanding voltage: 1,000 VAC for 1 minute
Environmental:
Lead free, RoHS compliant



Mouser Electronics

Authorized Distributor

Click to View Pricing, Inventory, Delivery & Lifecycle Information:

[Adam Tech:](#)

[DA15-PD-SL](#) [DE09-PD-SL](#) [DC37-PD-SL](#)