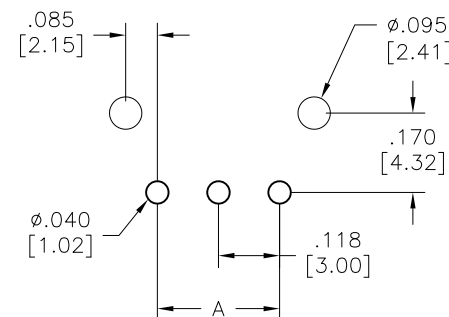
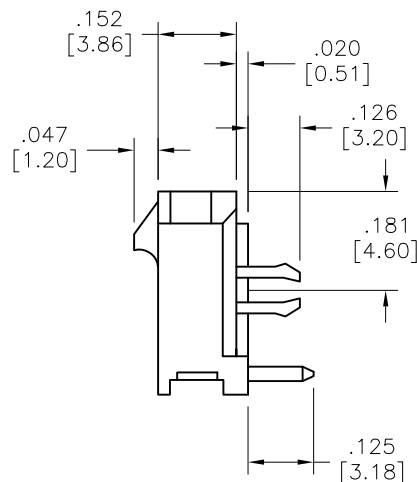
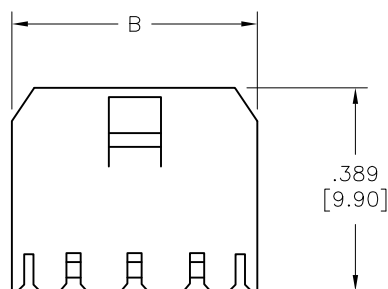
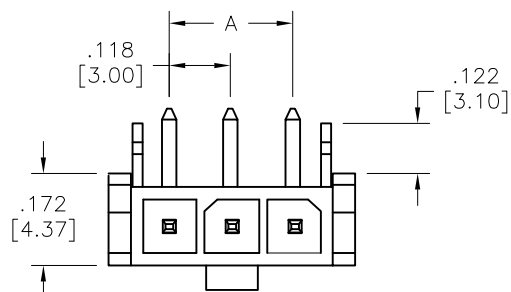


APPROVED: _____

DATE: _____ TITLE: _____

Rev	AWO #	Description	Date	Appr
-		RELEASED	5/9/12	
A		UPDATE DIM.& SPEC.	9/26/18	AY/SL
B		UPDATE DIM.& SPEC.	3/17/20	OW/IW



RECOMMENDED PCB LAYOUT

POSITIONS	Dimension			
	A		B	
2	.118	[3.00]	.380	[9.65]
3	.236	[6.00]	.498	[12.65]
4	.354	[9.00]	.616	[15.65]
5	.472	[12.00]	.734	[18.65]
6	.591	[15.00]	.852	[21.65]
7	.709	[18.00]	.970	[24.65]
8	.827	[21.00]	1.089	[27.65]
9	.945	[24.00]	1.207	[30.65]
10	1.063	[27.00]	1.325	[33.65]
11	1.181	[30.00]	1.443	[36.65]
12	1.299	[33.00]	1.561	[39.65]

SPECIFICATIONS:

Material:

Insulator: LCP, rated UL 94V-0

Insulator color: Black

Contacts: Brass

Plating:

Tin over Copper underplate overall

Electrical:

Voltage rating: 250 V

Current rating: 5 Amps max.

Contact resistance: 10 mohms max.

Dielectric withstanding voltage: 1500 VAC for 1 minute

Environmental:

Lead free, RoHS compliant.



UNLESS OTHERWISE SPECIFIED
ALL DIMENSIONS ARE INCHES [MM]
TOLERANCES: EXCEPT AS NOTED
INCHES HOLES
.X ± .10 Ø.X ± .10
.XX ± .020 Ø.XX ± .015
.XXX ± .015 Ø.XXX ± .010

APPROVALS		DATE
DRAWN	AY	5/9/12
CHECKED	OC	5/9/12
APPROVED		

ADAM
TECH
INTERCONNECTS

909 Rahway Avenue,
Union, NJ 07083
Phone: 908-687-5000
Fax: 908-687-5710

TITLE .118" [3.00MM] PITCH, PCB MOUNT HOUSING & TERMINAL RIGHT ANGLE, BOARD LOCKS			
SIZE X	PART NO. DML-1-XX-A-H-T-A-BL	REV. B	
REF: S00123T	SCALE: NTS	SHEET 1 OF 1	

Mouser Electronics

Authorized Distributor

Click to View Pricing, Inventory, Delivery & Lifecycle Information:

[Adam Tech:](#)

[DML-1-03-A-H-T-A-BL](#) [DML-1-05-A-H-T-A-BL](#) [DML-1-02-A-H-T-A-BL](#) [DML-1-04-A-H-T-A-BL](#)