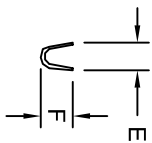
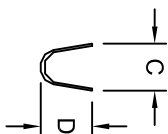
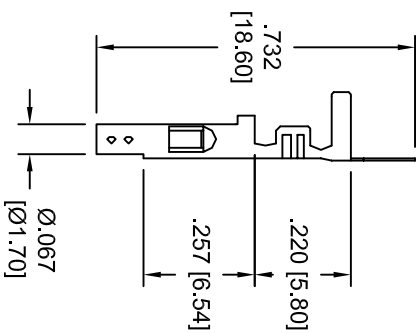
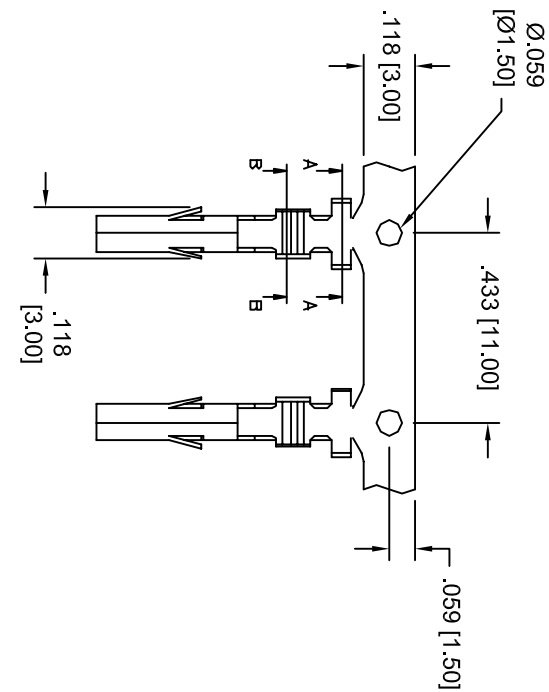


Rev	AWO #	Description	Date	Appr
-		RELEASED	6/7/07	

APPROVED: \_\_\_\_\_

DATE: \_\_\_\_\_ TITLE: \_\_\_\_\_



SEC A-A

SEC B-B

PART #	WIRE AWG	DIMENSIONS			
		C	D	E	F
DMH-A-C-F-B	22 ~ 26	.134 [3.4]	.130 [3.3]	.098 [2.5]	.090 [2.3]
DMH-B-C-F-B	18 ~ 22	.157 [4.0]	.177 [4.5]	.098 [2.5]	.090 [2.3]
DMH-C-C-F-B	16	.157 [4.0]	.177 [4.5]	.110 [2.8]	.106 [2.7]

**SPECIFICATIONS:**

Material:

Contacts: Brass

Plating:

Tin over Copper underplate overall

Electrical:

Operating voltage: 250 VAC max

Current rating: 5 Amps max

Contact resistance: 20 mohms max

Environmental:

Lead free, RoHS compliant.



**ADAM TECH**

909 Rahway Avenue, Union, NJ 07083

Phone: 908-687-5000 Fax: 908-687-5710

TITLE

CRIMP CONTACT, DMH SERIES  
FEMALE, TIN PLATED, BAGGED

A

B

C

D

A

B

C

D

6

5

4

3

2

1

# Mouser Electronics

Authorized Distributor

Click to View Pricing, Inventory, Delivery & Lifecycle Information:

[Adam Tech:](#)

[DMH-A-C-F-B](#) [DMH-B-C-F-B](#)