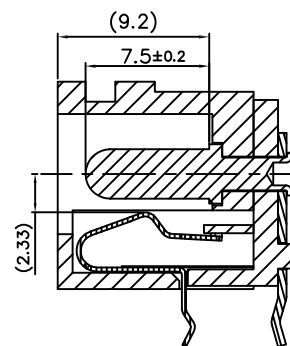
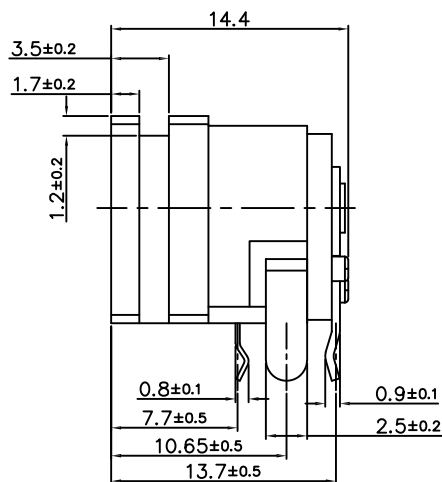
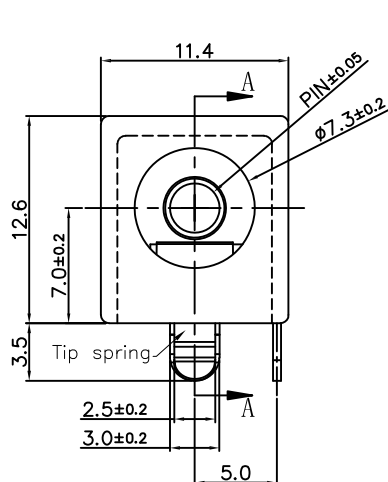


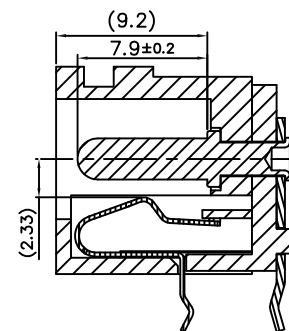
APPROVED: \_\_\_\_\_

DATE: \_\_\_\_\_ TITLE: \_\_\_\_\_

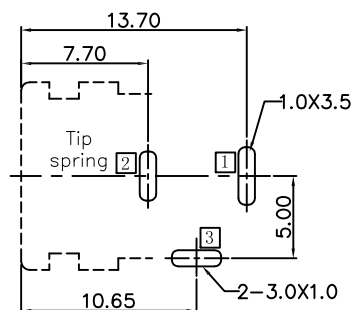
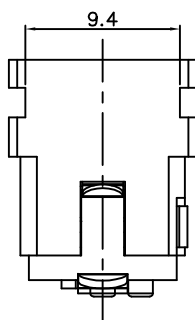
| Rev | AWO # | Description                       | Date     | Appr   |
|-----|-------|-----------------------------------|----------|--------|
| -   | 10652 | RELEASED                          | 10/27/10 |        |
| A   |       | Operating Temp was -25°C to +70°C | 8/12/14  |        |
| B   |       | UPDATED DRAWING                   | 11/16/18 | HR/AC1 |



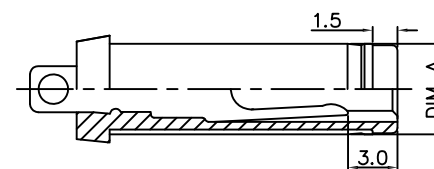
SECTION A-A  
Ø3.0



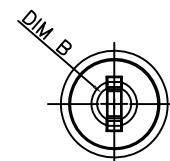
SECTION A-A  
Ø2.0 & Ø2.5



RECOMMENDED PCB LAYOUT



DC MATE PLUG



SPECIFICATIONS:

Material:

Insulator: PBT, rated UL 94V-0

Insulator color: Black

Center Pin: Copper Alloy

Contacts: Copper Alloy

Tip spring: Stainless Steel, Tin plated

Plating:

Tin over Copper underplate overall

Electrical:

Rating: 20VDC, 3A

Contact resistance: 50 mohms max.

Insulation resistance: 100 Mohms min @ 500 VDC.

Dielectric withstanding voltage: 500 VAC

Temperature Rating:

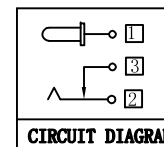
Operating temperature: -20°C to +70°C

Environmental:

Lead free, RoHS compliant



| Model No. | ADC-033-1                               | ADC-033-2                               | ADC-033-10                              |
|-----------|---|---|---|
| PIN       | Ø2.0                                    | Ø2.5                                    | Ø3.0                                    |
| DIM A     | Ø6.3±0.05                               | Ø6.3±0.05                               | Ø6.55±0.05                              |
| DIM B     | Ø2.05 <sup>+0.10</sup> <sub>-0.00</sub> | Ø2.55 <sup>+0.10</sup> <sub>-0.00</sub> | Ø3.05 <sup>+0.10</sup> <sub>-0.00</sub> |



CIRCUIT DIAGRAM

UNLESS OTHERWISE SPECIFIED  
ALL DIMENSIONS ARE MILLIMETERS  
TOLERANCES: EXCEPT AS NOTED

|             |          |
|-------------|----------|
| MM          | ANGLE    |
| .X ± 0.50   | X ± 5°   |
| .XX ± 0.30  | .X ± 3°  |
| .XXX ± 0.15 | .XX ± 2° |

| APPROVALS |    | DATE     |
|-----------|----|----------|
| DRAWN     | DY | 10/27/10 |
| CHECKED   |    |          |
| APPROVED  |    |          |

**ADAM TECH**  
INTERCONNECTS

909 Rahway Avenue,  
Union, NJ 07083  
Phone: 908-687-5000  
Fax: 908-687-5710

| TITLE   |           |        |     |
|---|-----------|--------|-----|
| DC POWER JACK, 2.00mm, 2.50mm, 3mm CENTER PIN |           |        |     |
| SIZE  | PART NO.  | REV.   |     |
| X   | ADC-033-X | B      |     |
| REF:  | S00002C   | SCALE: | NTS |
| SHEET 1 OF 1                                  |           |        |     |

# Mouser Electronics

Authorized Distributor

Click to View Pricing, Inventory, Delivery & Lifecycle Information:

[Adam Tech:](#)

[ADC-033-2](#) [ADC-033-1](#) [ADC-033-10](#)