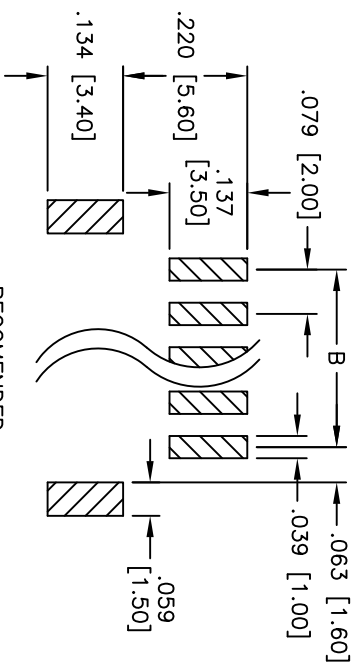
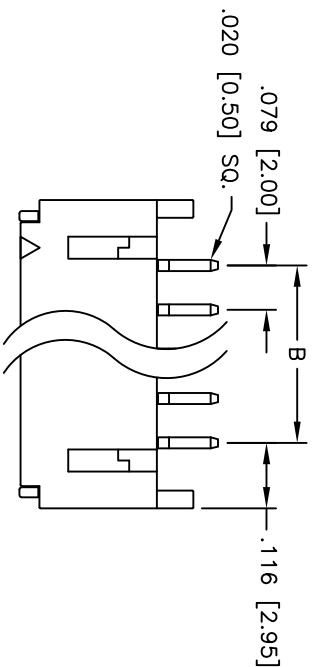
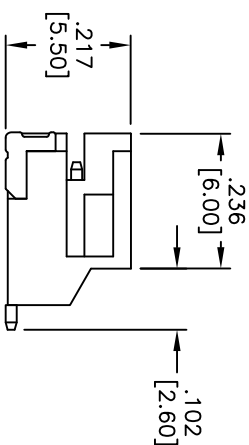
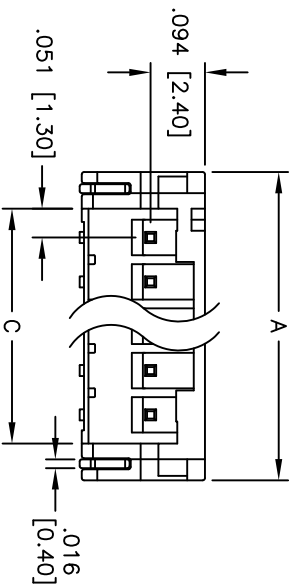


APPROVED: _____
DATE: _____ TITLE: _____



RECOMMENDED
PCB LAYOUT



SPECIFICATIONS:

Material: Insulator: Hi-temp thermoplastic, rated UL 94V-0
Insulator color: White
Contacts: Brass
Plating: Tin over Copper underplate overall
Electrical: Operating voltage: 100 VAC max
Current rating: 2 Amps max
Contact resistance: 10 mohms max
Insulation resistance: 1,000 Mohms min @ 500 VDC
Dielectric withstanding voltage: 1,000 VAC for 1 minute
Temperature Rating: Operating temperature: -25°C to +85°C
Environmental: Lead free, RoHS compliant



Rev	AWO #	Description	Date	Appr
-	-	RELEASED	12/15/06	
A		REVISED SPEC	8/5/11	

PACKAGED ON TAPE & REEL

Positions: 2 thru 16
A = .079 [2.00] x No. of Positions + .153 [3.90]
B = .079 [2.00] x No. of Spaces
C = .079 [2.00] x No. of Positions + .024 [0.60]

UNLESS OTHERWISE SPECIFIED ALL DIMENSIONS ARE INCHES [MM] TOLERANCES: EXCEPT AS NOTED INCHES		TITLE .079 [2.00] SHROUDED HEADER RIGHT ANGLE, SURFACE MOUNT	
.X ± .10 .XX ± .020 .XXX ± .015	ØX ± .10 ØXX ± .015 ØXXX ± .010	909 Railway Avenue, Union, NJ 07083 Phone: 908-687-5000 Fax: 908-687-5710	
APPROVALS	DATE	ADAM TECH	
DRAWN	BW	12/15/06	
CHECKED		SIZE PART NO. 2SH-C-XX-TR-SMT-T/R	
APPROVED		REF: S00015T SCALE: NTS SHEET 1 OF 1	

Mouser Electronics

Authorized Distributor

Click to View Pricing, Inventory, Delivery & Lifecycle Information:

[Adam Tech:](#)

[2SH-C-12-TR-SMT-T/R](#) [2SH-C-09-TR-SMT-T/R](#) [2SH-C-04-TR-SMT-T/R](#) [2SH-C-15-TR-SMT-T/R](#) [2SH-C-06-TR-SMT-T/R](#) [2SH-C-14-TR-SMT-T/R](#) [2SH-C-07-TR-SMT-T/R](#) [2SH-C-16-TR-SMT-T/R](#) [2SH-C-10-TR-SMT-T/R](#) [2SH-C-11-TR-SMT-T/R](#) [2SH-C-02-TR-SMT-T/R](#) [2SH-C-03-TR-SMT-T/R](#) [2SH-C-08-TR-SMT-T/R](#) [2SH-C-05-TR-SMT-T/R](#) [2SH-C-13-TR-SMT-T/R](#)