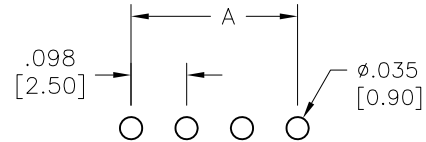
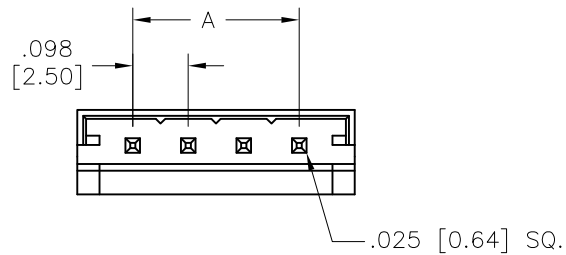


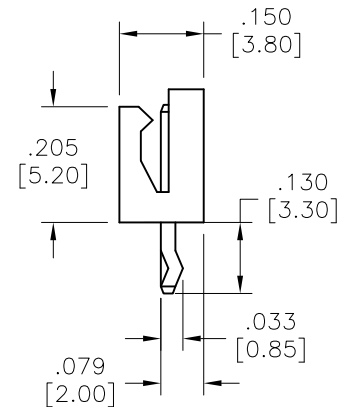
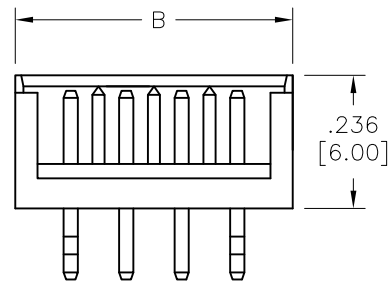
APPROVED: _____

DATE: _____ TITLE: _____

Rev	AWO #	Description	Date	Appr
-		RELEASED	9/19/05	
A		REDRAWN	4/16/10	
B		ADDED DIM.	12/1/15	AY/YC
C		UPDATE DRAWING	12/24/20	OW/LX



RECOMMENDED PCB LAYOUT



SPECIFICATIONS:

Material:

Insulator: Nylon, rated UL 94V-0

Insulator color: Nature

Contacts: Brass

Plating:

Tin over Copper underplate overall

Electrical:

Voltage rating: 250V AC, DC

Current rating: 3A AC, DC

Insulation resistance: 1000 Mohms min

Dielectric withstanding voltage: 800 VAC for 1 minute

Temperature Rating:

-25°C to +85°C

Environmental:

Lead free, RoHS compliant.



Positions: 02 thru 12

A = .098 [2.50] x No. of Space

B = .098 [2.50] x No. of Space + .197 [5.00]

UNLESS OTHERWISE SPECIFIED
ALL DIMENSIONS ARE INCHES [MM]
TOLERANCES: EXCEPT AS NOTED
INCHES HOLES
.X ± .10 ØX ± .10
.XX ± .020 ØXX ± .015
.XXX ± .015 ØXXX ± .010

APPROVALS		DATE
DRAWN	SS	9/19/05
CHECKED		
APPROVED		

ADAM
TECH

909 Rahway Avenue,
Union, NJ 07083
Phone: 908-687-5000
Fax: 908-687-5710

TITLE			
2.5MM SHROUDED HEADER, SINGLE ROW, TIN PLATED			
SIZE	PART NO.	REV.	
X	25SH-C-XX-TS	C	
REF: S00016T		SCALE: NTS	SHEET 1 OF 1

Mouser Electronics

Authorized Distributor

Click to View Pricing, Inventory, Delivery & Lifecycle Information:

[Adam Tech:](#)

[25SH-C-15-TS](#) [25SH-C-05-TS](#) [25SH-C-06-TS](#) [25SH-C-10-TS](#) [25SH-C-13-TS](#) [25SH-C-03-TS](#) [25SH-C-11-TS](#)
[25SH-C-09-TS](#) [25SH-C-14-TS](#) [25SH-C-02-TS](#) [25SH-C-07-TS](#) [25SH-C-08-TS](#) [25SH-C-04-TS](#) [25SH-C-12-TS](#)