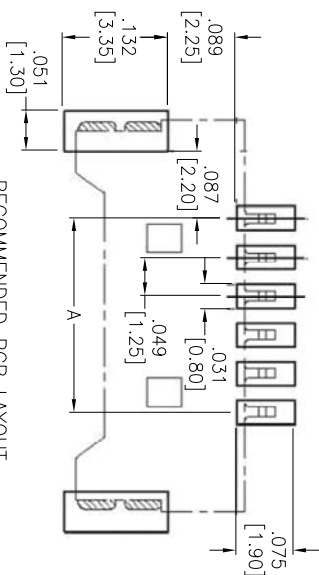
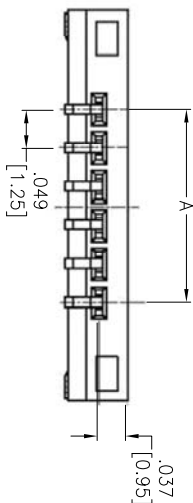
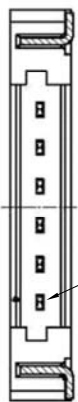
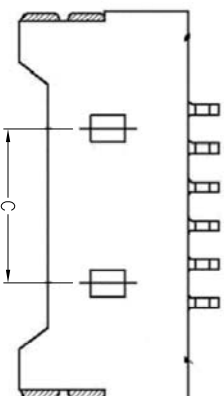
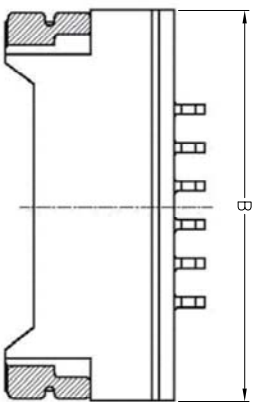


APPROVED: _____
DATE: _____ TITLE: _____

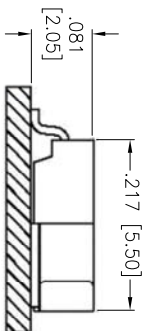
Rev	AWO #	Description	Date	Appr
-		RELEASED	7/27/10	
A		REDRAWN	10/2/14	HR/LL



RECOMMENDED PCB LAYOUT



Circuit 1



ASSEMBLY VIEW

PACKAGED ON TAPE & REEL

Positions: 02 thru 16 and 18, 20, 22, 24, 26, 28, 30
A = .049 [1.25] x No. of Spaces
B = .049 [1.25] x No. of Spaces + .252 [6.40]
C = .049 [1.25] x No. of Spaces - .049 [1.25]

ADAM TECH

909 Railway Avenue, Union, NJ 07083
Phone: 908-687-5000 Fax: 908-687-5710

.049 [1.25] WAFER, SMT, RIGHT ANGLE

TIN PLATED

Electrical:
Operating voltage: 100 VAC/DC max
Current rating: AC/DC 1 Amps max
Contact resistance: 20 mohms max
Insulation resistance: 100 Mohms min
Dielectric withstanding voltage: 250 VAC for 1 minute
Mechanical:
Temperature Rating:
Operating temperature: -25°C to +85°C
Environmental:
Lead free, RoHS compliant



UNLESS OTHERWISE SPECIFIED ALL DIMENSIONS ARE INCHES [MM] TOLERANCES: EXCEPT AS NOTED				INCHES				Holes			
.X	± .10	ØX	± .10	.X	± .10	ØX	± .10	.X	± .10	ØX	± .10
.XX	± .020	ØXX	± .015	.XX	± .020	ØXX	± .015	.XX	± .015	ØXX	± .010
.XXX	± .015	ØXXX	± .010	.XXX	± .015	ØXXX	± .010	.XXX	± .015	ØXXX	± .010
APPROVALS				DATE				DATE			
DRAWN				DY				7/27/10			
CHECKED											
APPROVED											
SIZE				PART NO.				REV.			
X				12SSH-G-XX-TR-SMT-T/R				A			
REF:				S00123T				SHEET 1 OF 1			
SCALE:				NTS							

Mouser Electronics

Authorized Distributor

Click to View Pricing, Inventory, Delivery & Lifecycle Information:

[Adam Tech:](#)

[125SH-G-02-TR-SMT-T/R](#) [125SH-G-09-TR-SMT-T/R](#) [125SH-G-04-TR-SMT-T/R](#) [125SH-G-05-TR-SMT-T/R](#) [125SH-G-08-TR-SMT-T/R](#) [125SH-G-10-TR-SMT-T/R](#) [125SH-G-03-TR-SMT-T/R](#) [125SH-G-06-TR-SMT-T/R](#) [125SH-G-07-TR-SMT-T/R](#)