

|  |
|--|
| REV. Status  |
| REVISION -<br>7-23-96 TS   |
| REVISION A<br>REFORMATTED<br>08/14/96 TS                         |
| REVISION B<br>REFORMATTED<br>07/15/97 TS                         |
| REVISION C<br>CHANGED A.7.<br>08/20/99 TS                        |
| REVISION D<br>ADDED RoHS<br>01/12/06 MP                          |
| REVISION E<br>SAFETY UPDATED<br>FUSE INFO<br>ADDED<br>6-22-09 MP |
| REVISION F<br>REMOVED<br>TEMECULA CA.<br>11-22-19 MP             |

# THREE FLANGE SINGLE PRIMARY 12.0VA PC BOARD POWER TRANSFORMER

## A. Electrical Specifications (@ 25°C)

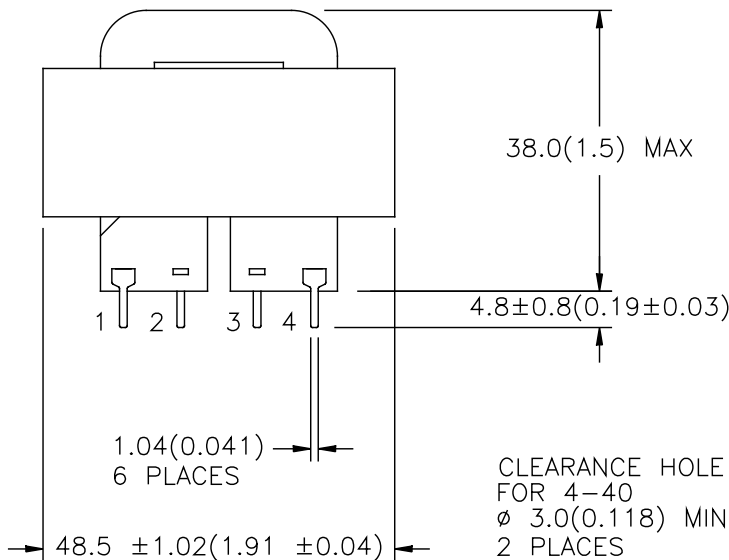
- Maximum Power: 12.0 VA
- Input Voltage and Frequency: 115V 50/60 Hz
- Secondary Voltage: See Table A
- Voltage Regulation: 19% TYP @ full load to no load
- Temperature Rise: 45°C TYP (50°C MAX allowed)
- Insulation Resistance:  
100 MΩ MIN @ 500VDC, Pri to Sec, Pri to Core  
100 MΩ MIN @ 500VDC, Sec to Core
- Hi-Pot: 2500 Vrms 1 minute @ Pri to Sec  
1500 Vrms 1 minute @ Pri to Core  
1500 Vrms 1 minute @ Sec to Core  
500 Vrms 1 minute @ Sec to Sec

B. Marking: TAMURA, Tamura part number (see sheet 2),  
MICROTRAN, Microtran part number (see sheet 2),  
date code, country of origin, safety logos and  
input and output ratings

## C. Safety:

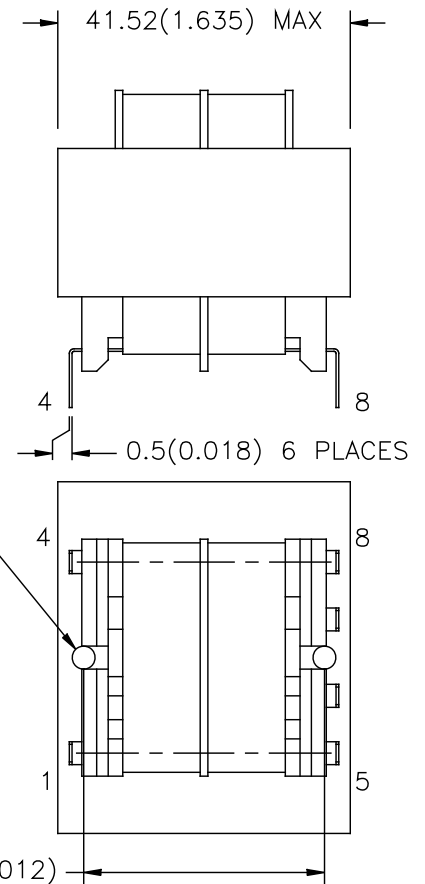
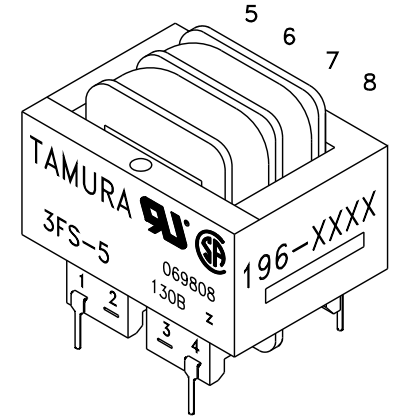
Insulation Class B (130°C) File No. E92957  
CSA 22.2 No. 66-1988, File No. 069808.  
UL 1585, Class 2 or 3, Noninherently limited,  
File No. E95844.  
UL 506, General Purpose, File No. E91239

## D. Mechanical Specifications:



MODEL NUMBER

3FS-5XX & PSS5-XX



PREPARED BY:

C. POPPE

ENGINEER:

M. PITCHAI

SAFETY ENGINEER

DRAWING CONTROL NO.

P-A1-11648

REV

F

MODEL DESCRIPTION

SIZE 5 3FS & PSS FAMILY  
POWER TRANSFORMER

**TAMURA CORPORATION OF AMERICA**

1040 SOUTH ANDREASEN DRIVE, #100 ESCONDIDO, CA. 92029  
(760) 871-2009

MODEL SPECIFICATION

3FS-5XX & PSS5-XX

DIM: mm[In]

SCL: NONE

SH: 1 OF 2

APPROVED:

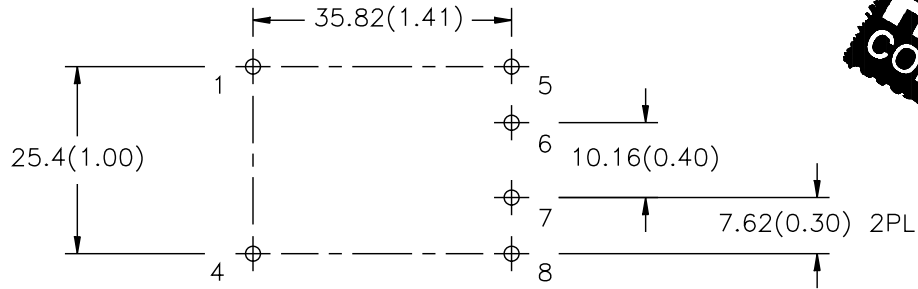
M. PITCHAI

PROPRIETARY NOTICE: THIS DRAWING PRINT OR DOCUMENT AND SUBJECT MATTER DISCLOSED HEREIN ARE PROPRIETARY ITEMS TO WHICH TAMURA RETAINS THE EXCLUSIVE RIGHT OF DISSEMINATION, REPRODUCTION, MANUFACTURE AND SALE. THIS DRAWING, PRINT OR DOCUMENT IS SUBMITTED IN CONFIDENCE FOR CONSIDERATION BY THE RECIPIENT ALONE UNLESS PERMISSION FOR FURTHER DISCLOSURE IS EXPRESSLY GRANTED IN WRITING.

## REV. Status

REVISION –  
FOR REVISION  
HISTORY

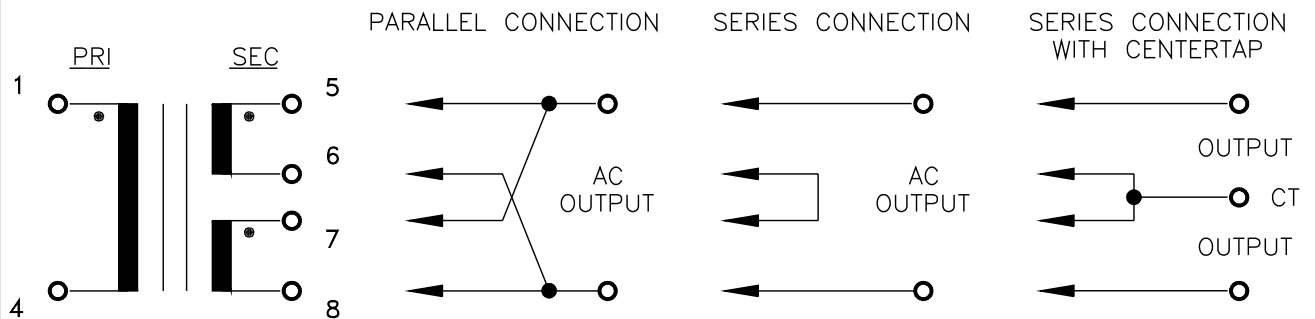
## E. Mounting Footprint:



MODEL NUMBER

3FS-5XX &amp; PSS5-XX

## F. Schematic Diagram:



\*not UL-recognized for series connect.

G. Table A: (NOTE: All parts are dual marked with both part numbers).

UL Approved Fuse.

| TAMURA<br>PART NO. | MICROTRAN<br>PART NO. | PARALLEL |          | SERIES   |          | SERIES WITH CT |          | SECONDARY<br>FUSE REQUIRED<br>EACH WINDING |
|--------------------|-----------------------|----------|----------|----------|----------|----------------|----------|--|
|                    |                       | AC VOLTS | RMS AMPS | AC VOLTS | RMS AMPS | AC VOLTS       | RMS AMPS |  |
| 3FS-510            | PSS5-10               | 5.0      | 2.4      | 10.0     | 1.2      | 5.0-CT-5.0     | 1.2      | 1.50A                                      |
| 3FS-512            | PSS5-12               | 6.3      | 2.0      | 12.6     | 1.0      | 6.3-CT-6.3     | 1.0      | 1.25A                                      |
| 3FS-516            | PSS5-16               | 8.0      | 1.6      | 16.0     | 0.8      | 8.0-CT-8.0     | 0.8      | 1.0A                                       |
| 3FS-520            | PSS5-20               | 10.0     | 1.2      | 20.0     | 0.6      | 10.0-CT-10.0   | 0.6      | 0.75A                                      |
| 3FS-524            | PSS5-24               | 12.0     | 1.0      | 24.0     | 0.5      | 12.0-CT-12.0   | 0.5      | 0.60A                                      |
| 3FS-528            | PSS5-28               | 14.0     | 0.84     | 28.0     | 0.42     | 14.0-CT-14.0   | 0.42     | 0.50A                                      |
| 3FS-536            | PSS5-36               | 18.0     | 0.7      | 36.0     | 0.35     | 18.0-CT-18.0   | 0.35     | 0.50A                                      |
| 3FS-548            | PSS5-48               | 24.0     | 0.5      | 48.0     | 0.25     | 24.0-CT-24.0   | 0.25     | 0.315A                                     |
| 3FS-556            | PSS5-56               | 28.0     | 0.44     | 56.0     | 0.22     | 28.0-CT-28.0   | 0.22     | 0.30A                                      |
| 3FS-5120           | PSS5-120              | 60.0     | 0.2      | 120.0*   | 0.1      | 60.0-CT-60.0   | 0.1      | N/A  |

PREPARED BY:

C. POPPE

ENGINEER:

M. PITCHAI

SAFETY ENGINEER

DRAWING CONTROL NO.

P-A1-11648

REV

F

MODEL DESCRIPTION  
SIZE 5 3FS & PSS FAMILY  
POWER TRANSFORMER**TAMURA CORPORATION OF AMERICA**  
1040 SOUTH ANDREASEN DRIVE, #100 ESCONDIDO, CA. 92029  
(760) 871-2009

MODEL SPECIFICATION

3FS-5XX &amp; PSS5-XX

DIM: mm[In] SCL: NONE Sh: 2 OF 2

APPROVED:

M. PITCHAI

PROPRIETARY NOTICE: THIS DRAWING PRINT OR DOCUMENT AND SUBJECT MATTER DISCLOSED HEREIN ARE PROPRIETARY ITEMS TO WHICH TAMURA RETAINS THE EXCLUSIVE RIGHT OF DISSEMINATION, REPRODUCTION, MANUFACTURE AND SALE. THIS DRAWING, PRINT OR DOCUMENT IS SUBMITTED IN CONFIDENCE FOR CONSIDERATION BY THE RECIPIENT ALONE UNLESS PERMISSION FOR FURTHER DISCLOSURE IS EXPRESSLY GRANTED IN WRITING.

# Mouser Electronics

Authorized Distributor

Click to View Pricing, Inventory, Delivery & Lifecycle Information:

Tamura:

[3FS-528](#) [3FS-524](#) [3FS-548](#) [3FS-520](#) [3FS-512](#) [3FS-516](#) [3FS-510](#) [3FS-536](#) [3FS-556](#)