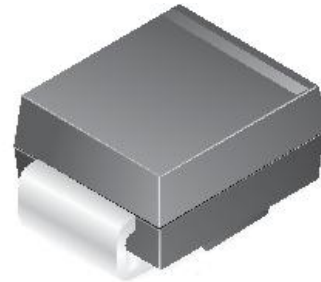


## 600W Transient Voltage Suppressor

### FEATURES

- Glass passivated junction
- 600W peak pulse power capability on 10/1000 $\mu$ s waveform
- Excellent clamping capability
- Low-Incremental surge resistance
- Fast response time: Typically less than 1.0ps from 0V to BV minimum for unidirectional and 5.0ns for bidirectional
- Typical  $I_R$  less than 1 $\mu$ A above 10V
- UL certificate #E258596



### SMB/DO-214AA

Band denotes cathode on unidirectional devices only.  
No band on bi-directional devices. Bi-directional types have CA suffix where electrical characteristics apply in both directions suitable for bi-directional applications.

### ABSOLUTE MAXIMUM RATINGS

Stresses exceeding the absolute maximum ratings may damage the device. The device may not function or be operable above the recommended operating conditions and stressing the parts to these levels is not recommended. In addition, extended exposure to stresses above the recommended operating conditions may affect device reliability. The absolute maximum ratings are stress ratings only. Values are at  $T_A = 25^\circ\text{C}$  unless otherwise noted.

PARAMETER	SYMBOL	VALUE	UNIT
Peak pulse power dissipation $t_p=1\text{ms}$	$P_{PPM}$	600	W
Peak pulse current on 10/1000 $\mu$ s waveform	$I_{PPM}$	see table	A
Non-Repetitive Peak Forward Surge Current Superimposed on Rated Load (JEDEC Method) <sup>(1)</sup>	$I_{FSM}$	100	A
Junction temperature	$T_J$	-55 to +150	$^\circ\text{C}$
Storage temperature	$T_{STG}$	-55 to +150	$^\circ\text{C}$

#### Note:

1. Measured on 8.3ms single half-sine wave; duty cycle = 4 pulses per minute maximum.

**ELECTRICAL SPECIFICATIONS** ( $T_A = 25^\circ\text{C}$  unless otherwise noted)

Uni-directional Bi-directional (C) Device	Part Marking <sup>(2)</sup>	Reverse Stand-Off Voltage $V_{RWM}$ (V)	Breakdown Voltage $V_{BR}$ (V)		Test Current $I_T$ (mA)	Clamping Voltage at $I_{PPM}$ $V_C$ (V)	Peak Pulse Current $I_{PPM}$ (A)	Reverse Leakage Current at $V_{RWM}$ $I_R$ ( $\mu\text{A}$ ) <sup>(3)</sup>
			Min.	Max.				
SMBJ5V0(C)A	KE	5.0	6.4	7	10	9.2	65.2	800
SMBJ6V0(C)A	KG	6.0	6.67	7.37	10	10.3	58.3	800
SMBJ6V5(C)A	KK	6.5	7.22	7.98	10	11.2	53.6	500
SMBJ7V0(C)A	KM	7.0	7.78	8.6	10	12.0	50	200
SMBJ7V5(C)A	KP	7.5	8.33	9.21	1	12.9	46.5	100
SMBJ8V0(C)A	KR	8.0	8.89	9.83	1	13.6	44.1	50
SMBJ8V5(C)A	KT	8.5	9.44	10.4	1	14.4	41.7	20
SMBJ9V0(C)A	KV	9.0	10	11.1	1	15.4	39	10
SMBJ10(C)A	KX	10	11.1	12.8	1	17.0	35.3	5
SMBJ11(C)A	KZ	11	12.2	13.5	1	18.2	33	5
SMBJ12(C)A	LE	12	13.3	14.7	1	19.9	30.2	5
SMBJ13(C)A	LG	13	14.4	15.9	1	21.5	27.9	5
SMBJ14(C)A	LK	14	15.6	17.2	1	23.2	25.9	5
SMBJ15(C)A	LM	15	16.7	18.5	1	24.4	24.6	5
SMBJ16(C)A	LP	16	17.8	19.7	1	26.0	23.1	5
SMBJ17(C)A	LR	17	18.9	20.9	1	27.6	21.7	5
SMBJ18(C)A	LT	18	20	22.1	1	29.2	20.5	5
SMBJ20(C)A	LV	20	22.2	24.5	1	32.4	18.5	5
SMBJ22(C)A	LX	22	24.4	26.9	1	35.5	16.9	5
SMBJ24(C)A	LZ	24	26.7	29.5	1	38.9	15.4	5
SMBJ26(C)A	ME	26	28.9	31.9	1	42.1	14.3	5
SMBJ28(C)A	MG	28	31.1	34.4	1	45.4	13.2	5
SMBJ30(C)A	MK	30	33.3	36.8	1	48.4	12.4	5
SMBJ33(C)A	MM	33	36.7	40.6	1	53.3	11.3	5
SMBJ36(C)A	MP	36	40	44.2	1	58.1	10.3	5
SMBJ40(C)A	MR	40	44.4	49.1	1	64.5	9.3	5
SMBJ43(C)A	MT	43	47.8	52.8	1	69.4	8.6	5
SMBJ45(C)A	MV	45	50	55.3	1	72.7	8.3	5
SMBJ48(C)A	MX	48	53.3	58.9	1	77.4	7.8	5
SMBJ51(C)A	MZ	51	56.7	62.7	1	82.4	7.3	5
SMBJ54(C)A	NE	54	60	66.3	1	87.1	6.9	5
SMBJ58(C)A	NG	58	64.4	71.2	1	93.6	6.4	5
SMBJ60(C)A	NK	60	66.7	73.7	1	96.8	6.2	5
SMBJ64(C)A	NM	64	71.1	78.6	1	103	5.8	5
SMBJ70(C)A	NP	70	77.8	86	1	113	5.3	5
SMBJ75(C)A	NR	75	83.3	92.1	1	121	5	5
SMBJ78(C)A	NT	78	86.7	95.8	1	126	4.8	5

<b>ELECTRICAL SPECIFICATIONS</b> ( $T_A = 25^\circ\text{C}$ unless otherwise noted)								
Uni-directional Bi-directional (C) Device	Part Marking <sup>(2)</sup>	Reverse Stand-Off Voltage $V_{RWM}$ (V)	Breakdown Voltage $V_{BR}$ (V)		Test Current $I_T$ (mA)	Clamping Voltage at $I_{PPM}$ $V_C$ (V)	Peak Pulse Current $I_{PPM}$ (A)	Reverse Leakage Current at $V_{RWM}$ $I_R$ ( $\mu\text{A}$ ) <sup>(3)</sup>
			Min.	Max.				
SMBJ85(C)A	NV	85	94.4	104.0	1	137.0	4.4	5
SMBJ90(C)A	NX	90	100.0	111.0	1	146.0	4.1	5
SMBJ100(C)A	NZ	100	111.0	123.0	1	162.0	3.7	5
SMBJ110(C)A	PE	110	122.0	135.0	1	177.0	3.4	5
SMBJ120(C)A	PG	120	133.0	147.0	1	193.0	3.1	5
SMBJ130(C)A	PK	130	144.0	159.0	1	209.0	2.9	5
SMBJ150(C)A	PM	150	167.0	185.0	1	243.0	2.5	5
SMBJ160(C)A	PP	160	178.0	197.0	1	259.0	2.3	5
SMBJ170(C)A	PR	170	189.0	209.0	1	275.0	2.2	5

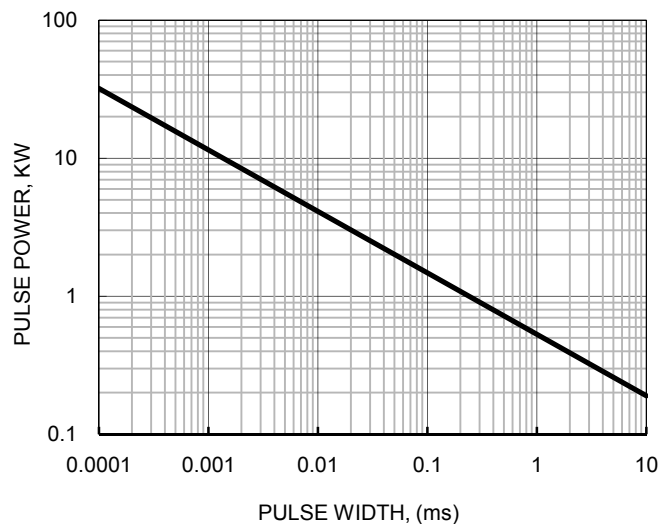
**Notes:**

2. Color band denotes cathode on unidirectional devices only. No color band on bidirectional devices.
3. For bidirectional parts with  $V_{RWM} < 10$  V, the  $I_R$  max limit is doubled.

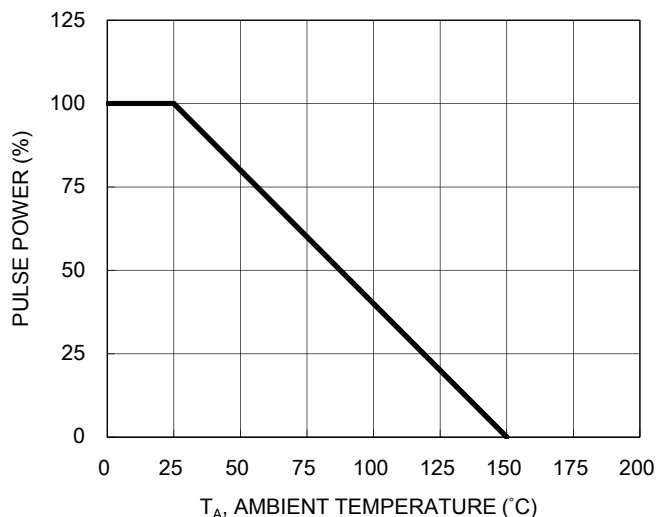
**CHARACTERISTICS CURVES**

( $T_A = 25^\circ\text{C}$  unless otherwise noted)

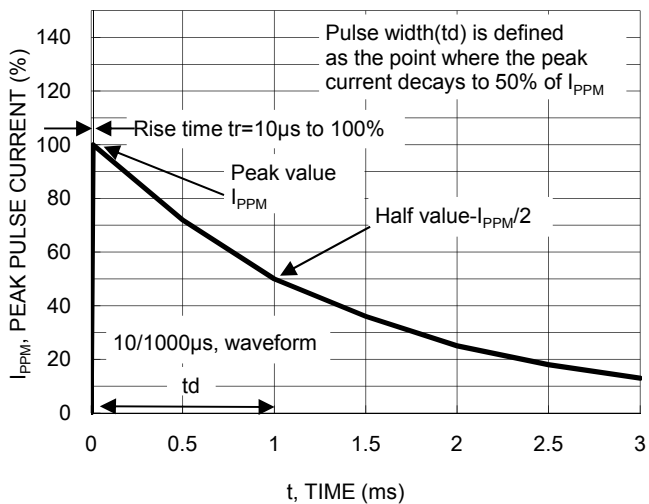
**Fig1. Peak Pulse Power rating Curve**



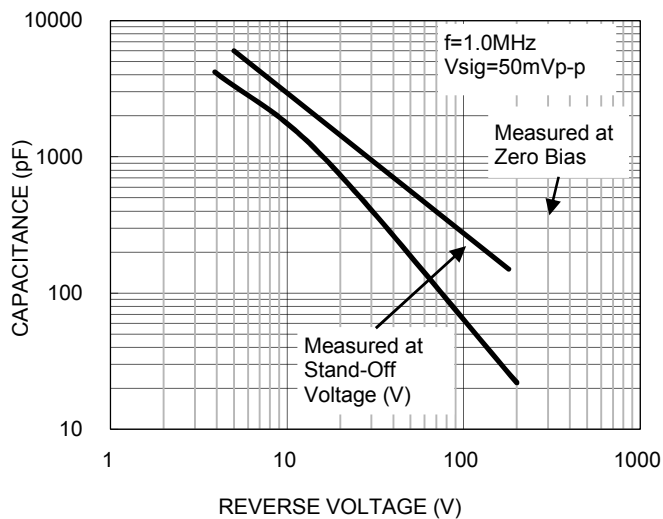
**Fig2. Pulse Derating Curve**



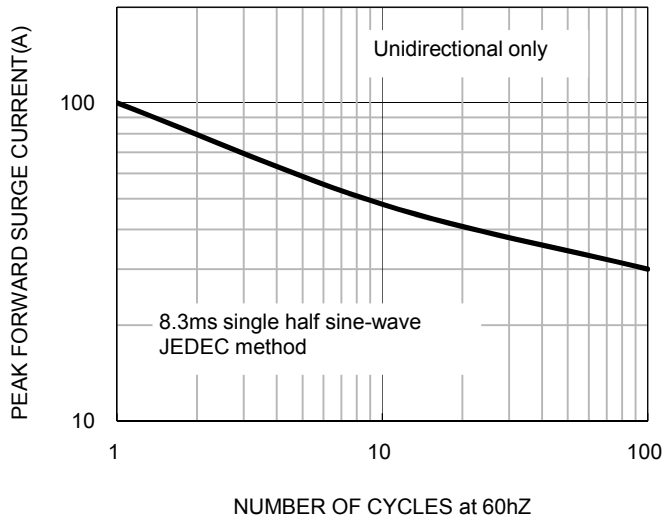
**Fig3. Pulse Waveform**



**Fig4. Junction Capacitance**

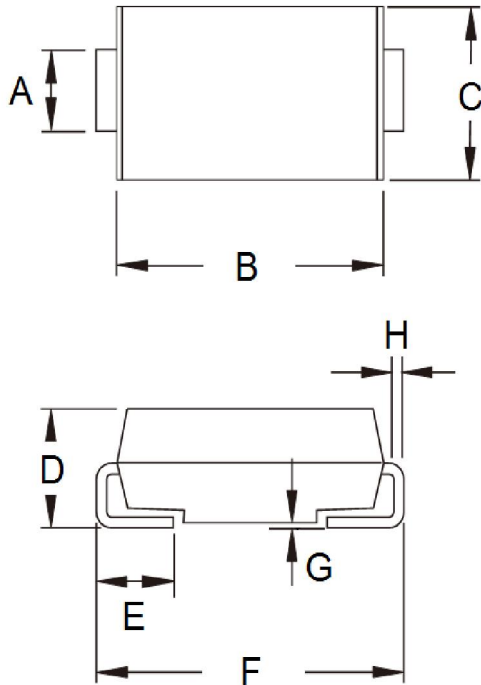


**Fig5. Non-repetitive surge current**



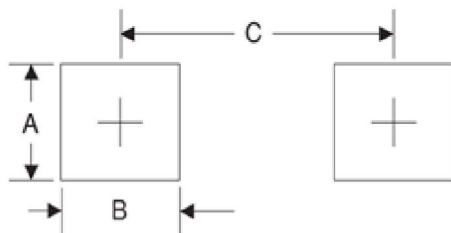
**PACKAGE OUTLINE DIMENSIONS**

DO-214AA (SMB)



DIM.	Unit (mm)	
	Min	Max
A	1.91	2.20
B	4.05	4.75
C	3.30	3.95
D	-	2.65
E	0.75	1.60
F	5.08	5.60
G	0.05	0.203
H	0.15	0.41

**SUGGESTED PAD LAYOUT**



Symbol	Unit (mm)
A	2.2
B	2.5
C	4.7

## Notice

Specifications of the products displayed herein are subject to change without notice. TSC or anyone on its behalf assumes no responsibility or liability for any errors or inaccuracies.

Purchasers are solely responsible for the choice, selection, and use of TSC products and TSC assumes no liability for application assistance or the design of Purchasers' products.

Information contained herein is intended to provide a product description only. No license, express or implied, to any intellectual property rights is granted by this document. Except as provided in TSC's terms and conditions of sale for such products, TSC assumes no liability whatsoever, and disclaims any express or implied warranty, relating to sale and/or use of TSC products including liability or warranties relating to fitness for a particular purpose, merchantability, or infringement of any patent, copyright, or other intellectual property right.

The products shown herein are not designed for use in medical, life-saving, or life-sustaining applications. Customers using or selling these products for use in such applications do so at their own risk and agree to fully indemnify TSC for any damages resulting from such improper use or sale.

# Mouser Electronics

Authorized Distributor

Click to View Pricing, Inventory, Delivery & Lifecycle Information:

## Taiwan Semiconductor:

[SMBJ100A](#) [SMBJ100CA](#) [SMBJ10A](#) [SMBJ10CA](#) [SMBJ110A](#) [SMBJ110CA](#) [SMBJ11A](#) [SMBJ11CA](#) [SMBJ120A](#)  
[SMBJ120CA](#) [SMBJ12A](#) [SMBJ12CA](#) [SMBJ130A](#) [SMBJ130CA](#) [SMBJ13A](#) [SMBJ13CA](#) [SMBJ14A](#) [SMBJ14CA](#)  
[SMBJ150A](#) [SMBJ150CA](#) [SMBJ15A](#) [SMBJ15CA](#) [SMBJ160A](#) [SMBJ160CA](#) [SMBJ16A](#) [SMBJ16CA](#) [SMBJ170A](#)  
[SMBJ170CA](#) [SMBJ17A](#) [SMBJ17CA](#) [SMBJ18A](#) [SMBJ18CA](#) [SMBJ20A](#) [SMBJ20CA](#) [SMBJ22A](#) [SMBJ22CA](#)  
[SMBJ24A](#) [SMBJ24CA](#) [SMBJ26A](#) [SMBJ26CA](#) [SMBJ28A](#) [SMBJ28CA](#) [SMBJ30A](#) [SMBJ30CA](#) [SMBJ33A](#)  
[SMBJ33CA](#) [SMBJ36A](#) [SMBJ36CA](#) [SMBJ40A](#) [SMBJ40CA](#) [SMBJ43A](#) [SMBJ43CA](#) [SMBJ45A](#) [SMBJ45CA](#)  
[SMBJ48A](#) [SMBJ48CA](#) [SMBJ51A](#) [SMBJ51CA](#) [SMBJ54A](#) [SMBJ54CA](#) [SMBJ58A](#) [SMBJ58CA](#) [SMBJ60A](#)  
[SMBJ60CA](#) [SMBJ64A](#) [SMBJ64CA](#) [SMBJ70A](#) [SMBJ70CA](#) [SMBJ75A](#) [SMBJ75CA](#) [SMBJ78A](#) [SMBJ78CA](#)  
[SMBJ85A](#) [SMBJ85CA](#) [SMBJ90A](#) [SMBJ90CA](#)