

2A, 200V - 1000V Standard Surface Mount Rectifier

FEATURES

- Glass passivated chip junction
- Ideal for automated placement
- Low reverse leakage
- Moisture sensitivity level: level 1, per J-STD-020
- RoHS Compliant
- Halogen-free according to IEC 61249-2-21

APPLICATIONS

- DC to DC converter
- Switching mode converters and inverters
- General purpose

MECHANICAL DATA

- Case: SOD-123FL
- Molding compound meets UL 94V-0 flammability rating
- Terminal: Matte tin plated leads, solderable per J-STD-002
- Meet JESD 201 class 1 whisker test
- Polarity: Indicated by cathode band
- Weight: 0.016g (approximately)

KEY PARAMETERS		
PARAMETER	VALUE	UNIT
I_F	2	A
V_{RRM}	200 - 1000	V
I_{FSM}	40	A
$T_{J\ MAX}$	150	°C
Package	SOD-123FL	
Configuration	Single die	



SOD-123FL



ABSOLUTE MAXIMUM RATINGS (T _A = 25°C unless otherwise noted)								
PARAMETER		SYMBOL	S2DFL	S2GFL	S2JFL	S2KFL	S2MFL	UNIT
Marking code on the device			S2DF	S2GF	S2JF	S2KF	S2MF	
Repetitive peak reverse voltage		V _{RRM}	200	400	600	800	1000	V
Reverse voltage, total rms value		V _{R(RMS)}	140	280	420	560	700	V
Forward current		I _F	2					A
Surge peak forward current, single half sine-wave superimposed on rated load	t = 8.3ms	I _{FSM}	40					A
	t = 1.0ms		100					A
Junction temperature		T _J	-55 to +150					°C
Storage temperature		T _{STG}	-55 to +150					°C

THERMAL PERFORMANCE

PARAMETER	SYMBOL	TYP	UNIT
Junction-to-lead thermal resistance	$R_{\theta JL}$	81	°C/W
Junction-to-ambient thermal resistance	$R_{\theta JA}$	116	°C/W
Junction-to-case thermal resistance	$R_{\theta JC}$	69	°C/W

Thermal Performance Note: Units mounted on PCB (5mm x 5mm Cu pad test board)

ELECTRICAL SPECIFICATIONS ($T_A = 25^\circ\text{C}$ unless otherwise noted)

PARAMETER	CONDITIONS	SYMBOL	TYP	MAX	UNIT
Forward voltage ⁽¹⁾	$I_F = 1\text{A}, T_J = 25^\circ\text{C}$	V_F	0.90	-	V
	$I_F = 2\text{A}, T_J = 25^\circ\text{C}$		0.97	1.10	V
	$I_F = 1\text{A}, T_J = 125^\circ\text{C}$		0.81	-	V
	$I_F = 2\text{A}, T_J = 125^\circ\text{C}$		0.90	1.00	V
Reverse current @ rated V_R ⁽²⁾	$T_J = 25^\circ\text{C}$	I_R	-	5	μA
	$T_J = 125^\circ\text{C}$		-	100	μA
Junction capacitance	1MHz, $V_R = 4.0\text{V}$	C_J	10	-	pF

Notes:

1. Pulse test with $PW = 0.3\text{ms}$
2. Pulse test with $PW = 30\text{ms}$

ORDERING INFORMATION

ORDERING CODE ⁽¹⁾	PACKAGE	PACKING
S2xFL	SOD-123FL	10,000 / Tape & Reel

Notes:

1. "x" defines voltage from 200V(S2DFL) to 1000V(S2MFL)

CHARACTERISTICS CURVES

($T_A = 25^\circ\text{C}$ unless otherwise noted)

Fig.1 Forward Current Derating Curve

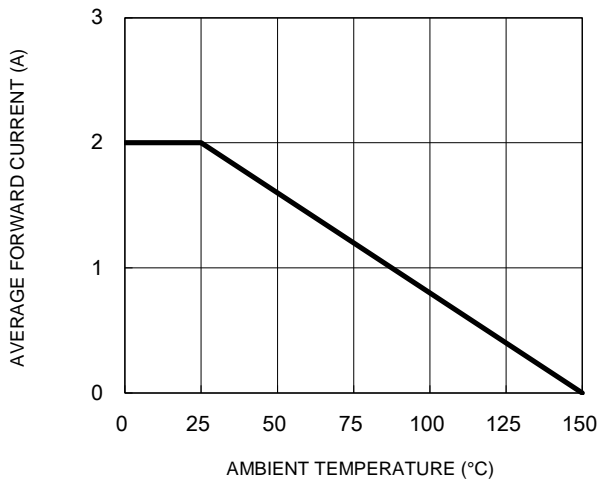


Fig.2 Typical Junction Capacitance

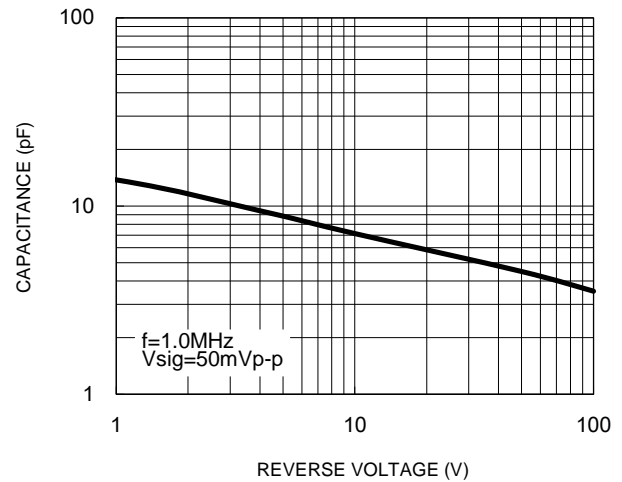


Fig.3 Typical Reverse Characteristics

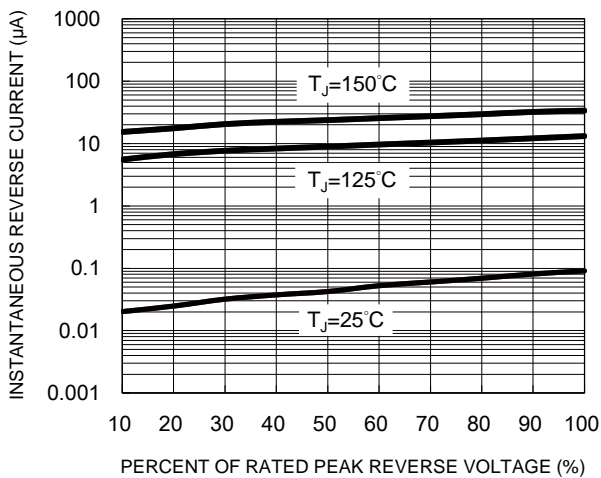


Fig.4 Typical Forward Characteristics

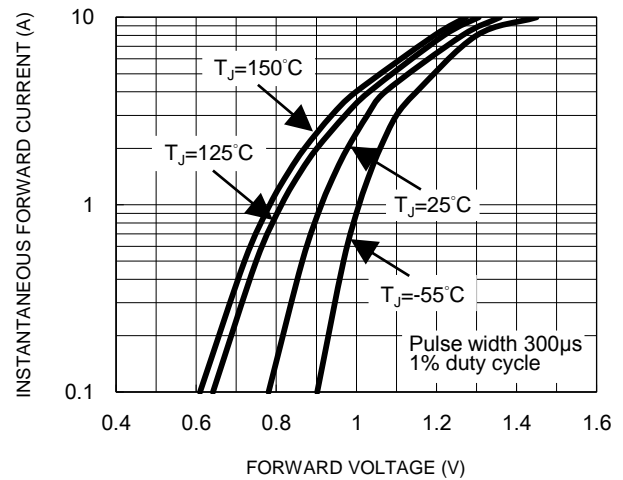
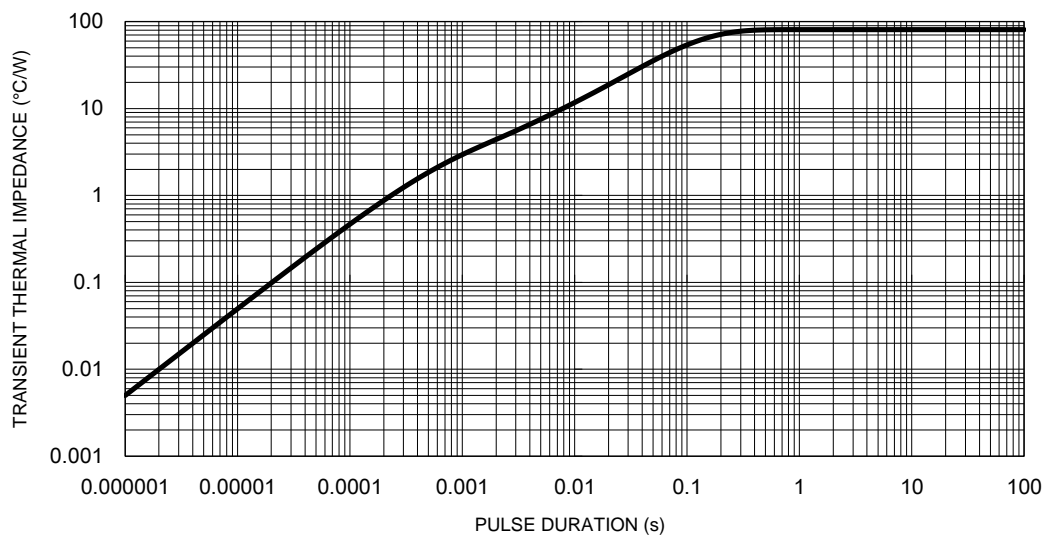
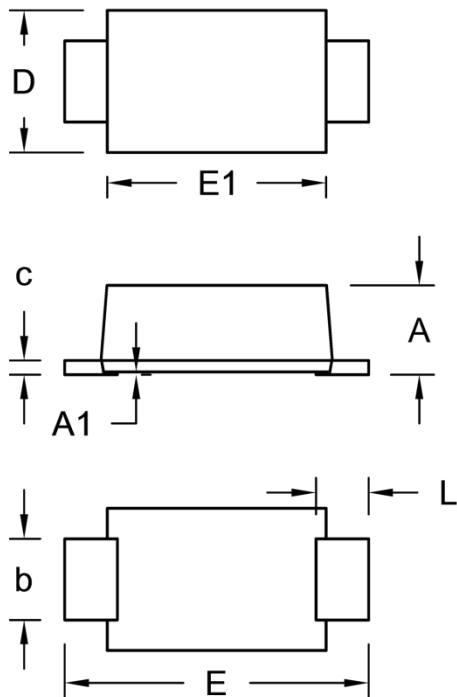


Fig.5 Typical Transient Thermal Impedance



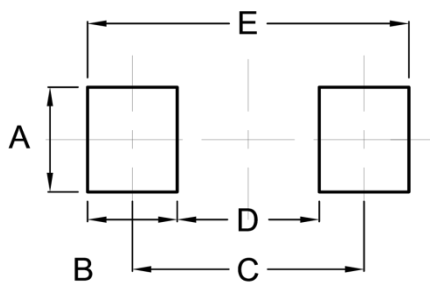
PACKAGE OUTLINE DIMENSIONS

SOD-123FL



DIM.	Unit (mm)		Unit (inch)	
	Min.	Max.	Min.	Max.
A	1.00	1.20	0.039	0.047
A1	0.02	0.05	0.001	0.002
b	0.90	1.10	0.035	0.043
c	0.10	0.25	0.004	0.010
D	1.60	1.90	0.063	0.075
E	3.60	3.90	0.142	0.154
E1	2.55	2.85	0.100	0.112
L	0.40	0.90	0.016	0.035

SUGGESTED PAD LAYOUT



Symbol	Unit (mm)	Unit (inch)
A	1.40	0.055
B	1.20	0.047
C	3.10	0.122
D	1.90	0.075
E	4.30	0.169

MARKING DIAGRAM



P/N = Marking Code
 YW = Date Code
 F = Factory Code

Notice

Specifications of the products displayed herein are subject to change without notice. TSC or anyone on its behalf, assumes no responsibility or liability for any errors or inaccuracies.

Purchasers are solely responsible for the choice, selection, and use of TSC products and TSC assumes no liability for application assistance or the design of Purchasers' products.

Information contained herein is intended to provide a product description only. No license, express or implied, to any intellectual property rights is granted by this document. Except as provided in TSC's terms and conditions of sale for such products, TSC assumes no liability whatsoever, and disclaims any express or implied warranty, relating to sale and/or use of TSC products including liability or warranties relating to fitness for a particular purpose, merchantability, or infringement of any patent, copyright, or other intellectual property right.

The products shown herein are not designed for use in medical, life-saving, or life-sustaining applications. Customers using or selling these products for use in such applications do so at their own risk and agree to fully indemnify TSC for any damages resulting from such improper use or sale.

Mouser Electronics

Authorized Distributor

Click to View Pricing, Inventory, Delivery & Lifecycle Information:

[Taiwan Semiconductor:](#)

[S2DFL](#) [S2GFL](#) [S2JFL](#) [S2KFL](#) [S2MFL](#)