

2A, 200V-1000V Fast Recovery Surface Mount Rectifiers

FEATURES

- Glass passivated junction chip
- Ideal for automated placement
- Low power loss, high efficiency
- Fast switching for high efficiency
- Low profile package
- Moisture sensitivity level: level 1, per J-STD-020
- RoHS Compliant
- Halogen-free according to IEC 61249-2-21

APPLICATIONS

- High frequency rectification
- Freewheeling application
- Switching mode converters and inverters, computer and telecommunication.

MECHANICAL DATA

- Case: Thin SMA
- Molding compound meets UL 94V-0 flammability rating
- Terminal: Pure tin plated leads, solderable per J-STD-002
- Meet JESD 201 class 2 whisker test
- Polarity: As marked
- Weight: 0.029 g (approximately)

KEY PARAMETERS		
PARAMETER	VALUE	UNIT
I_F	2	A
V_{RRM}	200 -1000	V
I_{FSM}	50	A
$T_{J\ MAX}$	150	°C
Package	Thin SMA	
Configuration	Single Die	



Thin SMA

ABSOLUTE MAXIMUM RATINGS ($T_A = 25^\circ\text{C}$ unless otherwise noted)								
PARAMETER	SYMBOL	RS2DAL	RS2GAL	RS2JAL	RS2KAL	RS2MAL	UNIT	
Marking code on the device		RS2DAL	RS2GAL	RS2JAL	RS2KAL	RS2MAL		
Repetitive peak reverse voltage	V_{RRM}	200	400	600	800	1000	V	
Reverse voltage, total rms value	$V_{R(RMS)}$	140	280	420	560	700	V	
Forward current	I_F	2					A	
Surge peak forward current, single half sine-wave superimposed on rated load per diode	8.3ms at $T_A = 25^\circ\text{C}$	I_{FSM}					50	A
	1.0ms at $T_A = 25^\circ\text{C}$						140	A
Junction temperature	T_J	-55 to +150					°C	
Storage temperature	T_{STG}	-55 to +150					°C	

THERMAL PERFORMANCE

PARAMETER	SYMBOL	TYP	UNIT
Junction-to-lead thermal resistance	$R_{\theta JL}$	16	°C/W
Junction-to-ambient thermal resistance	$R_{\theta JA}$	73	°C/W
Junction-to-case thermal resistance	$R_{\theta JC}$	14	°C/W

Thermal Performance Note: Units mounted on PCB (5mm x 5mm Cu pad test board)

ELECTRICAL SPECIFICATIONS ($T_A = 25^\circ\text{C}$ unless otherwise noted)

PARAMETER		CONDITIONS	SYMBOL	TYP	MAX	UNIT
Forward voltage ⁽¹⁾	RS2DAL RS2GAL RS2JAL	$I_F = 1.0\text{A}, T_J = 25^\circ\text{C}$	V_F	0.93	-	V
		$I_F = 2.0\text{A}, T_J = 25^\circ\text{C}$		1.01	1.30	V
		$I_F = 1.0\text{A}, T_J = 125^\circ\text{C}$		0.78	-	V
		$I_F = 2.0\text{A}, T_J = 125^\circ\text{C}$		0.88	1.02	V
	RS2KAL RS2MAL	$I_F = 1.0\text{A}, T_J = 25^\circ\text{C}$		0.98	-	V
		$I_F = 2.0\text{A}, T_J = 25^\circ\text{C}$		1.06	1.30	V
		$I_F = 1.0\text{A}, T_J = 125^\circ\text{C}$		0.83	-	V
		$I_F = 2.0\text{A}, T_J = 125^\circ\text{C}$		0.93	1.05	V
Reverse current @ rated V_R ⁽²⁾		$T_J = 25^\circ\text{C}$	I_R	-	1	μA
		$T_J = 125^\circ\text{C}$		-	40	μA
Reverse recovery time	RS2DAL RS2GAL	$I_F = 0.5\text{A}, I_R = 1.0\text{A}, I_{rr} = 0.25\text{A}$	t_{rr}	-	150	ns
	RS2JAL			-	250	ns
	RS2KAL RS2MAL			-	500	ns
Junction capacitance	RS2DAL RS2GAL RS2JAL	1 MHz, $V_R = 4.0\text{V}$	C_J	11	-	pF
	RS2KAL RS2MAL			10	-	pF

Notes:

- (1) Pulse test with $PW = 0.3\text{ ms}$
 (2) Pulse test with $PW = 30\text{ ms}$

ORDERING INFORMATION

ORDERING CODE ⁽¹⁾	PACKAGE	PACKING
RS2xAL M3G	Thin SMA	3,500 / 7" reel
RS2xAL M2G	Thin SMA	14,000 / 13" reel

Notes:

- (1) "x" defines voltage from 200V(RS2DAL) to 1000V(RS2MAL)

CHARACTERISTICS CURVES

($T_A = 25^\circ\text{C}$ unless otherwise noted)

Fig.1 Forward Current Derating Curve

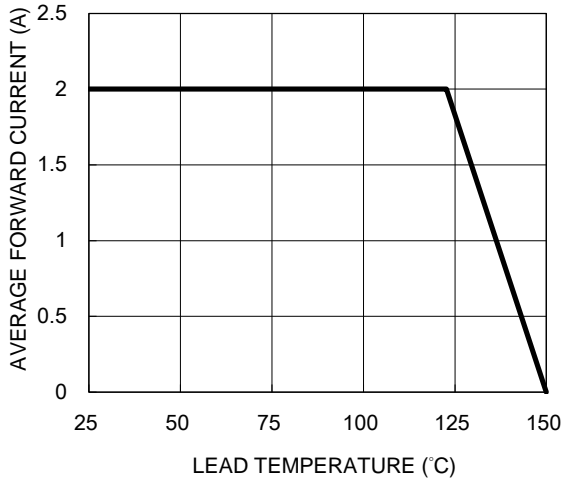


Fig.2 Typical Junction Capacitance

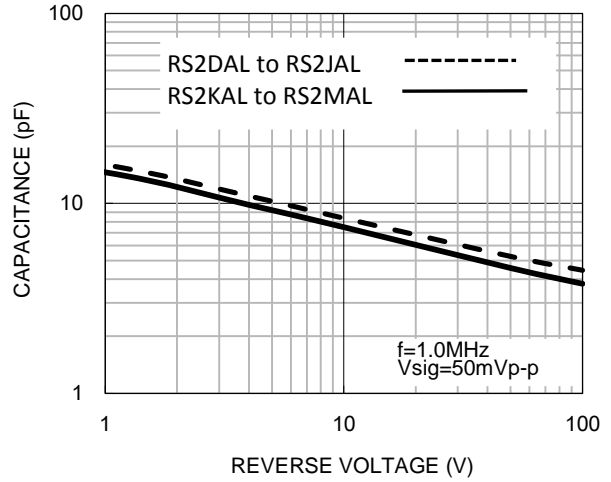


Fig.3 Typical Reverse Characteristics

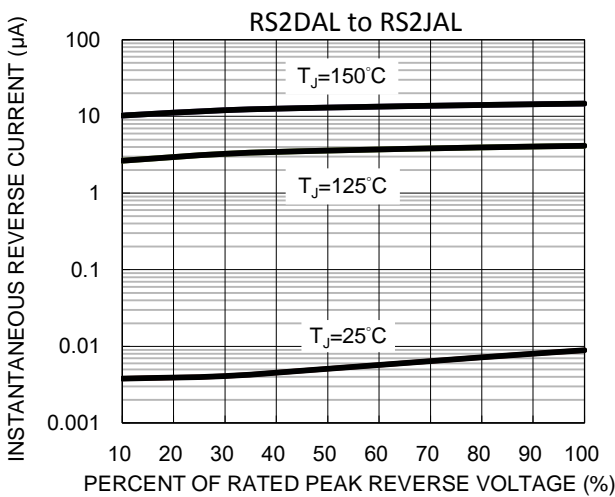


Fig.4 Typical Forward Characteristics

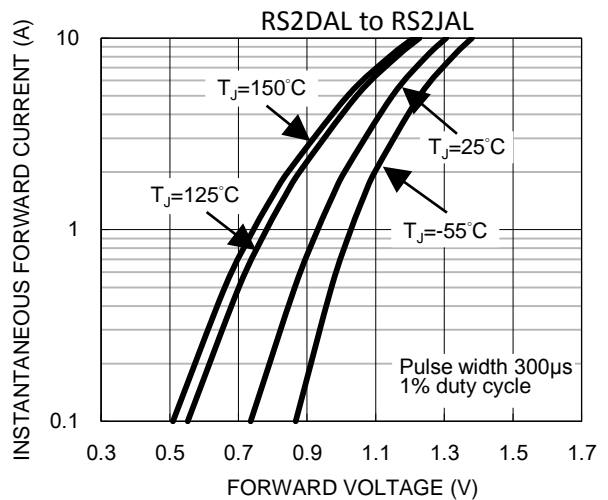


Fig.5 Typical Reverse Characteristics

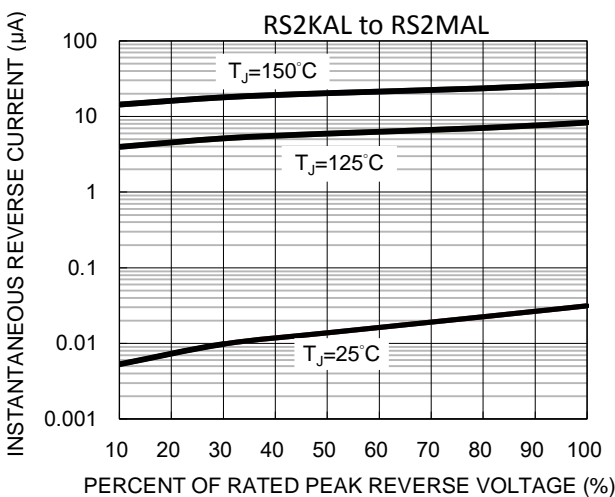


Fig.6 Typical Forward Characteristics

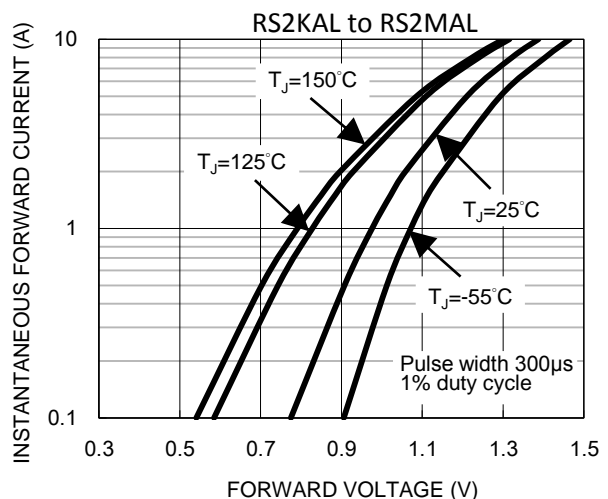
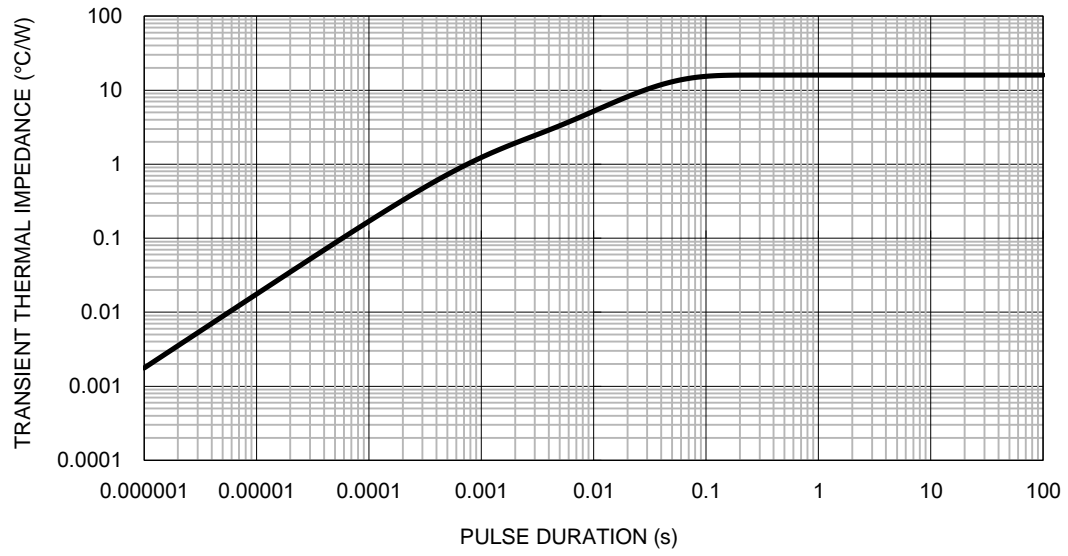
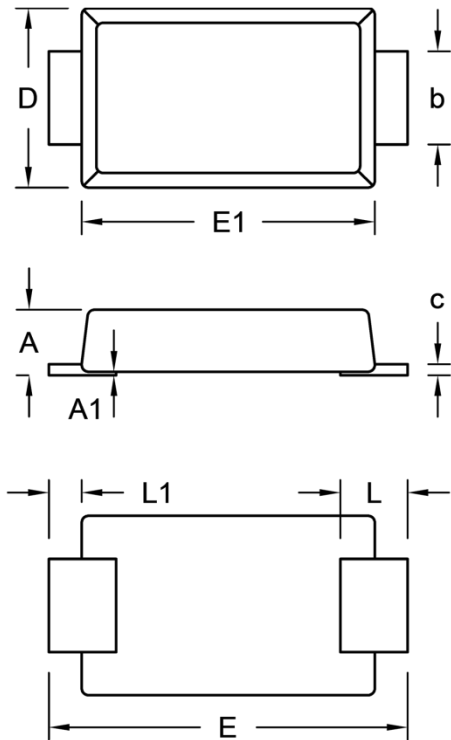


Fig.7 Typical Transient Thermal Impedance



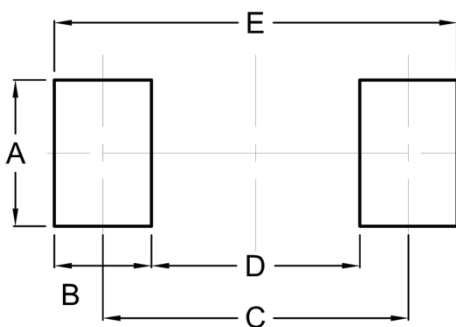
PACKAGE OUTLINE DIMENSIONS

Thin SMA



DIM.	Unit (mm)		Unit (inch)	
	Min.	Max.	Min.	Max.
A	0.90	1.00	0.035	0.039
A1	0.00	0.10	0.000	0.004
b	1.25	1.45	0.049	0.057
c	0.10	0.22	0.004	0.009
D	2.50	2.70	0.098	0.106
E	5.05	5.35	0.199	0.211
E1	4.15	4.35	0.163	0.171
L	0.75	1.20	0.030	0.047
L1	0.30	0.60	0.012	0.024

SUGGESTED PAD LAYOUT



Symbol	Unit (mm)	Unit (inch)
A	2.10	0.083
B	1.40	0.055
C	4.40	0.173
D	3.00	0.118
E	5.80	0.228

MARKING DIAGRAM



P/N = Marking Code
 YW = Date Code
 F = Factory Code

Notice

Specifications of the products displayed herein are subject to change without notice. TSC or anyone on its behalf, assumes no responsibility or liability for any errors or inaccuracies.

Purchasers are solely responsible for the choice, selection, and use of TSC products and TSC assumes no liability for application assistance or the design of Purchasers' products.

Information contained herein is intended to provide a product description only. No license, express or implied, to any intellectual property rights is granted by this document. Except as provided in TSC's terms and conditions of sale for such products, TSC assumes no liability whatsoever, and disclaims any express or implied warranty, relating to sale and/or use of TSC products including liability or warranties relating to fitness for a particular purpose, merchantability, or infringement of any patent, copyright, or other intellectual property right.

The products shown herein are not designed for use in medical, life-saving, or life-sustaining applications. Customers using or selling these products for use in such applications do so at their own risk and agree to fully indemnify TSC for any damages resulting from such improper use or sale.

Mouser Electronics

Authorized Distributor

Click to View Pricing, Inventory, Delivery & Lifecycle Information:

[Taiwan Semiconductor:](#)

[RS2GAL M3G](#) [RS2JAL M3G](#) [RS2KAL M3G](#) [RS2DAL M2G](#) [RS2GAL M2G](#) [RS2JAL M2G](#) [RS2KAL M2G](#) [RS2MAL](#)
[M2G](#)