

1A, 200V - 1000V Fast Recovery Surface Mount Rectifier

FEATURES

- AEC-Q101 qualified
- Glass passivated chip junction
- Ideal for automated placement
- Low power loss, high efficiency
- Fast switching for high efficiency
- Low profile package
- Moisture sensitivity level: level 1, per J-STD-020
- RoHS Compliant
- Halogen-free according to IEC 61249-2-21

KEY PARAMETERS

PARAMETER	VALUE	UNIT
I_F	1	A
V_{RRM}	200 - 1000	V
I_{FSM}	30	A
$T_{J\ MAX}$	150	°C
Package	Thin SMA	
Configuration	Single die	

APPLICATIONS

- Freewheeling
- Snubber
- DC/DC converters
- Automotive application



Thin SMA



MECHANICAL DATA

- Case: Thin SMA
- Molding compound meets UL 94V-0 flammability rating
- Terminal: Matte tin plated leads, solderable per J-STD-002
- Meet JESD 201 class 2 whisker test
- Polarity: Indicated by cathode band
- Weight: 0.029g (approximately)

ABSOLUTE MAXIMUM RATINGS ($T_A = 25^\circ\text{C}$ unless otherwise noted)

PARAMETER	SYMBOL	RS1D ALH	RS1G ALH	RS1J ALH	RS1K ALH	RS1M ALH	UNIT	
Marking code on the device		RS1DAH	RS1GAH	RS1JAH	RS1KAH	RS1MAH		
Repetitive peak reverse voltage	V_{RRM}	200	400	600	800	1000	V	
Reverse voltage, total rms value	$V_{R(RMS)}$	140	280	420	560	700	V	
Forward current	I_F	1					A	
Surge peak forward current, single half sine-wave superimposed on rated load	$t = 8.3\text{ms}$	I_{FSM}					30	A
	$t = 1.0\text{ms}$						100	A
Junction temperature	T_J	-55 to +150					°C	
Storage temperature	T_{STG}	-55 to +150					°C	

THERMAL PERFORMANCE

PARAMETER	SYMBOL	TYP	UNIT
Junction-to-lead thermal resistance	$R_{\theta JL}$	19	°C/W
Junction-to-ambient thermal resistance	$R_{\theta JA}$	81	°C/W
Junction-to-case thermal resistance	$R_{\theta JC}$	19	°C/W

Thermal Performance Note: Units mounted on PCB (5mm x 5mm Cu pad test board)

ELECTRICAL SPECIFICATIONS ($T_A = 25^\circ\text{C}$ unless otherwise noted)

PARAMETER		CONDITIONS	SYMBOL	TYP	MAX	UNIT
Forward voltage ⁽¹⁾	RS1DALH RS1GALH RS1JALH	$I_F = 0.5\text{A}, T_J = 25^\circ\text{C}$	V_F	0.90	-	V
		$I_F = 1.0\text{A}, T_J = 25^\circ\text{C}$		0.97	1.30	V
		$I_F = 0.5\text{A}, T_J = 125^\circ\text{C}$		0.75	-	V
		$I_F = 1.0\text{A}, T_J = 125^\circ\text{C}$		0.83	0.94	V
	RS1KALH RS1MALH	$I_F = 0.5\text{A}, T_J = 25^\circ\text{C}$		0.96	-	V
		$I_F = 1.0\text{A}, T_J = 25^\circ\text{C}$		1.04	1.30	V
		$I_F = 0.5\text{A}, T_J = 125^\circ\text{C}$		0.80	-	V
		$I_F = 1.0\text{A}, T_J = 125^\circ\text{C}$		0.90	1.11	V
Reverse current @ rated V_R ⁽²⁾		$T_J = 25^\circ\text{C}$	I_R	-	1	μA
		$T_J = 125^\circ\text{C}$		-	33	μA
Reverse recovery time	RS1DALH RS1GALH RS1JALH RS1KALH RS1MALH	$I_F = 0.5\text{A}, I_R = 1.0\text{A}, I_{rr} = 0.25\text{A}$	t_{rr}	-	150	ns
				-	250	ns
				-	500	ns
				-	-	-
Junction capacitance		1MHz, $V_R = 4.0\text{V}$	C_J	7	-	pF

Notes:

1. Pulse test with $PW = 0.3\text{ms}$
2. Pulse test with $PW = 30\text{ms}$

ORDERING INFORMATION

ORDERING CODE ⁽¹⁾	PACKAGE	PACKING
RS1xALH	Thin SMA	14,000 / Tape & Reel

Notes:

1. "x" defines voltage from 200V(RS1DALH) to 1000V(RS1MALH)

CHARACTERISTICS CURVES

($T_A = 25^\circ\text{C}$ unless otherwise noted)

Fig.1 Forward Current Derating Curve

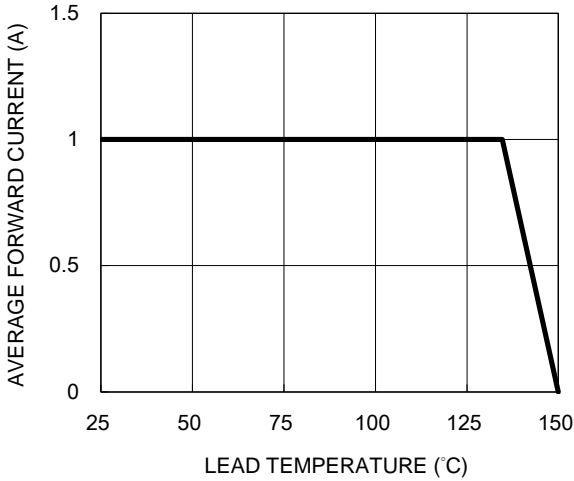


Fig.2 Typical Junction Capacitance

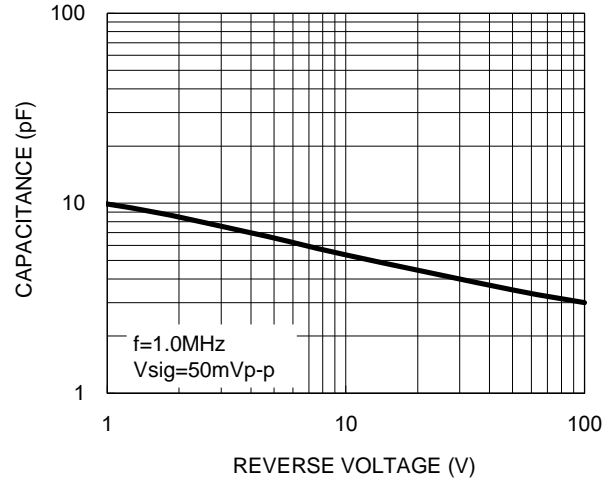


Fig.3 Typical Reverse Characteristics

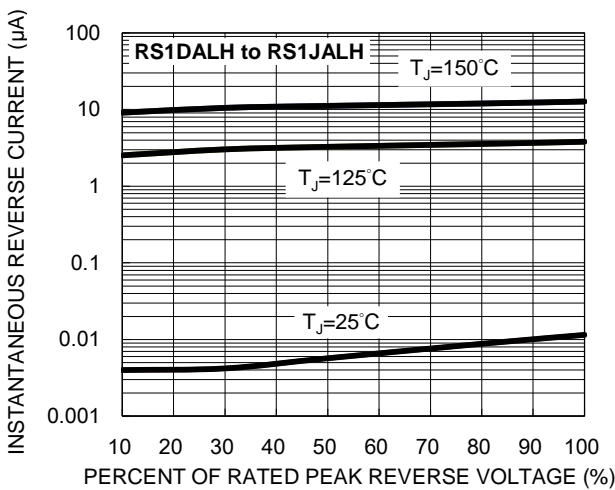


Fig.4 Typical Forward Characteristics

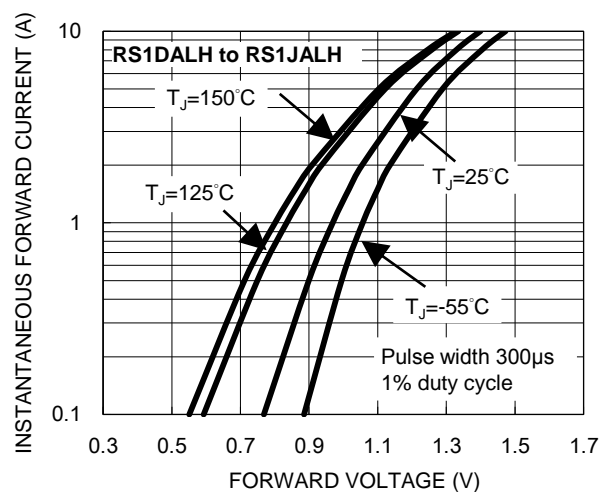


Fig.5 Typical Reverse Characteristics

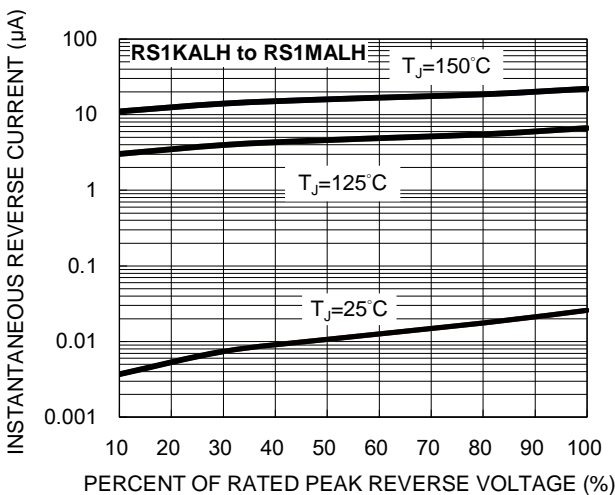
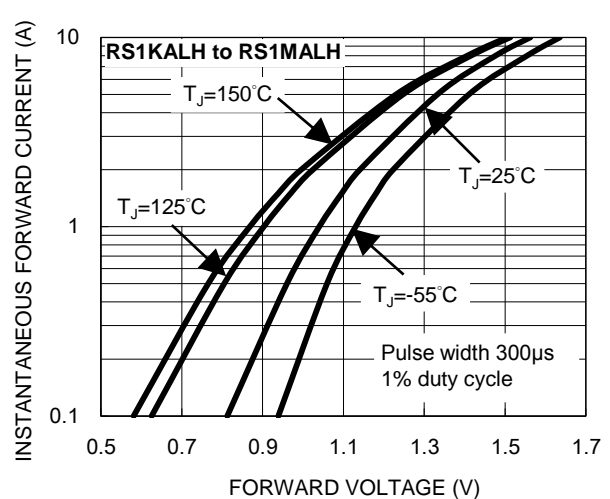


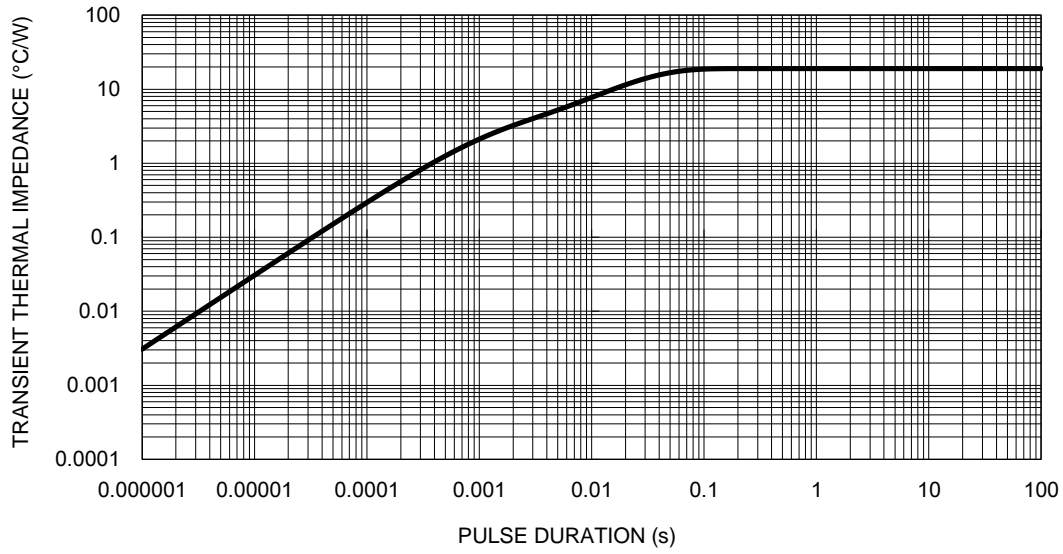
Fig.6 Typical Forward Characteristics



CHARACTERISTICS CURVES

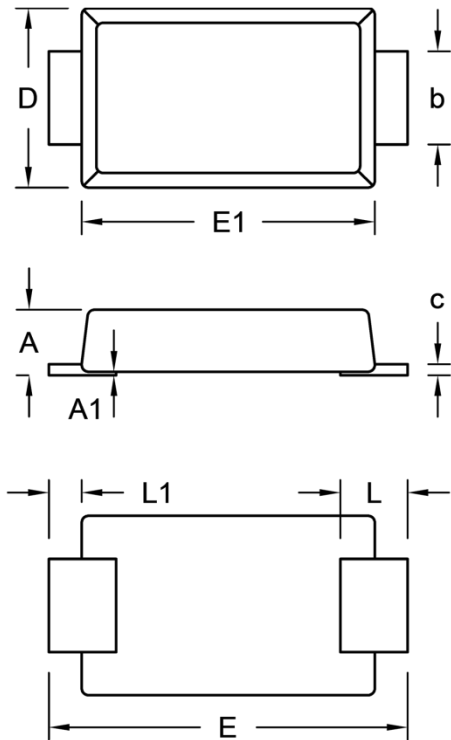
($T_A = 25^\circ\text{C}$ unless otherwise noted)

Fig.7 Typical Transient Thermal Impedance



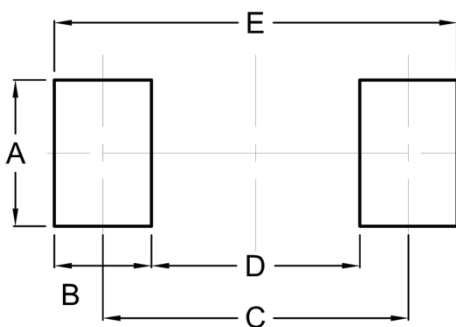
PACKAGE OUTLINE DIMENSIONS

Thin SMA



DIM.	Unit (mm)		Unit (inch)	
	Min.	Max.	Min.	Max.
A	0.90	1.00	0.035	0.039
A1	0.00	0.10	0.000	0.004
b	1.25	1.45	0.049	0.057
c	0.10	0.22	0.004	0.009
D	2.50	2.70	0.098	0.106
E	5.05	5.35	0.199	0.211
E1	4.15	4.35	0.163	0.171
L	0.75	1.20	0.030	0.047
L1	0.30	0.60	0.012	0.024

SUGGESTED PAD LAYOUT



Symbol	Unit (mm)	Unit (inch)
A	2.10	0.083
B	1.40	0.055
C	4.40	0.173
D	3.00	0.118
E	5.80	0.228

MARKING DIAGRAM



P/N = Marking Code
 YW = Date Code
 F = Factory Code

Notice

Specifications of the products displayed herein are subject to change without notice. TSC or anyone on its behalf, assumes no responsibility or liability for any errors or inaccuracies.

Purchasers are solely responsible for the choice, selection, and use of TSC products and TSC assumes no liability for application assistance or the design of Purchasers' products.

Information contained herein is intended to provide a product description only. No license, express or implied, to any intellectual property rights is granted by this document. Except as provided in TSC's terms and conditions of sale for such products, TSC assumes no liability whatsoever, and disclaims any express or implied warranty, relating to sale and/or use of TSC products including liability or warranties relating to fitness for a particular purpose, merchantability, or infringement of any patent, copyright, or other intellectual property right.

The products shown herein are not designed for use in medical, life-saving, or life-sustaining applications. Customers using or selling these products for use in such applications do so at their own risk and agree to fully indemnify TSC for any damages resulting from such improper use or sale.

Mouser Electronics

Authorized Distributor

Click to View Pricing, Inventory, Delivery & Lifecycle Information:

[Taiwan Semiconductor:](#)

[RS1DALH](#) [RS1GALH](#) [RS1JALH](#) [RS1KALH](#) [RS1MALH](#)