

5000W, 16V - 100V Surface Mount Transient Voltage Suppressor

FEATURES

- 5000W peak pulse power capability at 10/1000 μ s waveform
- Ideal for automated placement
- Photo glass passivated chip junction
- Excellent clamping capability
- Fast response time: Typically less than 1.0ps
- Moisture sensitivity level: level 1, per J-STD-020
- RoHS Compliant
- Halogen-free according to IEC 61249-2-21

APPLICATIONS

- I/O interface
- AC/DC power supply

MECHANICAL DATA

- Case: DO-214AB (SMC)
- Molding compound meets UL 94V-0 flammability rating
- Terminal: Matte tin plated leads, solderable per J-STD-002
- Meet JESD 201 class 2 whisker test
- Polarity: Indicated by cathode band
- Weight: 0.300g (approximately)

KEY PARAMETERS		
PARAMETER	VALUE	UNIT
V_{WM}	16 - 100	V
V_{BR} (uni-directional)	17.8 - 123	V
P_{PPSM}	5000	W
T_{JMAX}	175	°C
Package	DO-214AB (SMC)	
Configuration	Stacked die	


DO-214AB (SMC)


ABSOLUTE MAXIMUM RATINGS ($T_A = 25^\circ\text{C}$ unless otherwise noted)

PARAMETER	SYMBOL	VALUE	UNIT
Non-repetitive peak impulse power dissipation with 10/1000 μ s waveform ⁽¹⁾	P_{PK}	5000	W
Steady state power dissipation at $T_L = 75^\circ\text{C}$ ⁽²⁾	P_D	6.25	W
Forward Voltage @ $I_F = 100\text{A}$ for Uni-directional only ⁽³⁾	V_F	5	V
Junction temperature	T_J	-55 to +175	°C
Storage temperature	T_{STG}	-55 to +175	°C

Notes:

1. Non-repetitive current pulse per Fig.3 and derated above $T_A = 25^\circ\text{C}$ per Fig.1
2. Units mounted on PCB (16mm x 16mm Cu pad test board)
3. Pulse test with PW = 0.3ms

THERMAL PERFORMANCE

PARAMETER	SYMBOL	TYP	UNIT
Junction-to-lead thermal resistance	$R_{\theta JL}$	16	°C/W
Junction-to-ambient thermal resistance	$R_{\theta JA}$	61	°C/W
Junction-to-case thermal resistance	$R_{\theta JC}$	17	°C/W

Thermal Performance Note: Units mounted on PCB (16mm x 16mm Cu pad test board)

ELECTRICAL SPECIFICATIONS ($T_A = 25^\circ\text{C}$ unless otherwise noted)

Part number	Marking code	Breakdown voltage $V_{BR}@I_T$ (V) (Note 1)		Test current I_T (mA)	Working stand-off voltage V_{WM} (V)	Maximum blocking leakage current $I_{IB}@V_{WM}$ (μA) (Note 1)	Maximum peak impulse current I_{PP} (A)	Maximum clamping voltage $V_C@I_{PP}$ (V)	Maximum Temp. coefficient of V_{BR} $\alpha V_{BR}@I_T$ (mV/ $^\circ\text{C}$)
		Min	Max						
5.0SMDJ16A	5PET	17.8	19.7	1	16	50	193	26.0	0.096
5.0SMDJ17A	5PEU	18.9	20.9	1	17	20	181	27.6	0.097
5.0SMDJ18A	5PEV	20.0	22.1	1	18	10	172	29.2	0.098
5.0SMDJ20A	5PEW	22.2	24.5	1	20	5	155	32.4	0.099
5.0SMDJ22A	5PEX	24.4	26.9	1	22	5	141	35.5	0.100
5.0SMDJ24A	5PEZ	26.7	29.5	1	24	2	129	38.9	0.101
5.0SMDJ26A	5PFE	28.9	31.9	1	26	2	119	42.1	0.101
5.0SMDJ28A	5PFG	31.1	34.4	1	28	2	110	45.4	0.102
5.0SMDJ30A	5PFK	33.3	36.8	1	30	2	103	48.4	0.103
5.0SMDJ33A	5PFM	36.7	40.6	1	33	2	93.9	53.3	0.104
5.0SMDJ36A	5PFP	40.0	44.2	1	36	2	86.1	58.1	0.104
5.0SMDJ40A	5PFR	44.4	49.1	1	40	2	77.6	64.5	0.105
5.0SMDJ43A	5PFT	47.8	52.8	1	43	2	72.1	69.4	0.105
5.0SMDJ45A	5PFV	50.0	55.3	1	45	2	68.8	72.7	0.106
5.0SMDJ48A	5PFX	53.3	58.9	1	48	2	64.7	77.4	0.106
5.0SMDJ51A	5PFZ	56.7	62.7	1	51	2	60.7	82.4	0.107
5.0SMDJ54A	5PGE	60.0	66.3	1	54	2	57.5	87.1	0.107
5.0SMDJ58A	5PGG	64.4	71.2	1	58	2	53.5	93.6	0.107
5.0SMDJ60A	5PGK	66.7	73.7	1	60	2	51.7	96.8	0.108
5.0SMDJ64A	5PGM	71.1	78.6	1	64	2	48.6	103	0.108
5.0SMDJ70A	5PGP	77.8	86.0	1	70	2	44.3	113	0.108
5.0SMDJ75A	5PGR	83.3	92.1	1	75	2	41.4	121	0.108
5.0SMDJ78A	5PGT	86.7	95.8	1	78	2	39.7	126	0.108
5.0SMDJ85A	5PGV	94.4	104	1	85	2	36.5	137	0.110
5.0SMDJ90A	5PGX	100	111	1	90	2	34.3	146	0.110
5.0SMDJ100A	5PGZ	111	123	1	100	2	30.9	162	0.110

Note:

1. Pulse test with PW = 30ms

ORDERING INFORMATION

ORDERING CODE ⁽¹⁾	PACKAGE	PACKING
5.0SMDJx	DO-214AB (SMC)	3,000 / Tape & Reel

Notes:

1. "x" defines voltage from 16V(5.0SMDJ16A) to 100V(5.0SMDJ100A)

CHARACTERISTICS CURVES

($T_A = 25^\circ\text{C}$ unless otherwise noted)

Fig.1 Pulse Power or Current vs. Initial Junction Temperature



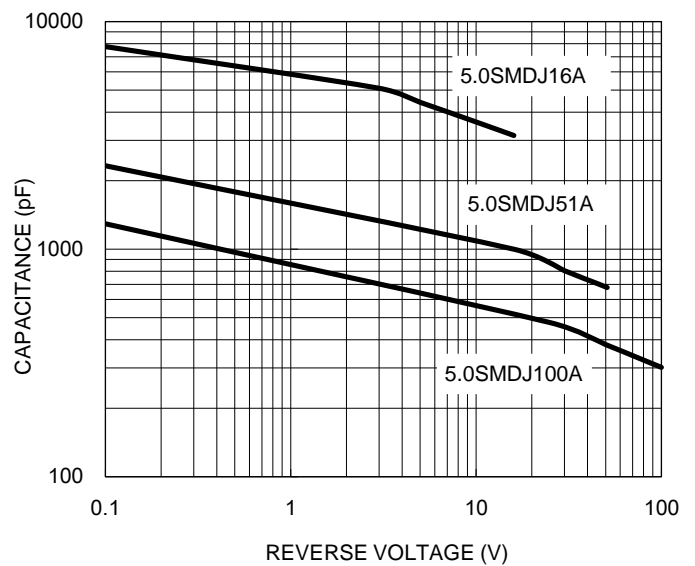
Fig.2 Power Derating Curve



Fig.3 Pulse Waveform

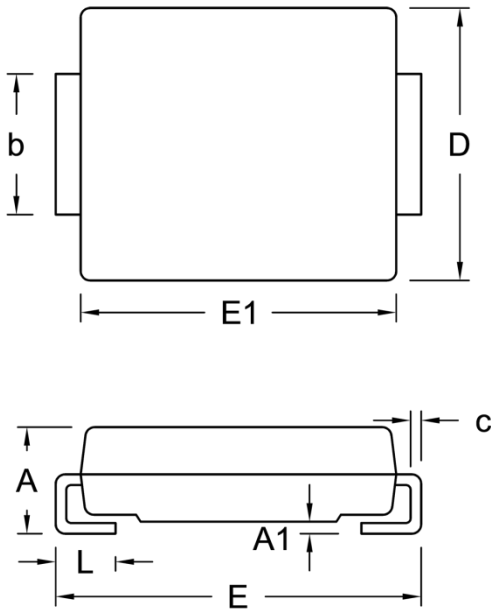


Fig.4 Typical Junction Capacitance



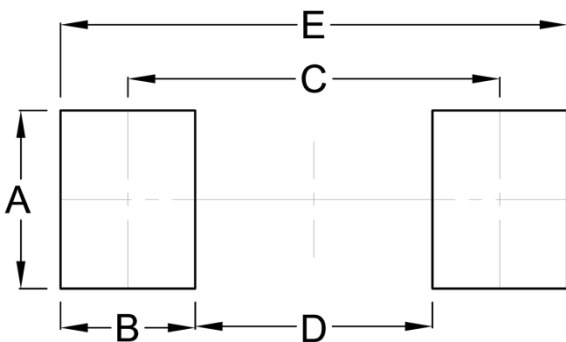
PACKAGE OUTLINE DIMENSIONS

DO-214AB (SMC)



DIM.	Unit (mm)		Unit (inch)	
	Min.	Max.	Min.	Max.
A	2.00	2.62	0.079	0.103
A1	0.10	0.20	0.004	0.008
b	2.90	3.20	0.114	0.126
c	0.15	0.31	0.006	0.012
D	5.59	6.22	0.220	0.245
E	7.75	8.13	0.305	0.320
E1	6.60	7.11	0.260	0.280
L	1.00	1.60	0.039	0.063

SUGGESTED PAD LAYOUT



Symbol	Unit (mm)	Unit (inch)
A	3.30	0.130
B	2.50	0.098
C	6.90	0.272
D	4.40	0.173
E	9.40	0.370

MARKING DIAGRAM



- P/N = Marking Code
- G = Green Compound
- YW = Date Code
- F = Factory Code

Notice

Specifications of the products displayed herein are subject to change without notice. TSC or anyone on its behalf, assumes no responsibility or liability for any errors or inaccuracies.

Purchasers are solely responsible for the choice, selection, and use of TSC products and TSC assumes no liability for application assistance or the design of Purchasers' products.

Information contained herein is intended to provide a product description only. No license, express or implied, to any intellectual property rights is granted by this document. Except as provided in TSC's terms and conditions of sale for such products, TSC assumes no liability whatsoever, and disclaims any express or implied warranty, relating to sale and/or use of TSC products including liability or warranties relating to fitness for a particular purpose, merchantability, or infringement of any patent, copyright, or other intellectual property right.

The products shown herein are not designed for use in medical, life-saving, or life-sustaining applications. Customers using or selling these products for use in such applications do so at their own risk and agree to fully indemnify TSC for any damages resulting from such improper use or sale.

Mouser Electronics

Authorized Distributor

Click to View Pricing, Inventory, Delivery & Lifecycle Information:

Taiwan Semiconductor:

[5.0SMDJ78A M6G](#) [5.0SMDJ43A M6G](#) [5.0SMDJ54A M6G](#) [5.0SMDJ64A M6G](#) [5.0SMDJ36A M6G](#) [5.0SMDJ22A M6G](#) [5.0SMDJ24A M6G](#) [5.0SMDJ100A M6G](#) [5.0SMDJ26A M6G](#) [5.0SMDJ28A M6G](#) [5.0SMDJ30A M6G](#) [5.0SMDJ20A M6G](#) [5.0SMDJ33A M6G](#) [5.0SMDJ28A R7G](#) [5.0SMDJ90A M6G](#) [5.0SMDJ60A M6G](#) [5.0SMDJ33A R7G](#) [5.0SMDJ60A R7G](#) [5.0SMDJ17A M6G](#) [5.0SMDJ58A R7G](#) [5.0SMDJ20A R7G](#) [5.0SMDJ70A M6G](#) [5.0SMDJ64A R7G](#) [5.0SMDJ18A R7G](#) [5.0SMDJ24A R7G](#) [5.0SMDJ17A R7G](#) [5.0SMDJ85A M6G](#) [5.0SMDJ30A R7G](#) [5.0SMDJ36A R7G](#) [5.0SMDJ78A R7G](#) [5.0SMDJ75A M6G](#) [5.0SMDJ51A R7G](#) [5.0SMDJ54A R7G](#) [5.0SMDJ75A R7G](#) [5.0SMDJ70A R7G](#) [5.0SMDJ45A M6G](#) [5.0SMDJ85A R7G](#) [5.0SMDJ51A M6G](#) [5.0SMDJ18A M6G](#) [5.0SMDJ22A R7G](#) [5.0SMDJ58A M6G](#) [5.0SMDJ100A R7G](#) [5.0SMDJ40A M6G](#) [5.0SMDJ16A R7G](#) [5.0SMDJ40A R7G](#) [5.0SMDJ26A R7G](#) [5.0SMDJ48A M6G](#) [5.0SMDJ16A M6G](#) [5.0SMDJ45A R7G](#) [5.0SMDJ43A R7G](#) [5.0SMDJ48A R7G](#) [5.0SMDJ90A R7G](#) [5.0SMDJ100A](#) [5.0SMDJ16A](#) [5.0SMDJ17A](#) [5.0SMDJ18A](#) [5.0SMDJ20A](#) [5.0SMDJ22A](#) [5.0SMDJ24A](#) [5.0SMDJ26A](#) [5.0SMDJ28A](#) [5.0SMDJ30A](#) [5.0SMDJ33A](#) [5.0SMDJ36A](#) [5.0SMDJ40A](#) [5.0SMDJ43A](#) [5.0SMDJ45A](#) [5.0SMDJ48A](#) [5.0SMDJ51A](#) [5.0SMDJ54A](#) [5.0SMDJ58A](#) [5.0SMDJ60A](#) [5.0SMDJ64A](#) [5.0SMDJ70A](#) [5.0SMDJ75A](#) [5.0SMDJ78A](#) [5.0SMDJ85A](#) [5.0SMDJ90A](#) [5X0SMDJ100A](#) [5X0SMDJ100AH](#) [5X0SMDJ16A](#) [5X0SMDJ16AH](#) [5X0SMDJ17A](#) [5X0SMDJ17AH](#) [5X0SMDJ18A](#) [5X0SMDJ18AH](#) [5X0SMDJ20A](#) [5X0SMDJ20AH](#) [5X0SMDJ22A](#) [5X0SMDJ22AH](#) [5X0SMDJ24A](#) [5X0SMDJ24AH](#) [5X0SMDJ26A](#) [5X0SMDJ26AH](#) [5X0SMDJ28A](#) [5X0SMDJ28AH](#) [5X0SMDJ30A](#) [5X0SMDJ30AH](#) [5X0SMDJ33A](#) [5X0SMDJ33AH](#)