

## 1500W, 6.8V - 200V Surface Mount Transient Voltage Suppressor

### FEATURES

- Ideal for automated placement
- Glass passivated chip junction
- Excellent clamping capability
- Fast response time: Typically less than 1.0ps
- Typical  $I_R$  less than  $1\mu A$  above 10V
- Meets ISO 7637-2 (Pulse 1/2a/2b/3a/3b)
- Moisture sensitivity level: level 1, per J-STD-020
- RoHS Compliant
- Halogen-free according to IEC 61249-2-21

KEY PARAMETERS		
PARAMETER	VALUE	UNIT
$V_{WM}$	5.5 - 171	V
$V_{BR}$	6.8 - 200	V
$P_{PK}$	1500	W
$T_{JMAX}$	150	°C
Package	DO-214AB (SMC)	
Configuration	Single die	

### APPLICATIONS

- Immunization of sensitive devices in telecommunications, consumer electronics, and industrial equipment from electrostatic discharge (ESD) and transient voltages induced by load switching and lightning



DO-214AB (SMC)

### MECHANICAL DATA

- Case: DO-214AB (SMC)
- Molding compound meets UL 94V-0 flammability rating
- Terminal: Matte tin plated leads, solderable per J-STD-002
- Meet JESD 201 class 2 whisker test
- Polarity: As marked
- Weight: 0.210g (approximately)

ABSOLUTE MAXIMUM RATINGS ( $T_A = 25^\circ C$ unless otherwise noted)			
PARAMETER	SYMBOL	VALUE	UNIT
Peak power dissipation at $T_A = 25^\circ C$ , $t_p = 1ms^{(1)}$	$P_{PK}$	1500	W
Steady state power dissipation at $T_A = 25^\circ C$	$P_D$	6.5	W
Peak forward surge current, 8.3ms single half sine-wave superimposed on rated load	$I_{FSM}$	200	A
Forward Voltage @ $I_F = 50A$ for Unidirectional only <sup>(2)</sup>	$V_F$	3.5 / 5.0	V
Junction temperature	$T_J$	-55 to +150	°C
Storage temperature	$T_{STG}$	-55 to +150	°C

#### Notes:

1. Non-repetitive current pulse per Fig.5 and derated above  $T_A = 25^\circ C$  per Fig.2
2.  $V_F = 3.5V$  on 1.5SMC6.8 - 1.5SMC91 and  $V_F = 5.0V$  on 1.5SMC100 - 1.5SMC200

#### Devices for Bipolar Applications

1. For bidirectional use C or CA suffix for types 1.5SMC6.8 - types 1.5SMC200A
2. Electrical characteristics apply in both directions

THERMAL PERFORMANCE			
PARAMETER	SYMBOL	TYP	UNIT
Junction-to-ambient thermal resistance	$R_{\theta JA}$	50	°C/W
Junction-to-case thermal resistance	$R_{\theta JC}$	15	°C/W

ELECTRICAL SPECIFICATIONS ( $T_A = 25^\circ\text{C}$ unless otherwise noted)									
Part number	Marking code	Breakdown voltage (Note 1) $V_{BR@I_T}$ (V)		Test current $I_T$ (mA)	Working stand-off voltage $V_{WM}$ (V)	Maximum blocking leakage current $I_R@V_{WM}$ ( $\mu\text{A}$ )	Maximum peak impulse current (Note 2) $I_{PPM}$ (A)	Maximum clamping voltage $V_C@I_{PPM}$ (V)	Maximum Temperature Coefficient of $V_{BR}$ (%/°C)
		Min	Max						
1.5SMC6.8	DDJ	6.12	7.48	10	5.50	1000	145	10.8	0.057
1.5SMC6.8A	DEJ	6.46	7.14	10	5.80	1000	150	10.5	0.057
1.5SMC7.5	DFJ	6.75	8.25	10	6.05	500	134	11.7	0.061
1.5SMC7.5A	DGJ	7.13	7.88	10	6.40	500	139	11.3	0.061
1.5SMC8.2	DHJ	7.38	9.02	10	6.63	200	126	12.5	0.065
1.5SMC8.2A	DKJ	7.79	8.61	10	7.02	200	130	12.1	0.065
1.5SMC9.1	DLJ	8.19	10.00	1.0	7.37	50	114	13.8	0.068
1.5SMC9.1A	DMJ	8.65	9.55	1.0	7.78	50	117	13.4	0.068
1.5SMC10	DNJ	9.00	11.00	1.0	8.10	10	105	15.0	0.073
1.5SMC10A	DPJ	9.50	10.5	1.0	8.55	10	108	14.5	0.073
1.5SMC11	DQJ	9.90	12.1	1.0	8.92	1	97	16.2	0.075
1.5SMC11A	DRJ	10.5	11.6	1.0	9.40	1	100	15.6	0.075
1.5SMC12	DSJ	10.8	13.2	1.0	9.72	1	91	17.3	0.078
1.5SMC12A	DTJ	11.4	12.6	1.0	10.2	1	94	16.7	0.078
1.5SMC13	DUJ	11.7	14.3	1.0	10.5	1	82	19.0	0.081
1.5SMC13A	DVJ	12.4	13.7	1.0	11.1	1	86	18.2	0.081
1.5SMC15	DWJ	13.5	16.5	1.0	12.1	1	71	22.0	0.084
1.5SMC15A	DXJ	14.3	15.8	1.0	12.8	1	74	21.2	0.084
1.5SMC16	DYJ	14.4	17.6	1.0	12.9	1	67	23.5	0.086
1.5SMC16A	DZJ	15.2	16.8	1.0	13.6	1	70	22.5	0.086
1.5SMC18	EDJ	16.2	19.8	1.0	14.5	1	59	26.5	0.088
1.5SMC18A	EEJ	17.1	18.9	1.0	15.3	1	60	25.5	0.088
1.5SMC20	EFJ	18.0	22.0	1.0	16.2	1	54	29.1	0.090
1.5SMC20A	EGJ	19.0	21.0	1.0	17.1	1	56	27.7	0.090
1.5SMC22	EHJ	19.8	24.2	1.0	17.8	1	49	31.9	0.092
1.5SMC22A	EKJ	20.9	23.1	1.0	18.8	1	51	30.6	0.092
1.5SMC24	ELJ	21.6	26.4	1.0	19.4	1	45	34.7	0.094
1.5SMC24A	EMJ	22.8	25.2	1.0	20.5	1	47	33.2	0.094
1.5SMC27	ENJ	24.3	29.7	1.0	21.8	1	40	39.1	0.096
1.5SMC27A	EPJ	25.7	28.4	1.0	23.1	1	42	37.5	0.096
1.5SMC30	EQJ	27.0	33.0	1.0	24.3	1	36	43.5	0.097
1.5SMC30A	ERJ	28.5	31.5	1.0	25.6	1	38	41.4	0.097
1.5SMC33	ESJ	29.7	36.3	1.0	26.8	1	33	47.7	0.098
1.5SMC33A	ETJ	31.4	34.7	1.0	28.2	1	34	45.7	0.098
1.5SMC36	EUJ	32.4	39.6	1.0	29.1	1	30	52.0	0.099
1.5SMC36A	EVJ	34.2	37.8	1.0	30.8	1	31	49.9	0.099
1.5SMC39	EWJ	35.1	42.9	1.0	31.6	1	27	56.4	0.100
1.5SMC39A	EXJ	37.1	41.0	1.0	33.3	1	29	53.9	0.100
1.5SMC43	EYJ	38.7	47.3	1.0	34.8	1	25	61.9	0.101
1.5SMC43A	EZJ	40.9	45.2	1.0	36.8	1	26	59.3	0.101
1.5SMC47	FDJ	42.3	51.7	1.0	38.1	1	23	67.8	0.101
1.5SMC47A	FEJ	44.7	49.4	1.0	40.2	1	24	64.8	0.101
1.5SMC51	FFJ	45.9	56.1	1.0	41.3	1	21	73.5	0.102

## ELECTRICAL SPECIFICATIONS (T<sub>A</sub> = 25°C unless otherwise noted)

Part number	Marking code	Breakdown voltage (Note 1) V <sub>BR</sub> @I <sub>T</sub> (V)		Test current I <sub>T</sub> (mA)	Working stand-off voltage V <sub>WM</sub> (V)	Maximum blocking leakage current I <sub>R</sub> @V <sub>WM</sub> (μA)	Maximum peak impulse current (Note 2) I <sub>PPM</sub> (A)	Maximum clamping voltage V <sub>C</sub> @I <sub>PPM</sub> (V)	Maximum Temperature Coefficient of V <sub>BR</sub> (%/°C)
		Min	Max						
1.5SMC51A	FGJ	48.5	53.6	1.0	43.6	1	22	70.1	0.102
1.5SMC56	FHJ	50.4	61.6	1.0	45.4	1	19	80.5	0.103
1.5SMC56A	FKJ	53.2	58.8	1.0	47.8	1	20	77.0	0.103
1.5SMC62	FLJ	55.8	68.2	1.0	50.2	1	17	89.0	0.104
1.5SMC62A	FMJ	58.9	65.1	1.0	53.0	1	18	85.0	0.104
1.5SMC68	FNJ	61.2	74.8	1.0	55.1	1	16	98.0	0.104
1.5SMC68A	FPJ	64.6	71.4	1.0	58.1	1	17	92.0	0.104
1.5SMC75	FQJ	67.5	82.5	1.0	60.7	1	14	108	0.105
1.5SMC75A	FRJ	71.3	78.8	1.0	64.1	1	15	103	0.105
1.5SMC82	FSJ	73.8	90.2	1.0	66.4	1	13	118	0.105
1.5SMC82A	FTJ	77.9	86.1	1.0	70.1	1	13.9	113	0.105
1.5SMC91	FUJ	81.9	100	1.0	73.7	1	12	131	0.106
1.5SMC91A	FVJ	86.5	95.5	1.0	77.8	1	12.6	125	0.106
1.5SMC100	FWJ	90	110	1.0	81.0	1	10.9	144	0.106
1.5SMC100A	FXJ	95	105	1.0	85.5	1	11.4	137	0.106
1.5SMC110	FYJ	99	121	1.0	89.2	1	9.9	158	0.107
1.5SMC110A	FZJ	105	116	1.0	94.0	1	10.3	152	0.107
1.5SMC120	GDJ	108	132	1.0	97.2	1	9.1	173	0.107
1.5SMC120A	GEJ	114	126	1.0	102.0	1	9.5	165	0.107
1.5SMC130	GFJ	117	143	1.0	105.0	1	8.4	187	0.107
1.5SMC130A	GGJ	124	137	1.0	111.0	1	8.7	179	0.107
1.5SMC150	GHJ	135	165	1.0	121.0	1	7.3	215	0.108
1.5SMC150A	GKJ	143	158	1.0	128.0	1	7.6	207	0.108
1.5SMC160	GLJ	144	176	1.0	130.0	1	6.8	230	0.108
1.5SMC160A	GMJ	152	168	1.0	136.0	1	7.1	219	0.108
1.5SMC170	GNJ	153	187	1.0	138.0	1	6.4	244	0.108
1.5SMC170A	GPJ	162	179	1.0	145.0	1	6.7	234	0.108
1.5SMC180	GQJ	162	198	1.0	146.0	1	6.1	258	0.108
1.5SMC180A	GRJ	171	189	1.0	154.0	1	6.4	246	0.108
1.5SMC200	GSJ	180	220	1.0	162.0	1	5.4	287	0.108
1.5SMC200A	GTJ	190	210	1.0	171.0	1	5.7	274	0.108

### Notes:

1. V<sub>BR</sub> measure after I<sub>T</sub> applied for 30ms, I<sub>T</sub> = square wave pulse or equivalent
2. Surge current waveform per Fig.5 and derate per Fig.2
3. For bipolar types having V<sub>WM</sub> of 10V and under, the I<sub>R</sub> limit is doubled
4. For bidirectional use C or CA suffix for types 1.5SMC6.8 - 1.5SMC200A
5. All terms and symbols are consistent with ANSI/IEEE C62.35

## ORDERING INFORMATION

ORDERING CODE <sup>(1)</sup>	PACKAGE	PACKING
1.5SMCx	DO-214AB (SMC)	3,000 / Tape & Reel

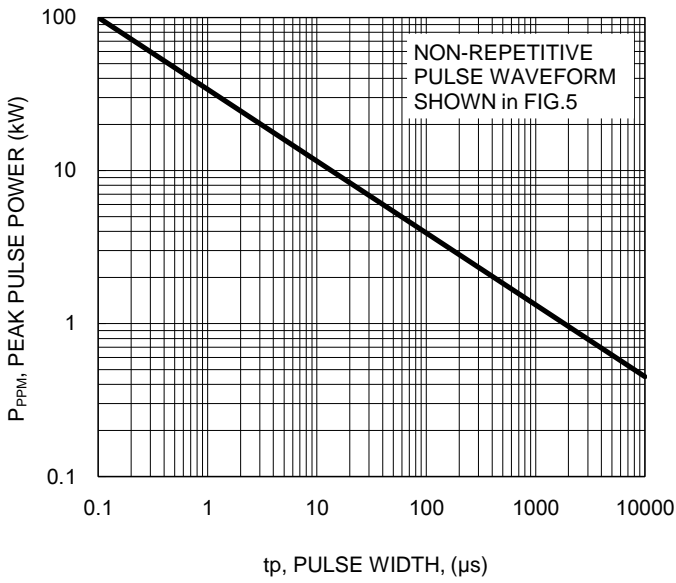
### Notes:

1. "x" defines voltage from 6.8V(1.5SMC6.8) to 200V(1.5SMC200)

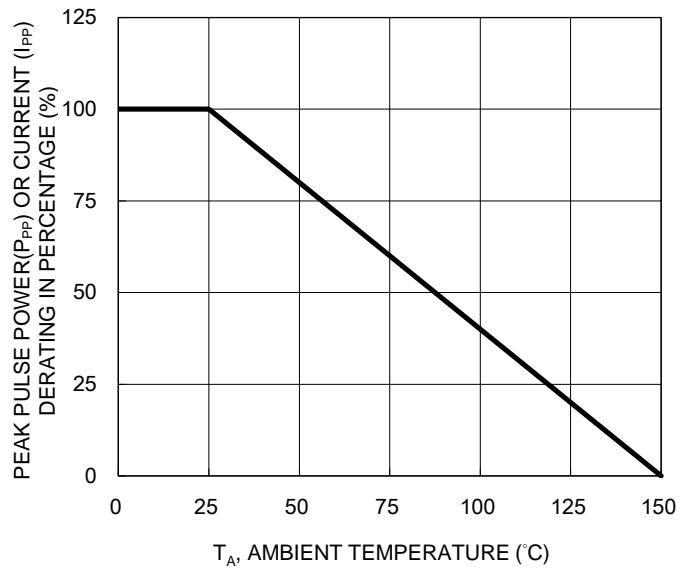
**CHARACTERISTICS CURVES**

( $T_A = 25^\circ\text{C}$  unless otherwise noted)

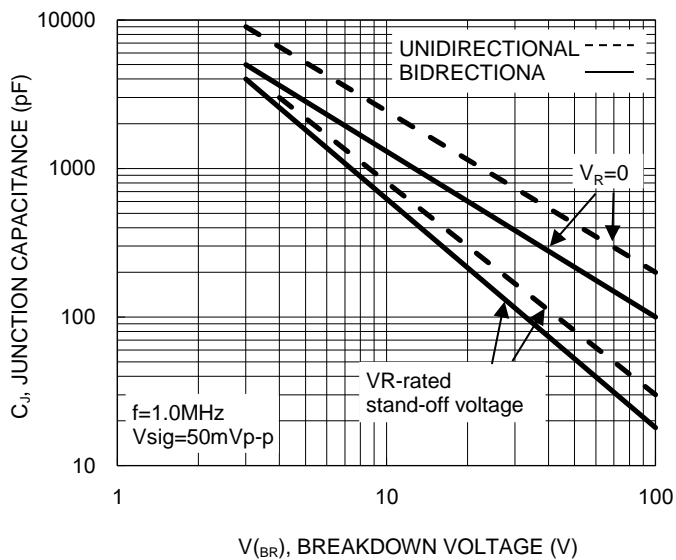
**Fig.1 Peak Pulse Power Rating Curve**



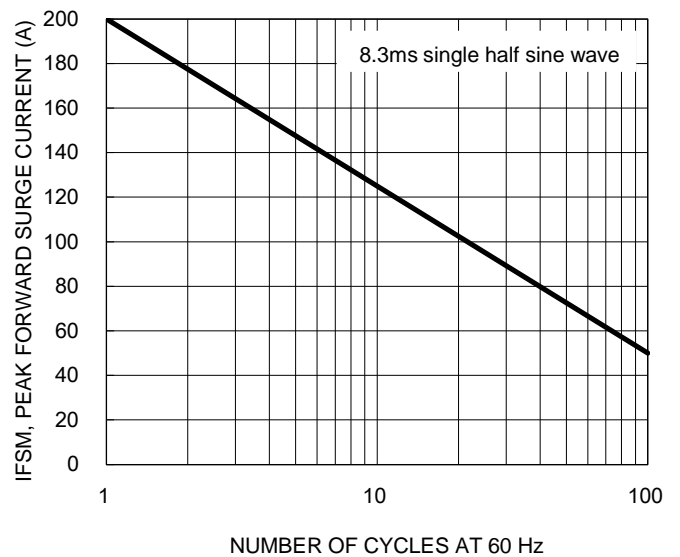
**Fig.2 Pulse Derating Curve**



**Fig.3 Typical Junction Capacitance**



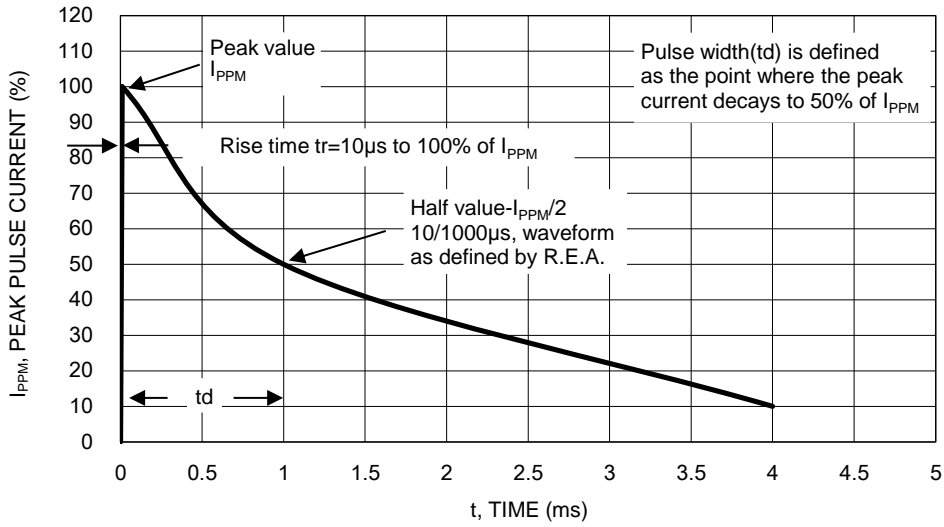
**Fig.4 Maximum Non-repetitive Forward Surge Current**



**CHARACTERISTICS CURVES**

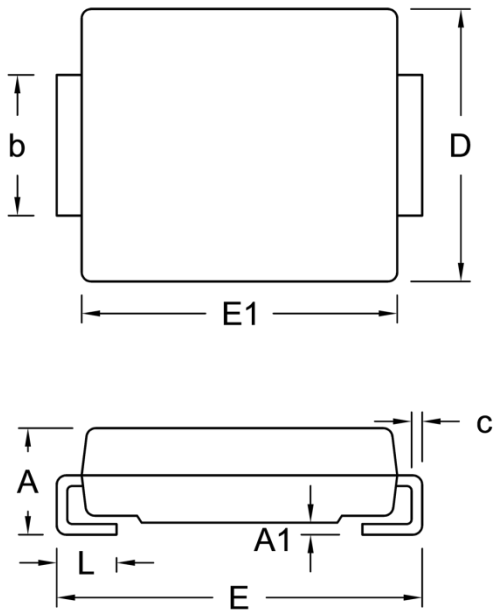
( $T_A = 25^\circ\text{C}$  unless otherwise noted)

**Fig.5 Clamping Power Pulse Waveform**



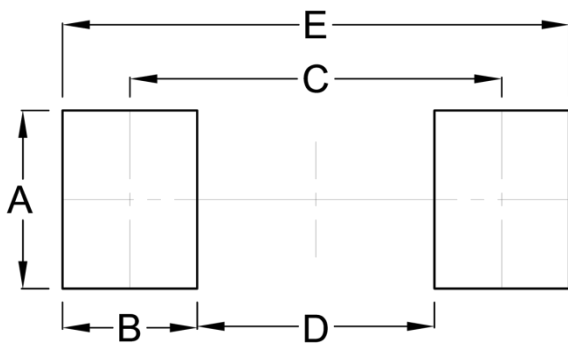
**PACKAGE OUTLINE DIMENSIONS**

DO-214AB (SMC)



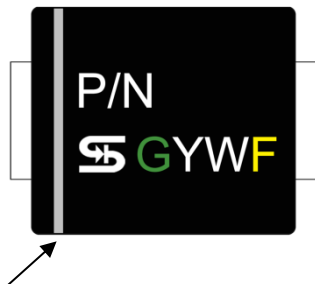
DIM.	Unit (mm)		Unit (inch)	
	Min.	Max.	Min.	Max.
A	2.00	2.62	0.079	0.103
A1	0.10	0.20	0.004	0.008
b	2.90	3.20	0.114	0.126
c	0.15	0.31	0.006	0.012
D	5.59	6.22	0.220	0.245
E	7.75	8.13	0.305	0.320
E1	6.60	7.11	0.260	0.280
L	1.00	1.60	0.039	0.063

**SUGGESTED PAD LAYOUT**



Symbol	Unit (mm)	Unit (inch)
A	3.30	0.130
B	2.50	0.098
C	6.90	0.272
D	4.40	0.173
E	9.40	0.370

**MARKING DIAGRAM**



Cathode band for uni-directional products only

- P/N = Marking Code
- G = Green Compound
- YW = Date Code
- F = Factory Code

## **Notice**

Specifications of the products displayed herein are subject to change without notice. TSC or anyone on its behalf, assumes no responsibility or liability for any errors or inaccuracies.

Purchasers are solely responsible for the choice, selection, and use of TSC products and TSC assumes no liability for application assistance or the design of Purchasers' products.

Information contained herein is intended to provide a product description only. No license, express or implied, to any intellectual property rights is granted by this document. Except as provided in TSC's terms and conditions of sale for such products, TSC assumes no liability whatsoever, and disclaims any express or implied warranty, relating to sale and/or use of TSC products including liability or warranties relating to fitness for a particular purpose, merchantability, or infringement of any patent, copyright, or other intellectual property right.

The products shown herein are not designed for use in medical, life-saving, or life-sustaining applications. Customers using or selling these products for use in such applications do so at their own risk and agree to fully indemnify TSC for any damages resulting from such improper use or sale.

# Mouser Electronics

Authorized Distributor

Click to View Pricing, Inventory, Delivery & Lifecycle Information:

## Taiwan Semiconductor:

[1.5SMC100A](#) [1.5SMC100CA](#) [1.5SMC120A](#) [1.5SMC120CA](#) [1.5SMC12A](#) [1.5SMC12CA](#) [1.5SMC150A](#)  
[1.5SMC150CA](#) [1.5SMC15A](#) [1.5SMC15CA](#) [1.5SMC18A](#) [1.5SMC18CA](#) [1.5SMC200A](#) [1.5SMC200CA](#) [1.5SMC220A](#)  
[1.5SMC220CA](#) [1.5SMC22A](#) [1.5SMC22CA](#) [1.5SMC24A](#) [1.5SMC24CA](#) [1.5SMC27A](#) [1.5SMC27CA](#) [1.5SMC30A](#)  
[1.5SMC30CA](#) [1.5SMC33A](#) [1.5SMC33CA](#) [1.5SMC36A](#) [1.5SMC36CA](#) [1.5SMC39A](#) [1.5SMC39CA](#) [1.5SMC43A](#)  
[1.5SMC43CA](#) [1.5SMC47A](#) [1.5SMC47CA](#) [1.5SMC51A](#) [1.5SMC51CA](#) [1.5SMC56A](#) [1.5SMC56CA](#) [1.5SMC62A](#)  
[1.5SMC62CA](#) [1.5SMC68A](#) [1.5SMC68CA](#) [1.5SMC6V8A](#) [1.5SMC6V8CA](#) [1.5SMC7V5A](#) [1.5SMC7V5CA](#) [1.5SMC20A](#)  
[1.5SMC20CA](#) [1.5SMC20CA R7](#) [1.5SMC20CA R6](#) [1.5SMC350A R7G](#) [1.5SMC150CA R6G](#) [1.5SMC100CA R6G](#)  
[1.5SMC120CA R6G](#) [1.5SMC300A R6](#) [1.5SMC6.8CA R6G](#) [1.5SMC440CA R6G](#) [1.5SMC36CA R6G](#) [1.5SMC16A R7](#)  
[1.5SMC75CA R6](#) [1.5SMC440CA R6](#) [1.5SMC300A R7](#) [1.5SMC350CA R6](#) [1.5SMC250A R7](#) [1.5SMC8.2CA R6G](#)  
[1.5SMC350CA R7G](#) [1.5SMC440A R7G](#) [1.5SMC220A R6G](#) [1.5SMC300CA R6G](#) [1.5SMC7.5CA R6](#) [1.5SMC400CA](#)  
[R7](#) [1.5SMC82CA R6](#) [1.5SMC440CA R7G](#) [1.5SMC62CA R6G](#) [1.5SMC12CA R6G](#) [1.5SMC9.1CA R6G](#) [1.5SMC30CA](#)  
[R6G](#) [1.5SMC16CA R6](#) [1.5SMC47CA R6G](#) [1.5SMC440CA R7](#) [1.5SMC68CA R6G](#) [1.5SMC24CA R6G](#) [1.5SMC39CA](#)  
[R6G](#) [1.5SMC440A R6](#) [1.5SMC220CA R7G](#) [1.5SMC16CA R7](#) [1.5SMC440A R7](#) [1.5SMC300CA R6](#) [1.5SMC15CA](#)  
[R6G](#) [1.5SMC250A R7G](#) [1.5SMC51CA R6G](#) [1.5SMC300CA R7](#) [1.5SMC43CA R6G](#) [1.5SMC400CA R7G](#)  
[1.5SMC350CA R6G](#) [1.5SMC250CA R6](#) [1.5SMC400A R7](#) [1.5SMC400A R6](#) [1.5SMC440A R6G](#) [1.5SMC250A R6G](#)