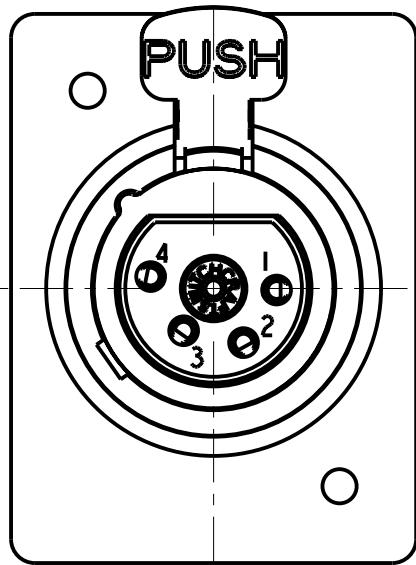
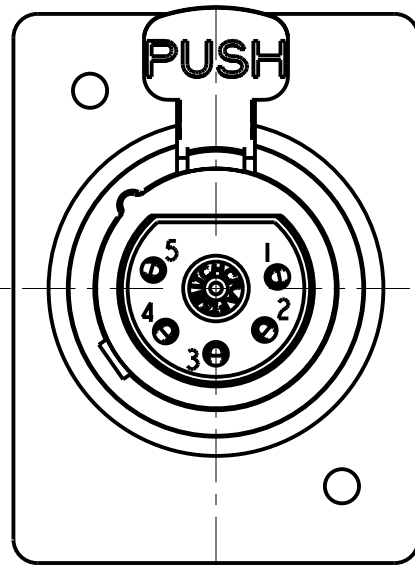


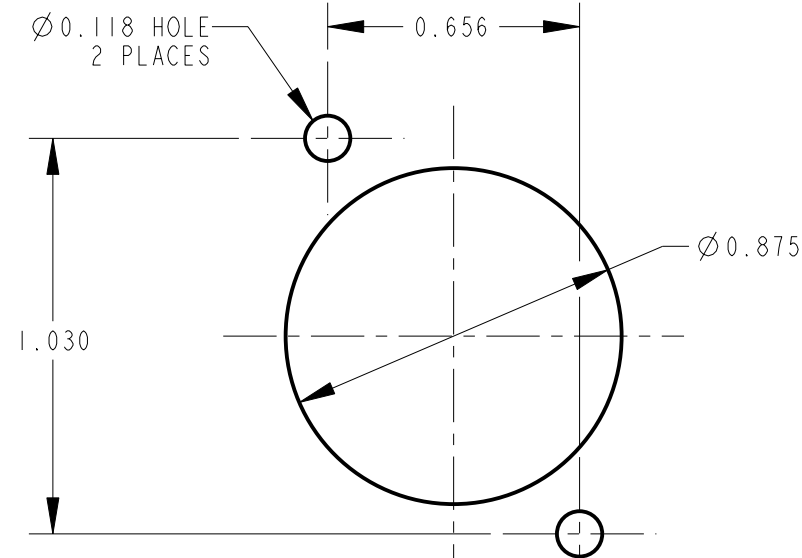
3 PIN



4 PIN

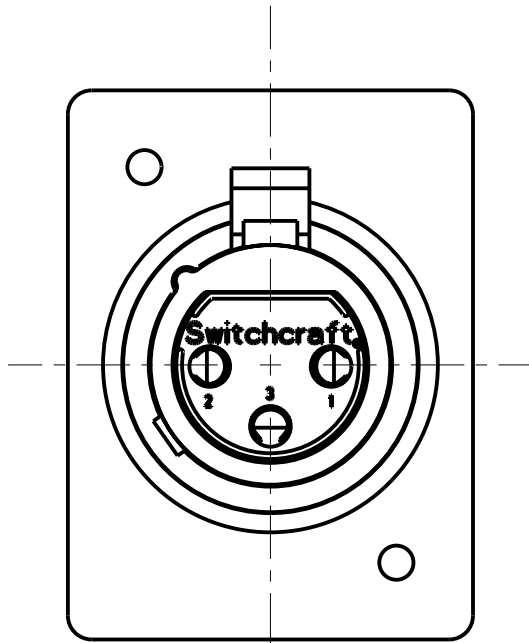
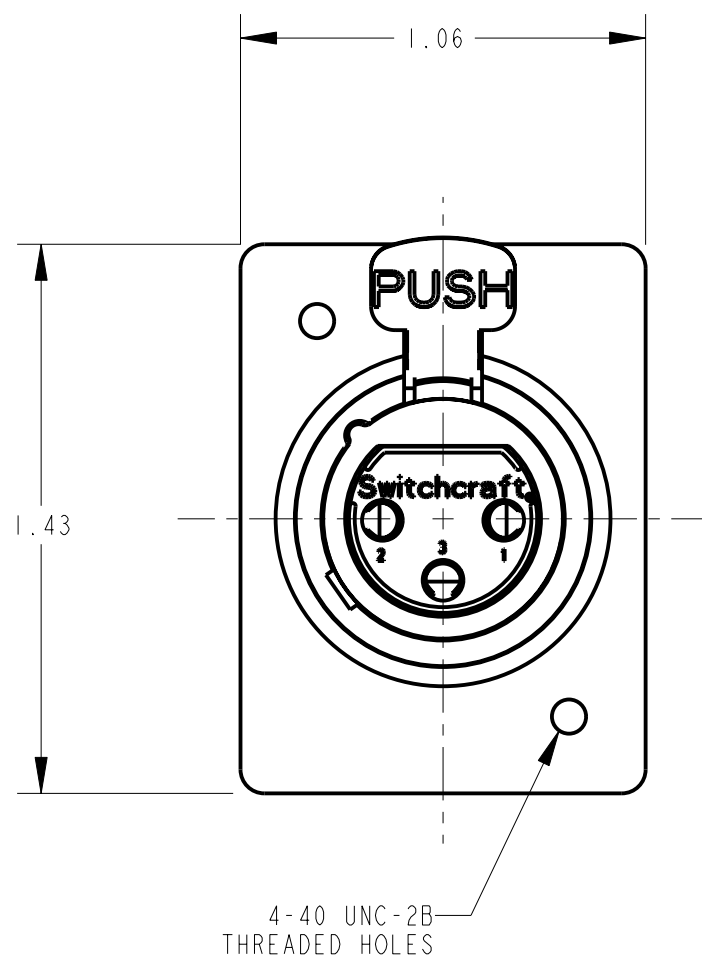
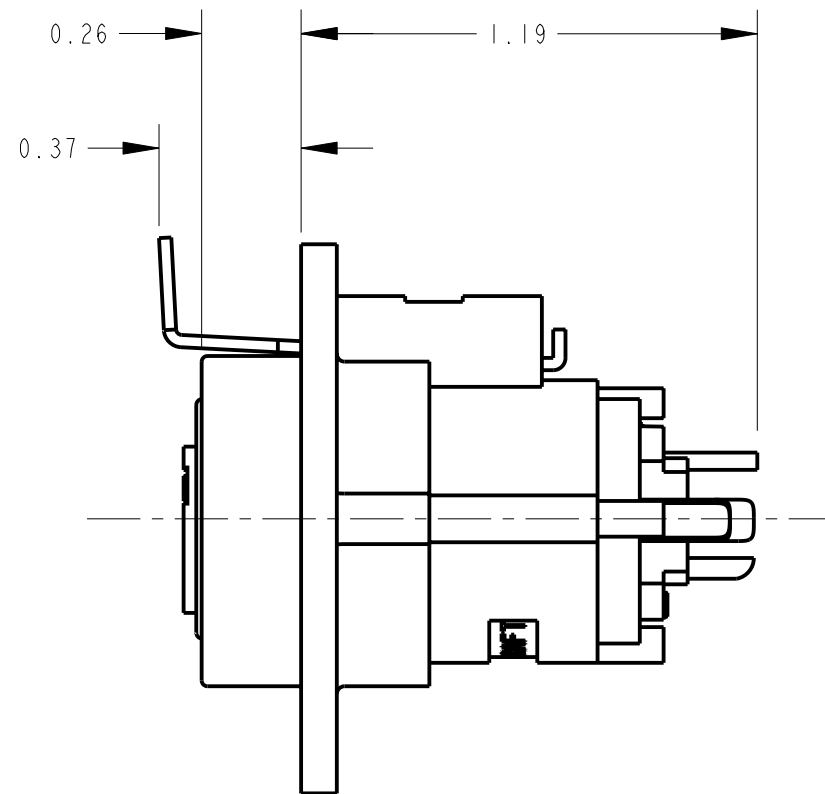
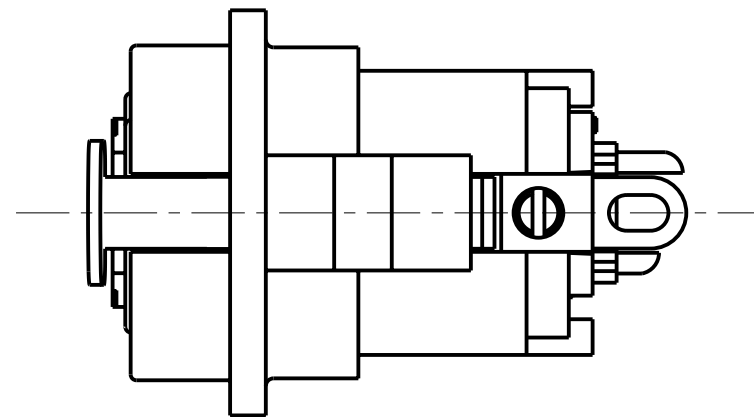


5 PIN

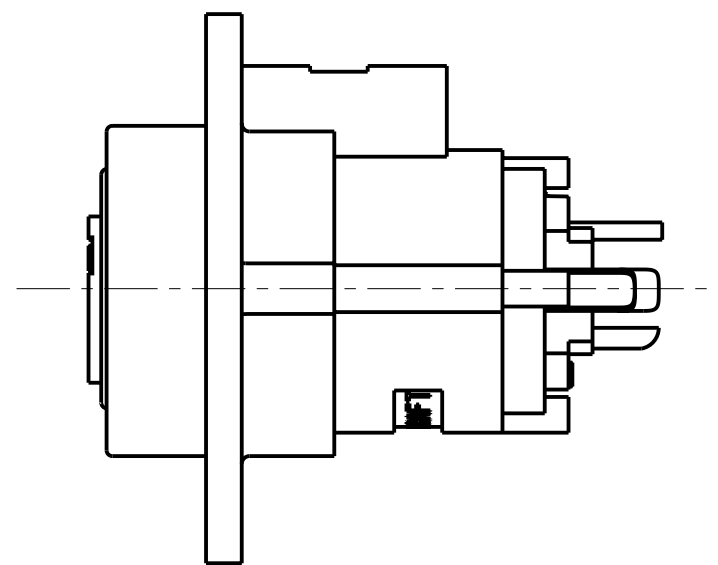


RECOMMENDED PANEL CUT-OUT

- NOTES:
- 1. MAX. PANEL THICKNESS - 0.25.
 - 2. ALL DIMENSIONS REF. UNLESS OTHERWISE SPECIFIED.



FRONT VIEW



SIDE VIEW

FIGURE 1
3 PIN DETENT VERSION

CUSTOMER DRAWING

STANDARD SERIES

SCREW - STAINLESS STEEL
SHELL - STAINLESS STEEL
LATCH BUTTON - ZINC, NICKEL PLATED
INSULATORS - POLYESTER, GREEN
SOLDER TERMINAL - BRASS, ELECTRO TIN PLATED
LATCH SPRING - STAINLESS STEEL
RECEPTACLE PIN - PHOSPHOR BRONZE, SILVER PLATED
HOUSING - ZINC, NICKEL PLATED

Y - F -

LATCH TYPE
BLANK = STANDARD LATCHLOCK
D = FAS-DIS-CONNECT DETENT (SEE FIG. 1)

NO. OF CONTACTS:
3 = 3 CONTACTS
4 = 4 CONTACTS
5 = 5 CONTACTS

G	20627	3-22-96	SG	SG	<div>★ STAR SYMBOL DENOTES CRITICAL DIMENSION</div> <div>UNLESS OTHERWISE SPECIFIED</div> <div>1. ALL DIMENSIONS IN INCHES - TWO PLACE DECIMALS ±0.01 - THREE PLACE DECIMALS ±0.005 - FRACTIONAL DIMENSIONS ±1/64 - ANGLES ±1° - ALL DIA. CONCENTRIC WITHIN 0.005 T.I.R.</div> <div>2. FEATURES ON THE SAME CENTERLINE MUST BE ALIGNED WITHIN ±0.002</div> <div>3. REMOVE ALL BURRS</div> <div>DO NOT SCALE DRAWING</div>	THIS DRAWING DESCRIBES A DESIGN CONSIDERED PROPRIETARY IN NATURE, DEVELOPED AND MANUFACTURED BY SWITCHCRAFT INC. AND IS RELEASED ON A CONFIDENTIAL BASIS FOR IDENTIFICATION PURPOSES ONLY.						
F	ECO #20118	8-16-95	GHJ	GHJ		SIZE	WIDTH		MULT	LBS/M	TEMPER	
E	ECO #20032	8-2-95	GHJ	GHJ		FINISH SPEC No.				MATERIAL SPEC No.		
D	ECO #19993	7-1-95	GHJ	GHJ		FIRST USED ON				SCALE 2:1		
C	ECO #19851	5-13-95	GHJ	GHJ		DATE DRAWN 30-Aug-94		BY SG	CHKD SG 8-31-94	APVD GHJ 8-31-94		
H	22895	10-1-12	TO	TJK	<div>Switchcraft®</div>						SHEET 1 OF 1	
REV	ECO NUMBER	DATE	BY	APVD	NAME Y SERIES FEMALE QG REAR PANEL MOUNT				PART No. Y_F SERIES		REV H	
REVISIONS												

Mouser Electronics

Authorized Distributor

Click to View Pricing, Inventory, Delivery & Lifecycle Information:

Switchcraft:

Y3FD