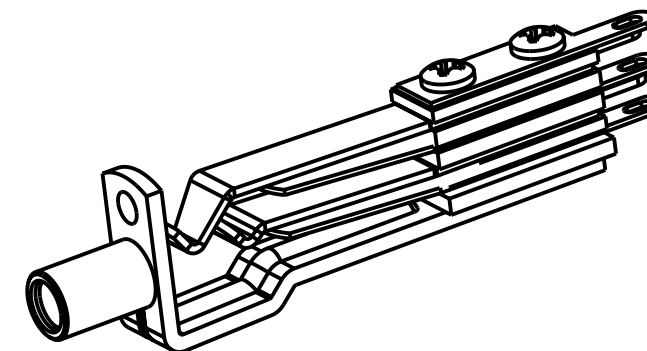
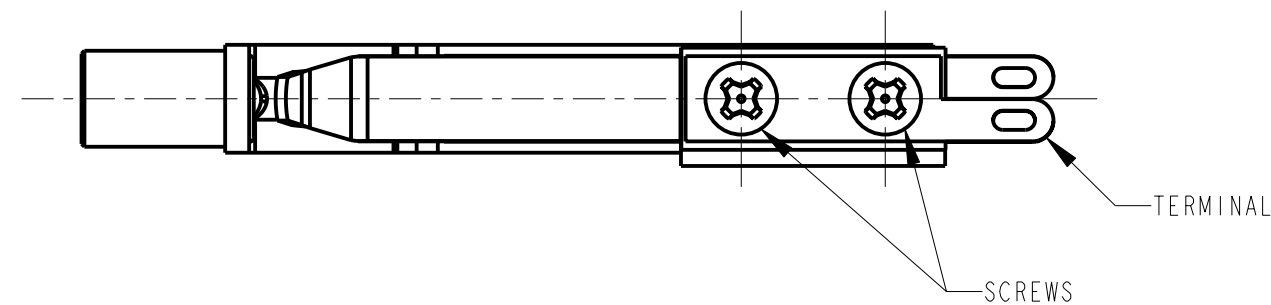
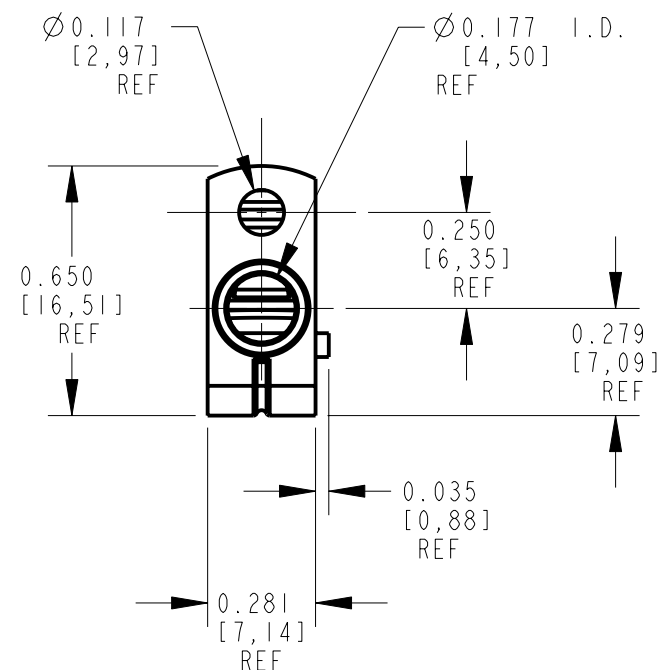
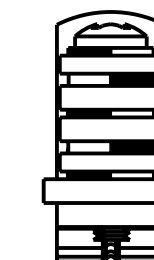
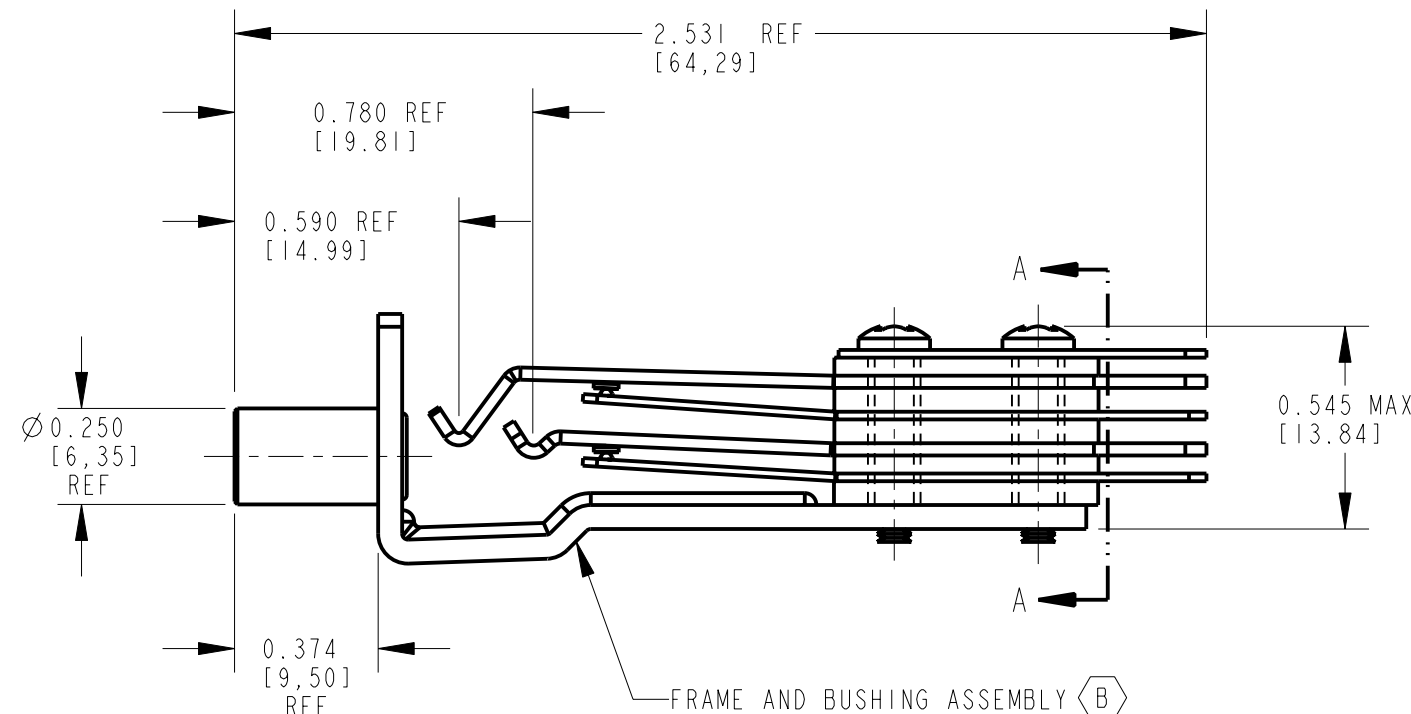


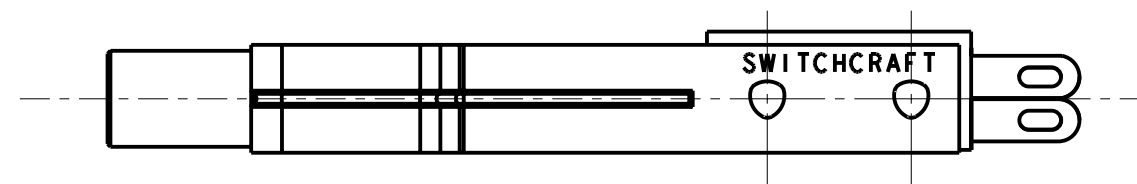
SCHEMATIC



SCALE 3:2



SECTION A-A



NOTES:

1. MATERIALS:

FRAME - STEEL, NICKEL PLATED
BUSHING - BRASS, NICKEL PLATED
SPRINGS - NICKEL SILVER, SPRING TEMPERED
CONTACTS - WELDED CROSS BAR, PALLADIUM
SPACERS - PHENOLIC, TYPE PBE-P
TERMINAL - HOT TIN DIPPED LEAD FREE
LIFTER/SPACER - THERMOPLASTIC
SCREWS - STEEL, ZINC ELECTROPLATE W/
YELLOW TRIVALENT CHROMATE

2. MATES WITH TT253 OR TT254 PLUG.

3. THIS PRODUCT IS RoHS COMPLIANT.

CUSTOMER DRAWING

					★ STAR SYMBOL DENOTES CRITICAL DIMENSION	THIS DRAWING DESCRIBES A DESIGN CONSIDERED PROPRIETARY IN NATURE, DEVELOPED AND MANUFACTURED BY SWITCHCRAFT INC. AND IS RELEASED ON A CONFIDENTIAL BASIS FOR IDENTIFICATION PURPOSES ONLY.										
					UNLESS OTHERWISE SPECIFIED 1. ALL DIMENSIONS IN INCHES -TWO PLACE DECIMALS ±0.01 -THREE PLACE DECIMALS ±0.005 -ANGLES ±1° -ALL DIA. CONCENTRIC WITHIN 0.005 T.I.R. 2. FEATURES ON THE SAME CENTERLINE MUST BE ALIGNED WITHIN ±0.002 3. REMOVE ALL BURRS	SIZE	WIDTH		MULT		LBS/M		TEMPER			
						FINISH SPEC No.				MATERIAL SPEC No.						
						FIRST USED ON				SCALE 2:1						
						DATE DRAWN 27-Oct-10		BY TO	CHKD TO 10-27-10		APVD TJK 10-28-10		<div>Switchcraft®</div> <div>SHEET OF </div>			
						NAME TELEPHONE JACK 3 CONDUCTOR, RoHS						PART No. TT34BX				
C	27710	5-31-16	TO	TJK												
B	25554	2-1-07	TO	TJK												
A	25269	1-26-06	TO	TJK												
REV	ECO NUMBER	DATE	BY	APVD												
REVISIONS					DO NOT SCALE DRAWING											

Mouser Electronics

Authorized Distributor

Click to View Pricing, Inventory, Delivery & Lifecycle Information:

[Switchcraft:](#)

[TT34BX](#)