

MOUNTING HARDWARE

WASHERS

Part Number	Description	Figure Number	Dimensions (Inches)				
			A	B	C	D	E
M-1018	Rigid Plastic Washer	3	5/8"	.384"	1/16"	1/32"	1/2"
P-1014-9	Internal Tooth Lockwasher	1	1/2"	3/8"	.022"		
P-1025	Internal Tooth Lockwasher	1	11/16"	3/8"	.035"		
P-1060-3	Internal Tooth Lockwasher	1	39/64"	15/32"	.018"		
P-1060-9	Internal Tooth Lockwasher	1	39/64"	15/32"	.018"		
P-1063-9	Steel Lockring Washer iridite finish over cadmium. Used as non-turn device on Series 16000 Telever Switch and R3000 and R13000 Lev-R-Switches.	4	See Drawing				
P-1475-3	Internal Tooth Lockwasher, Steel, Cadmium-Plated	1	13/32"	17/64"	.018"		
P-1476-1	Flat Washer - Brass - Nickel-Plated	2	5/8"	15/32"	.020"		
P-1617	Rigid Plastic Washer	2	5/16"	.195"	1/64"		
P-1618	Swedged Fiber Washer	3	11/32"	.193"	1/32"		
P-1716	Round Flat Plain Washer	2	1 1/16"	.828"	.031"	1/64"	.261"
P-1834	Internal Tooth Lockwasher	1	7/8"	.650"	.022"		
P-1971	Internal Tooth Lockwasher	1	1/2"	3/8"	.022"		
P-2061	Round Flat Plain Washer	2	.406"	.281"	.020"		
S-1022-1	Steel Washer Nickel-Plated	2	5/8"	3/8"	.020"		
S-1028	Rigid Plastic Washer (Brown)	2	5/8"	3/8"	.031"		
S-1029	Swedged Fiber Washer	3	5/8"	3/8"	1/32"		
S-1045-1	Copper Alloy Washer Nickel-Plated	2	5/8"	3/8"	.020"	1/32"	7/16"
S-1078	Swedged Grey Fiber Washer	3	5/8"	3/8"	3/64"		
S-1564	Swedged Grey Fiber Washer	3	7/16"	1/4"	1/32"	1/32"	5/16"
S-1790-1	Steel Washer Nickel-Plated	2	7/16"	1/4"	.015"	.025"	5/16"
S2207	Rigid Plastic Washer	2	7/16"	9/32"	.025"		
S-2957	Brass Washer Nickel-Plated	2	5/16"	13/64"	.010"		
S-3727	Steel Flat Washer Cadmium-Plated	2	7/8"	.630"	1/32"		
S-3997	Steel Washer Nickel-Plated	2	23/64"	1/4"	1/64"		
S-4263	Vulcanized Insulating Washer	3	.495"	.317"	.037"	.039"	.370"

SCREW AND TERMINAL

P-1069-5	Copper alloy solder terminal tinned for use with P-1070 screw below. Copper alloy terminal screws No. 2-64 for MIL-type plugs such as PJ-047, PJ-051 and PJ-055.	6	See Drawing				
P-1070		5	See Drawing				

NUTS

P-1000	Copper Alloy Locknut (Natural)	7	1/2"	3/8"	3/32"	(3/8"-32 Thd.)
P-1000-1	Copper Alloy Locknut Nickel-Plated	7	1/2"	3/8"	3/32"	(3/8"-32 Thd.)
P-1009-1	Copper Alloy Knurled Nut Nickel-Plated	8	1/2"	3/8"	1/16"	(3/8"-32 Thd.)
P-1053-1	Copper Alloy Locknut Nickel-Plated	7	9/16"	15/32"	1/16"	(15/32"-32 Thd.)
P-1064-1	Copper Alloy Locknut Nickel-Plated	7	9/16"	3/8"	3/32"	(3/8"-32 Thd.)
P-1150-1	Copper Alloy Locknut Nickel-Plated	7	3/8"	1/4"	1/16"	(1/4"-32 Thd.)
P-1378-1	Copper Alloy Knurled Nut Nickel-Plated	8	3/8"	1/4"	1/16"	(1/4"-32 Thd.)
P-1648	Steel Locknut Cadmium-Plated	7	3/4"	5/8"	3/32"	(5/8"-27 Thd.)
P-1717	Copper Alloy Locknut Nickel-Plated	7	5/16"	13/16"	1/8"	(13/16"-20 Thd.)
P-1970	Aluminum Knurled Nut – Black	8	1/2"	3/8"	1/16"	(3/8"-32 Thd.)
P-1975	Copper Alloy Locknut Nickel-Plated	7	5/16"	1/4"	1/16"	(1/4"-32 Thd.)
P-2060	Copper Alloy Locknut Nickel-Plated	7	11/32"	9/32"	1/16"	(9/32"-32 Thd.)
P-2417	Copper Alloy Decor Nut Satin Chrome	11	.730"	.344"	.171"	(15/32"-32 Thd.)
P-2437	Copper Alloy Decor Nut Brass Nickel-Plated	11	.740"	.344"	.181"	(15/32"-32 Thd.)
T-1064-1	Copper Alloy Hex-Shoulder Locknut Nickel-Plated	9	See Drawing			
T-1071-1	Copper Alloy Knurled Locknut Nickel-Plated	8	5/8"	15/32"	3/32"	(15/32"-32 Thd.)
T-2160	Copper Alloy Knurled Nut Nickel-Plated	8	13/32"	5/16"	1/16"	(5/16-32 Thd.)

CLAMPS

P-2380	Steel "U" Clamp	12	.335"	7/32"	.188"
P-2381	Steel "U" Clamp	12	.313"	7/32"	.188"

DIMENSIONS ARE FOR REFERENCE ONLY $\frac{\text{Inch}}{(\text{mm})}$

NOTE: Contact your Switchcraft Representative for price and delivery.

All products shown in this catalog are covered by Switchcraft's limited lifetime warranty

© Registered trademark of Switchcraft, Inc.

MOUNTING HARDWARE

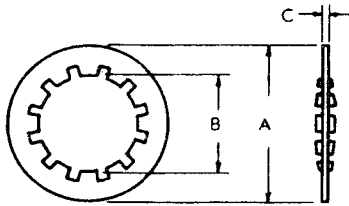


Figure 1



Figure 2

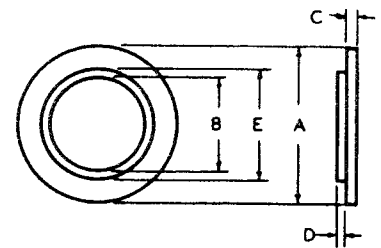


Figure 3

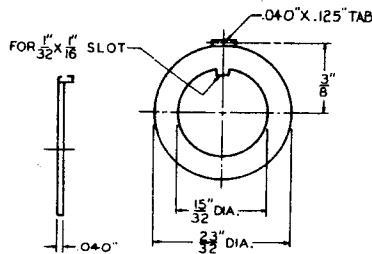


Figure 4

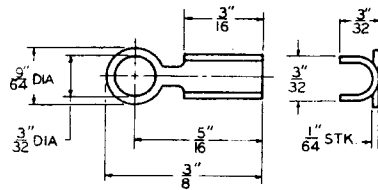


Figure 5

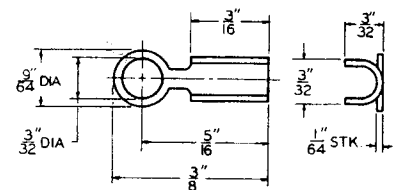


Figure 6

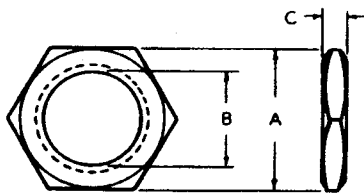


Figure 7

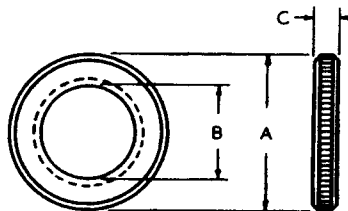


Figure 8

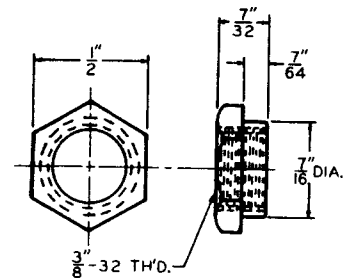


Figure 9

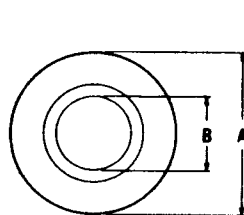


Figure 11

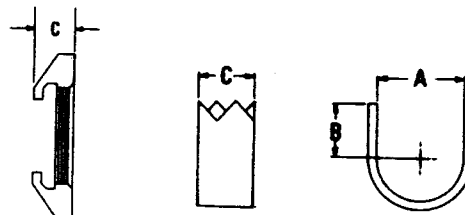


Figure 12

DIMENSIONS ARE FOR REFERENCE ONLY $\frac{\text{Inch}}{(\text{mm})}$

NOTE: Contact your Switchcraft Representative for price and delivery.

All products shown in this catalog are covered by Switchcraft's limited lifetime warranty

® Registered trademark of Switchcraft, Inc.

Mouser Electronics

Authorized Distributor

Click to View Pricing, Inventory, Delivery & Lifecycle Information:

Switchcraft:

[P1648](#) [P10149](#) [S-2957](#) [S-3997](#) [S3997](#)