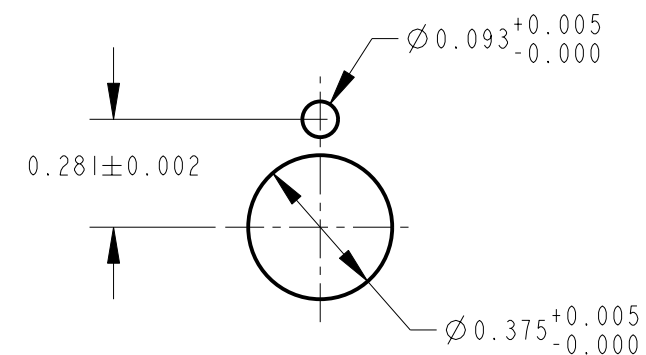
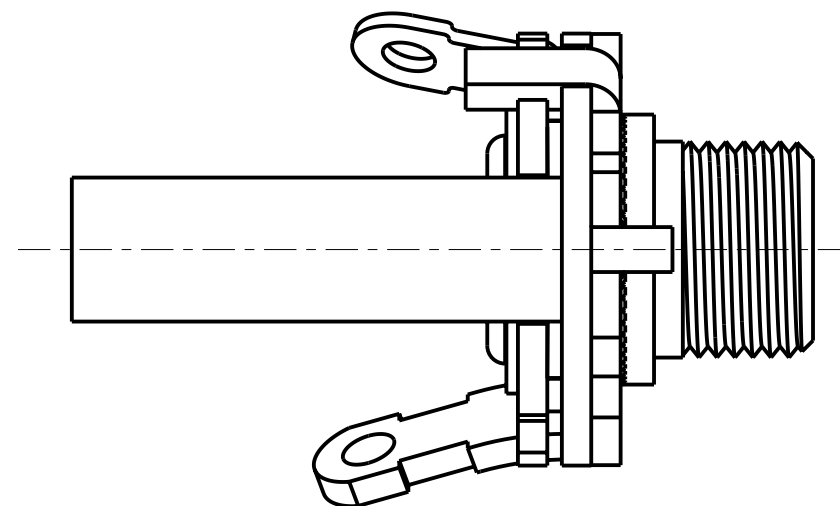
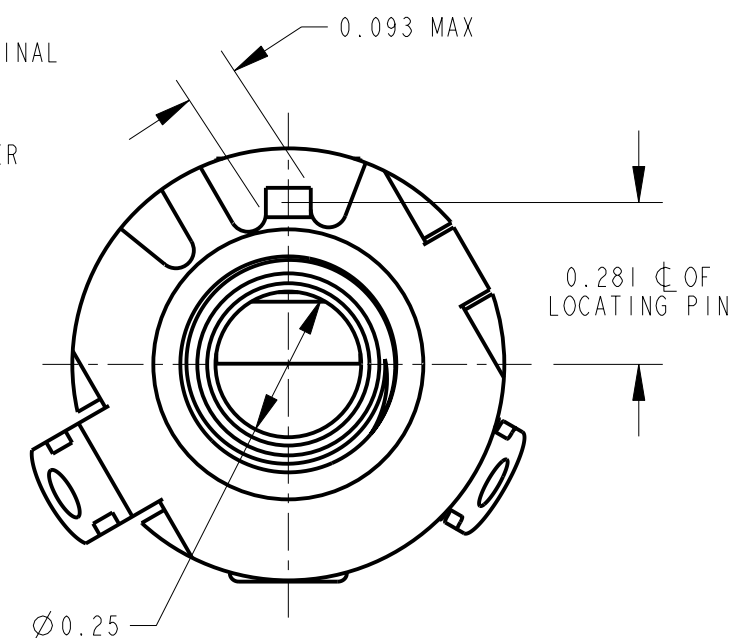
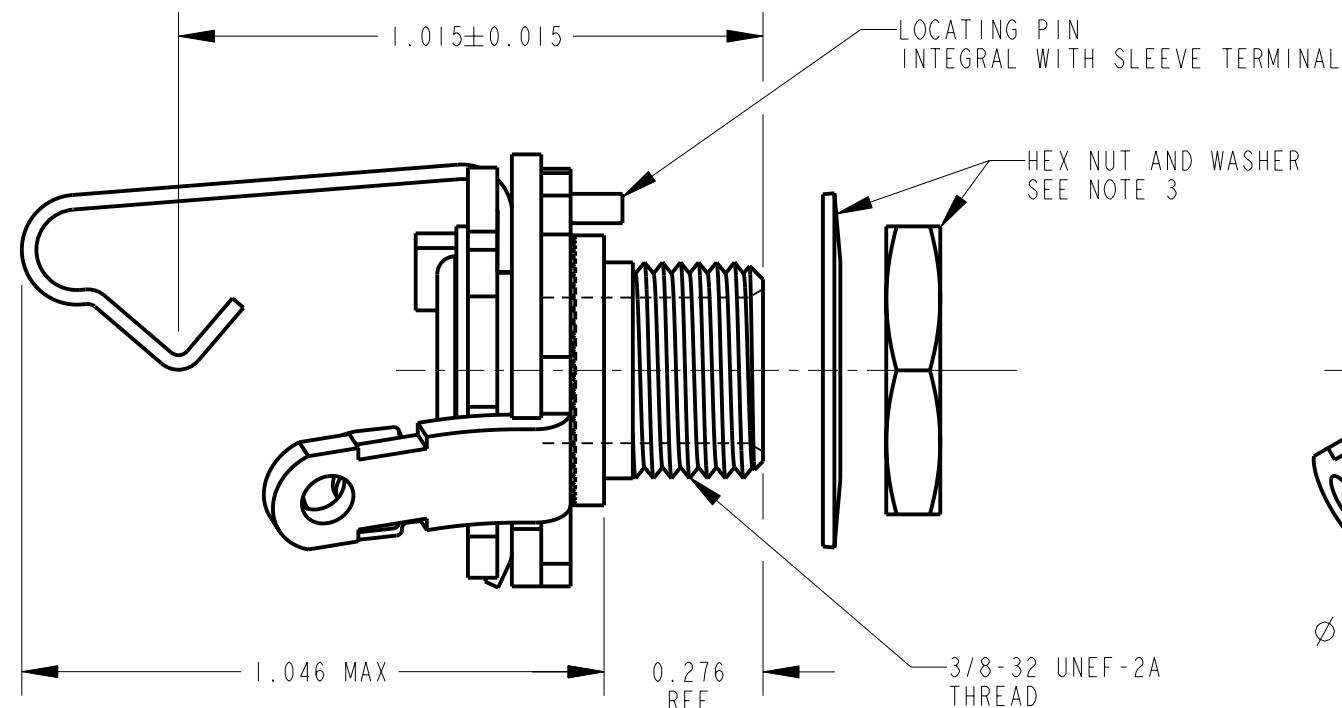
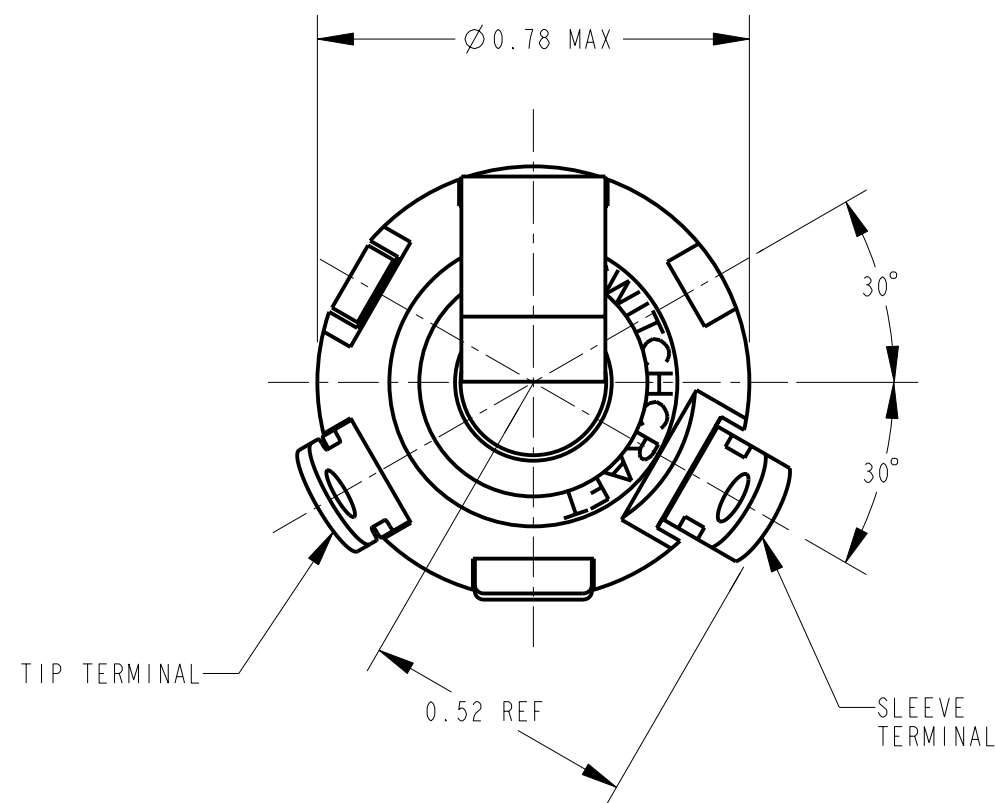


SCHEMATIC



MOUNTING DETAIL



NOTES:

1. ALL PARTS ARE MECHANICALLY INTERLOCKED.
2. MATERIALS:  
BUSHING - COPPER ALLOY, NICKEL PLATED  
SLEEVE TERMINAL - COPPER ALLOY, NICKEL PLATED  
TIP SPRINGS - SPECIAL COPPER ALLOY  
INSULATING WASHERS - PHENOLIC  
METAL WASHER - COPPER ALLOY, NICKEL PLATED  
HARDWARE - COPPER ALLOY, NICKEL PLATED  
TERMINALS ARE TIN DIPPED WITH LEAD FREE SOLDER
3. K180 HEX NUT AND K216 WASHER SHIPPED UNASSEMBLED.
4. THIS PRODUCT IS RoHS COMPLIANT.

CUSTOMER DRAWING

					★ STAR SYMBOL DENOTES CRITICAL DIMENSION	THIS DRAWING DESCRIBES A DESIGN CONSIDERED PROPRIETARY IN NATURE, DEVELOPED AND MANUFACTURED BY SWITCHCRAFT INC. AND IS RELEASED ON A CONFIDENTIAL BASIS FOR IDENTIFICATION PURPOSES ONLY.											
					UNLESS OTHERWISE SPECIFIED	SIZE		WIDTH		MULT		LBS/M		TEMPER			
					1. ALL DIMENSIONS IN INCHES -TWO PLACE DECIMALS ±0.01 -THREE PLACE DECIMALS ±0.005 -ANGLES ±1° -ALL DIA. CONCENTRIC WITHIN 0.005 T.I.R.	FINISH SPEC No.						MATERIAL SPEC No.					
					2. FEATURES ON THE SAME CENTERLINE MUST BE ALIGNED WITHIN ±0.002	FIRST USED ON				SCALE 3:1		<b>Switchcraft®</b>					
B	27023	9-14-12	TO	TJK	3. REMOVE ALL BURRS	DATE DRAWN		BY	CHKD	APVD							
A	25366	6-24-06	TO	TJK		29-Apr-13		TJK	TJK 4/29/13	TJK 4/29/13		SHEET   OF					
REV	ECO NUMBER	DATE	BY	APVD		NAME						PART No.		REV			
REVISIONS					DO NOT SCALE DRAWING	2 CONDUCTOR Ø0.25 LITTEL-JAX, RoHS						CIIX		B			

# Mouser Electronics

Authorized Distributor

Click to View Pricing, Inventory, Delivery & Lifecycle Information:

[Switchcraft:](#)

[C11](#)